



INSIDE OCTOBER 2011

2 Mitcham West Activity Centre



3 Domestic 'At Call' Hard Waste Collection

4 Community Calendar

5 Proposed Parking Changes at the Repatriation Hospital



6 Prepare for the Busfire Season

10 From Your Elected Members



12 Womad EARTH STATION

The revised Draft Brown Hill and Keswick Creeks Stormwater Management Plan, designed to mitigate severe flood risks and protect homes across the Cities of Burnside, Mitcham, Unley, West Torrens and part of the City of Adelaide has been released for community consultation.

Draft Brown Hill and Keswick Creeks Stormwater Management Plan



The revised Draft Stormwater Management Plan was prepared by consultants WorleyParsons with the support of the catchment Councils and the Stormwater Management Authority following concerns raised by the Mitcham Council about the 2006 Flood Management Master Plan.

The revised Draft Plan, released in September, includes key elements from the previous 2006 plan with a strong focus on alternative solutions in the upper Brown Hill Creek catchment upstream from Anzac Highway.

ALTERNATIVE OPTIONS FOR UPPER BROWN HILL CREEK

Alternative flood mitigation options have been investigated for Brown Hill Creek in the upper catchment area which identified nine viable options for further detailed consideration. These were:

- Flood control dam in the Brown Hill Creek Recreation Reserve;
- Flood control dam at Site 2 (rural part of the upper Brown Hill Creek catchment);
- Flood control dam at Site 2 plus weir system along Brown Hill Creek;
- Flood control dam at Site 2 plus overland flow interceptor at the Glenelg Tramway (including downstream channel upgrade);

- Flood control dam at Site 2 plus supplementary works to prevent channel overtopping;
- Overland flow interceptor at the Glenelg Tramway (including downstream channel upgrade);
- Overland flow interceptor at the Keswick Creek diversion (at Leader Street, proposed as part of the 2006 Master Plan);
- Small flood control dam at Site 1 (Brown Hill Creek Recreation Reserve) plus supplementary works to prevent channel overtopping;
- Complete channel upgrade between Anzac Highway and Muggs Hill Road in Mitcham.

Each option was assessed in terms of construction cost and how each option reduced the impact of a 1 in 100 year Average Recurrence Interval flood.

Each option, as part of the overall plan, provided a similar indicative benefit - cost ratio (typically between 0.7 and 0.8).

WHICH OPTION?

From the nine alternative solutions investigated, consultant WorleyParsons has recommended that the preferred mitigation option for upper Brown Hill Creek is the construction of a small (12m crest height) detention dam at Site 1 in the Brown Hill Recreation Reserve with a range of supplementary works in the lower Brown Hill Creek catchment aimed at preventing channel overtopping. The supplementary works include:

- A high flow bypass culvert from Malcolm Street in Millswood to the Glenelg Tramway in Forestville and,
- Upgrading of the Brown Hill Creek channel between Leah Street and Anzac Highway, Forestville.



Community Consultation

Consultants URPS have been engaged on behalf of the five catchment Councils to prepare and undertake an extensive community consultation process to ensure the community has sufficient time and opportunity to provide comment and feed back on the Draft Stormwater Management Plan.

The Draft Brown Hill and Keswick Creeks Stormwater Management Plan is available from:

- www.mitchamcouncil.sa.gov.au
- A free disc and a hard copy of the executive summary of the plan can be obtained from the City of Mitcham Civic Centre, 131 Belair Road, Torrens Park; the Mitcham and Blackwood Libraries; or by calling 8372 8888.

Community consultation on the Draft Plan will begin on October 31 for six weeks until December 12. The community is invited to discuss the Draft Plan and provide feedback. Times and locations for the community consultation process which will include three open days with one being held in Mitcham with the WorleyParsons consultant in attendance, will be confirmed soon and promoted through Councils' websites.

Members of the community, interested residents and groups that wish to express their view in regard to the Draft Plan are encouraged to register their interest through the City of Mitcham's Customer Service on 8372 8888.



first national
REAL ESTATE
James Partners

Massive \$25,000 Giveaway ...

We will be giving five lucky winners \$5,000 in hardware gift vouchers. Competition runs until 31st October 2011.

Jump on our website to enter: www.jamespartners.com.au

GOOD LUCK!

Lottery Lic.T11/1546. See www.firstnational.com.au/win for Terms & Conditions.



Blackwood Activity Centre

Council is moving closer to redeveloping the Blackwood Library on Main Road at Blackwood.

At a recent meeting Council endorsed the development of a Blackwood Library/Activity Centre on the existing library and adjacent nursery site on Main Road in Blackwood. The centre will comprise of a new library and flexible community space with an area ranging from 1,400m² to 2,188m².

The redevelopment provides the opportunity to expand the library

and develop community facilities to meet the growing needs of the hills community. Together the existing library and nursery site provide 5,000m² of land on a prominent ridge top location. The site has magnificent views of hills and valley to the east and highly visible 90 metre frontage to Main Road.

Council will consider options to enable it to consider how it might wish to proceed. This information

will include size, budget, mix of internal space, funding options and access as well as considering safety issues relating to Main Road for users of the Library/Activity Centre.

During the planning and design stage of the new centre, Council will explore the opportunity for the Blackwood Library/Activity Centre to incorporate a Natural Disaster Resilience Centre for the community of Blackwood.



Community Garden in Mitcham

Are you interested in having a community garden in Mitcham? Come along to a public meeting at 6 pm on Thursday 20 October at the City of Mitcham Mayor's Parlour, 131 Belair Road, Torrens Park.

Community gardens are run by a group of people who share space, skills, knowledge and a love of gardening to grow, harvest, cook and share food together, creating a community connection between food, plants and culture.

Council is keen to know your views on land that could be suitable for a community garden in Mitcham, and also get an indication of how

many residents would be willing to take ownership of the project and be prepared to make a commitment towards making it a reality.

Speakers with extensive experience in starting and running community gardens will be present to provide information on all aspects of community gardening, from the ground up!

Community Garden Public Meeting

Date: Thursday 20 October **Time:** 6 pm

Location: City of Mitcham Mayor's Parlour, 131 Belair Road, Torrens Park

For further information, or to register your interest in attending, contact Lyn Young on 8372 8899 or email lyoung@mitchamcouncil.sa.gov.au.

Mitcham West Community Centre

Council is exploring the possibility of developing a Mitcham West Community Centre at 135 – 139 Daws Road, St Marys.

Over the last three years Council has been investigating opportunities to develop a community centre in the western area of Mitcham.

Council has signed a contract to purchase the former school at 135 – 139 Daws Road, St Marys subject to planning consent for a change of use to a community centre.

Situated in a highly visible and accessible location on Daws Road the buildings provide an abundance of adaptable accommodation for community use. The property consists of two buildings; the larger building will be developed as a community centre while the smaller

building will be retained for other use (subject to planning approval).

While services to be provided from the Mitcham West Community Centre will continue to be discussed by Council, it is envisaged that it would include limited library services, computer hub with internet access, community meeting space, access for immunisation and health counselling opportunities, justice of peace services, Council based services such as payment of rates and registration of dogs and cats, and information and programs around youth and positive aged care.

Consultants, Urban and Regional Planning Services have been engaged to manage the development application and JPE Design is preparing a design to convert the former school into a community centre. The design will aim to present a welcoming presence to the community by opening up the site and improving visibility and providing additional carparks.

The planning application has been lodged and if the application is successful it is anticipated that the Mitcham West Community Centre would be ready for use in late 2012 or early 2013.

The Generator

Get along to 'The Generator' an all ages alcohol free music event featuring seven of the best local and Adelaide based bands on Saturday 5 November from 6 pm to 11 pm at the Waite Street Hall, Blackwood (next to Coles).

**Saturday 5 November
6 pm to 11 pm**

An all ages alcohol free youth band event
Waite Street Hall,
Blackwood (next to Coles)

Enjoy live music as well as community activities. Food and drinks will be available for purchase on the night.

Tickets are only \$10 and can be purchased on the night at the door or by visiting 'The Generator' Facebook page.

If you are a local band wanting to play at the event or a young person seeking to gain work experience in event management please contact Karen for an application form at karen@scorcherfest.com.au

'The Generator' is supported by the City of Mitcham, Scorcher Fest and Learning Music Australia.



Seniors Day

Every Wednesday
At all Wallis Cinemas

Complimentary tea/coffee, cake and biscuits for all sessions commencing before 2pm excluding school holidays.

Special Lunch Deals
before or after the movie...
Lunch and Movie Ticket only **\$18.40**

A surcharge will apply for Special Events and 3D films

WALLIS CINEMAS
There's nothing like the movies at Wallis

Mitcham Cinemas
Mitcham Square Shopping Centre, Level 1,
119 Belair Road, Torrens Park P: 8305 4444

www.wallis.com.au

CONTACTING COUNCIL

Mayor
Mayor Michael Picton
0417 812 546

Babbage Ward

Cr. Christopher Gellie
0417 080 133
Cr. David Munro
0403 161 462

Boorman Ward

Cr. Leanne Moriarty
8379 3797
Cr. Judith Weaver
8357 7522

Craigburn Ward

Cr. Nick Greer
0434 330 150
Cr. Elaine Grimm
8370 0025
Cr. Jane Silbereisen
0411 400 341

Gault Ward

Cr. Chris Adcock
0428 724 315
Cr. Stephen Fisher
0407 973 321

Overton Ward

Cr. Yvonne Poland
0416 773 973
Cr. John Sanderson
0402 517 945

The Park Ward

Cr. Colin Campbell
8278 7880
Cr. Mark Ward
0458 112 358

OCTOBER 2011 PUBLICATION DETAILS

Mitcham Community News is published bi-monthly by and for the City of Mitcham.

Editorial
Communications Department
City of Mitcham

Design + Production
Sarah Bennett

Regraphics + Printing
Lane Print

Paperstock

Printed on paper sourced from renewable plantation.

Distribution

Salmat Mediaforce and Australia Post
Delivered to 31,000 homes and businesses within the Mitcham Council area.

Advertising

KRL Media Services
Telephone: 8231 5433
PO Box 131 Unley, SA 5061

Contributing Articles

Community groups and organisations submitting items for the December 2011 issue of this publication should ensure they reach Communications Officer Julie Lamond no later than Friday 21 October 2011.
Telephone: 8372 8871 or email jlamond@mitchamcouncil.sa.gov.au
Good quality colour/high resolution colour photographs/image files can be submitted although publication will depend on space availability.

Audio Tapes

Mitcham Community News audio tapes are available at both Mitcham and Blackwood Libraries or by arrangement from the Community Information Service. Telephone: 8372 8812.

Council Civic Centre

Open weekdays 9 am to 5 pm
131 Belair Road, Torrens Park or
PO Box 21, Mitcham Shopping Centre, Torrens Park, South Australia 5062

Customer Service Centre

Telephone: 8372 8888

Community Information Service

Telephone: 8372 8812

Website

<http://www.mitachamcouncil.sa.gov.au>

The views and opinions expressed in articles and advertisements submitted by contributors, other than the City of Mitcham, do not necessarily reflect the views of the Council as a body, nor as individual members. While every effort has been made to ensure accuracy in published articles submitted by contributors other than Council, no responsibility is accepted for any errors that they may contain.

Every Generation

Celebrate the 'Every Generation - It's on for young and old Festival' during October 2011.

The City of Mitcham is celebrating the valuable contributions made by older Mitcham residents to our community through a series of programs and activities.



Afternoon Tea

Enjoy a lovely afternoon tea, served by library staff, at the libraries every Monday to Thursday in October.

Date: 2.15 pm to 2.45 pm

Location: Blackwood Library, 215 Main Road, Blackwood and Mitcham Library, 154 Belair Road, Hawthorn

Cost: Free

Keith Conlon

Meet Keith Conlon channel 9's Postcards presenter and 5AA Breakfast Radio announcer who will share his experience about life over 50 and enjoy a 'South Aussie' morning tea. Book vouchers to be won.

Date: Thursday 13 October

Time: 10.30 am

Location: Mitcham Cultural Village Princes Road, Mitcham

Cost: Free

Bookings essential call 8372 8244.

Care to Lunch

If you are over 50 come along and enjoy a lunch and as it is Carer's Week, someone special who cares for you is also invited.

Date: Monday 17 October

Time: 12 noon for 12.30 lunch

Location: Balyana Conference Centre, cnr Strathcona and O'Neil Street, Clapham

Cost: \$5 per person

To book call Karen on 8372 8887.

One Bohemian Night

Step inside and be entertained on 'One Bohemian Night' with circus performers, poetry and decadent desserts and coffee.

Mitcham Library Service is hosting 'Australian Poetry Slam Heat 3' at the Mitcham Library. Poets are encouraged to speak, shout, whisper or sing an original poem in front of an audience for the chance to win cash prizes and to represent their local library and possibly even their State in the national competition in Sydney. Supper provided.

For more information visit www.australianpoetryslam.com.au

Date: Tuesday 18 October

Time: 6.30 pm for a 7 pm start

Location: Mitcham Library, 154 Belair Road, Hawthorn

Bookings essential call 8372 8244.

Me N Me Mate

Come and enjoy an hour of Banjo Patterson's poetry in theatre entertaining Aussie ballads, song and yarns presented by Splash Theatre Company.

Date: Thursday 20 October

Time: 9.45 am followed by morning tea at 11 am

Location: Mitcham Cultural Village, Princes Road, Mitcham

Cost: \$2

Bookings essential call 8372 8887.

National Velvet

Enjoy a movie morning with an old favourite, the original National Velvet starring Elizabeth Taylor at the Mitcham Wallis Cinema.

Date: Tuesday 25 October

Time: 10 am for a morning tea. Movie at 10.45 am

Location: Mitcham Wallis Cinema, Mitcham Square, Torrens Park

Cost: \$5

Bookings essential call 8372 8887.



Matthew Abraham and David Bevan

Matthew Abraham and David Bevan ABC 891 breakfast radio announcers will speak about life over 50. Book vouchers to be won. Light refreshments.

Date: Wednesday 26 October

Time: 12 noon

Location: Mitcham Library, 154 Belair Road, Hawthorn

Cost: Free

Bookings essential call 8372 8244.

Playing Away and Playing at Home

John Ovenden, a highly regarded ABC TV and BBC world service newsreader and journalist, has written two short plays. A rehearsed play reading featuring John Ovenden, Gayle Hammond, Kate O'Reilly and Wayne Anthony. Soup and slices for tea.

Date: Thursday 27 October

Time: 6.30 pm

Location: Blackwood Library, 215 Main Road, Blackwood

Cost: Free

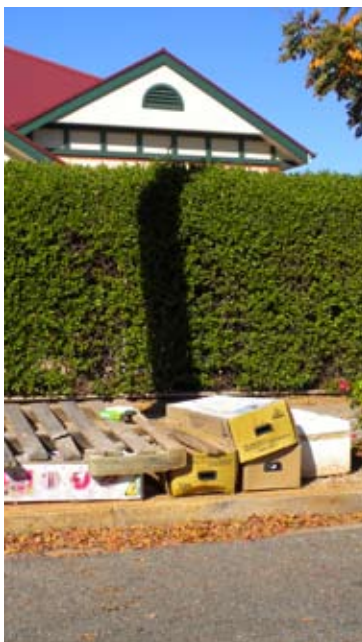
Bookings essential call 8372 8255.

Domestic 'At Call' Hard Waste Collection

Council's Domestic 'At Call' Waste Collection began in September with a 10 month trial.

The City of Mitcham is offering one pre-booked hard waste collection service for all domestic households in the Mitcham Council area during 2011/2012. There is no direct cost to residents.

The Domestic 'At Call' Hard Waste Collection Service is being conducted on behalf of the City of Mitcham by Solo Resource Recovery.



Free Green Waste Disposal

To help Mitcham residents to clear their properties, reduce fuel loads and remove fire hazards, Council will open the Lynton Green Waste Depot (Beagle Terrace) for FREE dumping of green waste on:

October

Monday 24 and 31

Saturday 22 and 29

November

Monday 7, 14, 21 and 28

Saturday 5, 12, 19 and 26

December

Monday 5 and 12

Saturday 3 and 10

This facility will be FREE with only GREEN WASTE ACCEPTED - NO RUBBISH, and proof of residency will be required.

Green waste materials can consist of grass cuttings, leaf matter and prunings (branches no larger than 200mm (8inches) in diameter).

For information and advice on the safe removal of hazardous material contact Zero Waste on 8204 1947.

For e-waste disposal visit: E-Cycle Recovery www.ecyclerecovery.com.au; Australian Computer Society (SA) www.acs.org.au/sa; or Planet Ark www.recyclingnearyou.com.au

For further information please contact the City of Mitcham's Customer Service Centre on 8372 8888. For collection enquiries and bookings call 8295 5077 or visit www.mitchamcouncil.sa.gov.au.



To arrange a collection it's as easy as 1, 2, 3...

1

Book First

Please book first before placing your hard waste out for collection either by phoning 8295 5077, by visiting Council's Customer Service Centre or online at www.mitchamcouncil.sa.gov.au. Pickup will be within four weeks of booking the service, with residents advised in writing two weeks prior to their pick up date.

2

Sort Your Waste

Items accepted for collection

- Furniture.
- Mattresses.
- Refrigerators and freezers (for safety reasons - please remove doors).
- White goods.
- Floor coverings (up to 1.5 metre lengths).
- Sheets of iron and guttering (up to 1.5 metre lengths).
- Timber off cuts (up to 1.5 metre lengths).
- Dismantled clothes lines.
- Blinds and window coverings.
- Bikes and toys.
- Air conditioners.
- Small items of scrap metal.
- Hot water services.
- Lawn mowers.
- Tree and shrub prunings cut into two metre lengths and tied in bundles (max of 30 cm diameter).
- Rainwater tanks (segments no larger than (up to 1.5 metre lengths).

How much can I put out?

A maximum of two cubic metres will be collected from each household. This equates to a 6 x 4 trailer filled to water level.

Items not accepted for collection

- No bricks, rocks, dirt, pavers, concrete and building materials.
- No wooden pallets.
- No electronic waste (TV's, computers, printers, phones DVD and VCR players, stereos, iPods etc).
- No motor vehicle tyres.
- No items too heavy for two people to lift (e.g. water softeners).
- No batteries.
- No paints.
- No ammunition, explosives or flares.
- No asbestos.
- No fire extinguishers.
- No motor oil.
- No gas bottles.
- No liquids.
- No chemicals.
- No panels of sheet glass.
- No car parts - e.g. gear boxes, engine blocks and panels.
- No business or industrial waste.

3

Place Your Waste out for Collection

Place accepted waste items out in a neat pile 24 hours before it is due for collection.

Remember it is your responsibility to ensure that the hard waste outside your property is placed and maintained safely until collected - even if it is moved by other people.

- **Put your waste out** 24 hours before it is due for collection - no sooner but no later than 7 am on the collection day. Residents will be asked to remove their material if placed out earlier than their scheduled collection.

- **Leave plenty of room** on the footpath for people to walk past and keep items tidy and secure on the nature strip, not on the footpath or the roadway.
- **Don't leave anything sharp** or hazardous on the footpath.
- Remove all doors from fridges and freezers.
- **Don't stack** your waste too high.
- **Lay taller items down** (e.g. wardrobes).
- **Break larger items up if possible.**

All items to be collected are to be placed on the kerbside no earlier than the day before your collection and no later than 7 am the day of your collection.

Remember - littering is an offence and expiations may be issued under Council's by-laws for littering should materials be placed on the nature strip prior to 24 hours before your collection.



Meet the team at Cornes Toyota

The friendly staff at Cornes Toyota Hawthorn, are dedicated to providing you with efficient and informative service.

Whatever your Toyota needs, from New, Used or Fleet Sales, to Finance and Servicing, come in and see us.

Cornes Toyota

46 Belair Road, Hawthorn PH: 8272 1488
www.cornestoyota.com.au

Mitcham Community Calendar

COMMUNITY GROUPS

WESTBOURNE PARK COMMUNITY CLUB

Come and join the fun at the **Westbourne Park Community Club** at 390 Goodwood Road, Cumberland Park. Enjoy social indoor bowls every **Monday and Saturday** and social bingo each Monday at 1 pm. Call 8271 3290.

HAWTHORN CHURCH OF CHRIST

Come and enjoy craft, laughter, friendship and a cuppa every **Thursday** during school term from **9.30 am to 11.30 am** at 42 Angas Road, Hawthorn. Call 8272 5564.

SOUTH OZ SCROLLERS

South Oz Scrollers have a new home in the Community Shed at the Mitcham Cultural Village. Workshop meetings are held on the **third Saturday and fourth Tuesday** of the month from **10 am to 3 pm**. Visitors are welcome. Call 8298 1949. The club owns some scroll saws so that you can 'try before you buy'. Visit www.woodgroupsa.org.au/sozscroll.

MITCHAM KIWANIS

Mitcham Kiwanis need members to participate in volunteer work to support the local community and international projects. The group meets on the **second and fourth Monday** of each month at Marion Sports Centre, Sturt Road, Marion. Call 8374 3694.

GET FIT/SOCIAL ACTIVITIES

TAI CHI

The slow rhythmic movement of Tai Chi is easy to learn and promotes a feeling of tranquillity and general fitness. Come along and try at the **Mitcham Cultural Village, Princes Road, Mitcham**. Call 8277 8605.

THE HILLS CHORAL SOCIETY

The Hill Choral Society, a community based Choir, welcomes new members or join the mailing list to receive concert news. Email jwa82602@bigpond.net.au or call 0407 722 041.

PASADENA SPORTS CENTRE

Social Basketball including Sunday mixed, Tuesday Women's, Monday, Tuesday, Wednesday and Thursday Men's. After school competition, **'Miniball'** for 2 to 7 year olds and **Junior Domestic Basketball** on Saturdays for 5 to 13 years. Visit www.pasadena.basketball.net.au or call 8374 4818.

ALL SAINTS ANGLICAN CHURCH

At **Bedford Square, Colonel Light Gardens** invites you to **families@five**, at 5 pm on the first Sunday each month. **Sunday Eucharist**, 9 am each week.

Wednesday Eucharist 10.30 am
Call 0401 671 850 or visit www.allsaintsandfrancis.com.

COMMUNITY EVENTS

MITCHAM HISTORICAL SOCIETY INC

Enjoy a **tour of Port Willunga, Aldinga and Willunga** on **Sunday 16 October at 9 am**. Cost \$65 members \$75 non-members. Call 0418 829 034.

STRAWBERRY FAIR

Sunday 6 November from 10 am to 3 pm at **Edwardstown Primary School**. Enjoy a variety of stalls including cakes, craft, strawberries and ice cream, white elephant, books, clothing and much more. Follow the Strawberry Trail to the BBQ and other great food.

MITCHAM ORCHESTRA

Presents Showtunes Special on **Sunday October 16 at 2 pm** at the Colonel Light Gardens Uniting Church. Admission \$15 at the door includes afternoon tea. Call 8431 0452.

EXPLORE CORO FESTIVAL

Explore the valley and learn about nature, the environment, science while enjoying an afternoon full of adventure challenges on **Sunday 23 October from noon** at the **Coromandel Community Centre and Oval on Main Road, Coromandel Valley**. Free family entertainment. Call 8370 6880 or visit www.coromandelcc.org.au

THE BLACKWOOD PLAYERS

Join Luke Streetwalker and Princess Lei on their journey into an unlikely galaxy where outrageous characters lie in wait, ready to inflict humour and aching ribs on the unsuspecting audience each **Friday and Saturday night at 8 pm** from **11 until 26 November** at Blackwood 21, 21 Coromandel Parade, Blackwood. Visit www.blackwoodplayers.org.au or call 1300 658 522.

MITCHAM SCHOOLS FETE

Come along on **Sunday November 6** to the Mitcham Schools Fete from **11 am to 6 pm**. Enjoy rides, amusements, a silent auction with a chance to bid on prizes including a home theatre and use of a corporate box at AAMI Stadium.

EVERY GENERATION CONCERT

A free community celebration with musicians soloists, multimedia poetry, story and community singing followed by delicious afternoon tea on **Wednesday 26 October** from **1.30 pm to 3.30 pm** at Blackwood Hills Baptist Church, 72 Coromandel Parade, Blackwood. Call 8370 0333.

ST THERESE CHURCH

St Therese Church's youth coordinator works within the parish community. If you would like to get involved email Kathryn at kathrynpettersen@hotmail.com or come along to the **Children's Mass** on the fourth Saturday of the month or the **Youth Mass** on the first Saturday of the month.

MEN'S BREAKFAST

Enjoy a **continental breakfast** followed by a presentation from George "Exodus 3V8" Lubega at the Blackwood Hills Baptist Church on **Saturday 19 November at 7.30 am**. Cost \$8 or \$5 concession. Email jodiemick@adam.com.au or call 0403 656 537.

CRAFTART DESIGNER MARKET

Gallery One is holding a CraftART Designer Market at the Mitcham Cultural Village, Princes Road, Mitcham on **Sunday 23 October from 11 am to 4 pm**. Packed with exciting art and craft for sale. Enjoy hot food and designer items for sale.

MITCHAM CULTURAL VILLAGE

Seniors in Harmony on the **first Tuesday** of every month at 103 Princes Road, Mitcham for a free concert followed by complimentary afternoon tea from **1.30 pm to 3.30 pm**. Next events are **Tuesday 8 November** starring Jack Vaas with a Melbourne Cup Theme and **Tuesday December 6** enjoy a Christmas Theme.



What's on at the Blackwood Recreation Centre?

The Blackwood Recreation Centre located at 1 Northcote Road, Eden Hills has activities for everyone!

Monday

Fitness Studio
Strength and Tone
Strength for Life
Netball
4 Year Old Gym
Junior Basketball
Gymnastics

Tuesday

Fitness Studio
Pilates
Yoga
Strength for Life
General Fitness Class
Kindergym
Martial Arts
Boxercise
Junior Basketball
Indoor Soccer
Gymnastics
Badminton

Wednesday

Fitness Studio
Strength for Life
Pilates
Strength and Tone Class
Kindergym
Yoga
Junior Basketball
Volleyball
Netball
Gymnastics
Trampoline

Thursday

Fitness Studio
Strength for Life
Pilates
General Fitness Class
Kindergym

Junior Basketball
Senior Basketball
Gymnastics
Trampoline

Friday

Fitness Studio
Strength for Life
Kinder Kids
Senior Basketball
Junior Basketball
In-Line Hockey
Trampoline

Saturday

Fitness Studio
Pilates
Combo Class
Kindergym
Fun Gym Kids Party
Junior In-Line Hockey
Public Skating
Skating Kids Party
Trampoline

Sunday

Fitness Studio
Senior In-Line Hockey
Gymnastics
Public Skating
Skating Kids Party

Latest News

New Seasons for Basketball, Netball, Soccer and Volleyball started in October.

Have a Go Fitness, come and try before you buy and purchase a \$75 for 10 visit pass.

Crèche available Monday, Tuesday, Thursday and Friday 9 am to 12 noon.

Call 8278 8833 for more information about the Blackwood Recreation Centre's exciting programs for all.

Blackwood Art and Photograph Show Continues to Support Community

Over \$13,000 was raised from the Art and Photographic Show to support the Rotary Club of Blackwood's valuable local and international community work.

The 28th Art and Photographic Show at Blackwood High School displayed over 500 paintings and photographs.

If you would like to get involved with the Rotary Club of Blackwood or support a project call 0429 155 743.



Prize Winners: Art

First prize Meaghan Coles for 'Snap Shot'
Second prize Pamela Dulson for 'Searchings'
Third prize Gary Lee-Gaston for 'Squall, Clarendon'
Fourth prize Colin Hannaford for 'Lemons'

Prize Winners: Photography

First prize Henk deWeerd for 'Bow to Bow'
Second prize Elana Bailey for 'Wang Wang the Panda'

Above: Mayor Michael Picton and Rotary Club of Blackwood President Peter Geer opening the Blackwood Art and Photograph Show.

Upcoming Work in Your Street

Stormwater Drainage Construction

Stage two of the **Belair Road Stormwater Drainage Project** is progressing with alterations to other major services within Belair Road now complete. A new stormwater drainage system will begin construction in October on the western side of Belair Road between the Mitcham Railway Station car park and Wattlebury Avenue. The project, which will reduce the flooding risk in Belair Road, includes two stormwater drainage systems across Belair Road into Ayr Avenue and Fife Avenue.

Bridge Construction

Restoration works on the State Heritage registered **Keystone Bridge and overflow culvert**, located on Taylors Road in Mitcham Reserve has been completed. Lighting to illuminate the bridge is currently being upgraded.

Kerbing Construction

Kerb and watertable replacement works in preparation for resurfacing works in **Prince George Parade, Colonel Light Gardens; Caulfield Avenue, Clarence Gardens; and Glenburnie Avenue, Ford Avenue, Chalk Place and Eli Street, Torrens Park** is complete.

Construction to replace the kerb, watertable and pavement in **Pearson Street, Clarence Gardens** has begun.

Road Works

Council's road rehabilitation and overlay works have been completed in:

- **Frontenac Avenue**, Panorama.
- **Murray Street**, Clapham.
- **Price Avenue**, Lower Mitcham.
- **Quinlan Avenue**, Pasadena.
- **Strathcona Avenue**, Clapham.
- **The Boulevard**, Bellevue Heights.
- **Warren Avenue**, Panorama.
- **Warren Crescent**, Panorama.

Council's road rehabilitation and overlay works will begin in:

- **Caulfield Avenue**, Clarence Gardens.
- **Glenburnie Avenue**, Torrens Park.
- **Ford Avenue**, Torrens Park.
- **Eli Street**, Torrens Park.
- **Chalk Place**, Torrens Park.

Traffic Management

Road safety projects are in progress or have been completed at:

- **Princes Road/North Parade/ Mitcham Square Shopping Complex**. Council has begun



State Heritage registered Keystone Bridge on Taylors Road in Mitcham Reserve

community consultation to change the traffic flows through the North Parade, Princes Road, Mitcham Square shopping complex intersection. Council will begin constructing a continuous footpath at the entrance to Mitcham Square to improve pedestrian safety. Council apologises for any inconvenience and will endeavour to complete this project with minimal disruption to access into the centre.

- **Princes Road, Mitcham**. Concept design and community consultation for pedestrian safety facilities located along Princes Road and Park Street was undertaken in April. This project has been included in the traffic management works program for 2011/2012.
- **Ormond Avenue, Daw Park**. Council will develop a traffic management strategy with residents for Ormond Avenue during 2011/2012.

Footpath Construction

Paving works recently completed:

Crozier Avenue, Goodwood Road to Winston Avenue, Daw Park (south).

Hay Street, Mitcham Avenue to Catherine Street, Lower Mitcham (north).

Winston Avenue, Morgan Avenue to Daws Road, Daw Park (east).

Yulinda Terrace, The Grove to Wattlebury Road, Lower Mitcham (west).

Belmont Street, Grange Road to Wattlebury Avenue, Lower Mitcham (east).

Paving Works in Progress

Kent Street, Cross Road to Devonshire Street, Hawthorn (west).

Claire Street, Fraser Street to Belmont Street, Lower Mitcham (north).

Coolidge Avenue, Belmont Street to Wattle Avenue, Lower Mitcham (south).

North Parade, Princes Road to East Parade, Kingswood (north).

Rozells Avenue, Winston Avenue to Light Place, Colonel Light Gardens (south).

Paving works programmed for October/November

Lochwinnoch Road, Fife Avenue to Barrelder Avenue, Torrens Park (west).

Barrelder Road, Carruth Road to Lochwinnoch Road, Torrens Park (north).

Heathfield Road, Highland Drive to Ridgehaven Drive, Bellevue Heights (south).

Ridgehaven Drive, Highland Drive to Heathfield Road, Bellevue Heights (north).

Minnow Reserve, Minnow Drive to Bridge, Glenalta.

Sherwood Reserve, bridge to Sherwood Drive, Glenalta.

Caulfield Avenue, South Road to Lee Street, Clarence Gardens (south).

Shepherds Hill Road, Donnybrook Road to Sturt Road, Bellevue Heights (south).

Shepherds Hill Road, Sturt Road Bridge to Sturt Road connector, Bedford Park (west).

Sturt Road, Shepherds Hill Road to University Drive, Bedford Park (south).

Gloucester Avenue, Caroline Avenue to Christine Avenue, Belair (north).

Gloucester Avenue, Kalyra Road to Caroline Avenue, Belair (north).

Suffolk Road, Suffolk Reserve to Myrtle Road, Hawthorndene (north).

Truro Avenue, Smith Dorrien Street to East Parade, Kingswood (south).

Rugby Street, Seafield Avenue to Eynesbury Avenue, Kingswood (west).

Coromandel Parade, Plymouth Avenue to Boronia Avenue, Coromandel Valley (east).

Further information about the 2011/2012 Infrastructure Program is available by visiting www.mitcamcouncil.sa.gov.au/goto/budget

Proposed Parking Changes at the Repatriation Hospital

Concerns have been raised about the impact of parking changes at the Repatriation Hospital on local streets.

Council has met with the Department of Health to request further information on the possible impacts that proposed parking changes at the Repatriation Hospital may have on local streets, the local community and hospital users.

The Government's proposal to change parking at the Repatriation Hospital may impact on the existing amenity and traffic flows in and through the area as well as on the local community in particular the

streets north of Daws Road and west of Goodwood Road.

Council has begun site assessments to evaluate local street car parking capacity, impact on amenity and implications for pedestrian safety. Council has also formally requested the Department of Health prepare a Traffic Impact Statement detailing their plans to address the possible transfer of parking from the Repatriation General Hospital site to local streets.

Council will monitor changes in parking behaviour when parking changes at the Hospital are introduced. Once parking data and the formal Traffic Impact Statement are available, Council will consult with the community on possible parking restrictions to ensure safe access through local streets and to private properties whilst balancing the need of hospital patrons to park safely.

**realise
your
dreams**

**ADULT ENTRY COURSE
INFORMATION SESSION**

Thinking about studying in 2012? Come along to our adult entry course information session to find out about our wide range of undergraduate courses, entry pathways to Flinders and how we can help you realise your dreams.

When: Tuesday, 25 October 2011
Time: 5:30pm - 7:30pm
Where: Flinders University, Bedford Park

**For details and to register:
www.flinders.edu.au/events**

**Admissions/Prospective Students Office
1300 657 671
admissions@flinders.edu.au**

**Flinders
UNIVERSITY**
inspiring achievement

CRICOS NO. 00114A

Prepare for the Bushfire Season

Have an 'Annual Clean-Up Program' and complete the task before the Fire Danger Season begins. Then maintain that standard throughout the Fire Danger Season.

Free Dumping

To help Mitcham residents to clear their properties, reduce fuel loads and remove fire hazards, Council will open the Lynton Green Waste Depot (Beagle Terrace) for FREE dumping of green waste on:

October

Monday 24 and 31
Saturday 22 and 29

November

Monday 7, 14, 21 and 28
Saturday 5, 12, 19 and 26

December

Monday 5 and 12
Saturday 3 and 10

This facility will be FREE with only GREEN WASTE ACCEPTED – NO RUBBISH, and proof of residency will be required.

Green waste materials can consist of grass cuttings, leaf matter and prunings (branches no larger than 200mm (8inches) in diameter).

Fuel Reduction

Whether you plan to stay or go early on the day or the night before, you must prepare your home and property as if you were staying. As you may have no choice but to stay and defend your house and family as there may be no way out.

Maintain fuel reduction practices throughout summer as good fuel reduction is essential. Move bark, heavy mulch, woodpiles and other flammable materials away from the home and other buildings.

Remove dead branches, fallen leaves and undergrowth, prune lower tree limbs and cut long grass within 20 metres of a residential dwelling. Greater ground clearance is desirable on slopes, especially under established trees.

A fuel-reduced zone of 30 metres to 40 metres is recommended on steep slopes.

The intensity of grassfires increases with the height and quantity of the grass. If it cannot be kept short by grazing animals, grass should be slashed well before the Fire Danger Season to allow time for the debris to rot.

On properties over half a hectare, prepare and maintain a five metre fuel break around fence lines, buildings, equipment sheds, haystacks, hay sheds and fuel supplies.

Property and Home

Many factors influence the risk of losing life and property during bushfires including the:

- Location and accessibility of your property.
- Amount and type of vegetation.
- Condition and placement of buildings.
- Availability of water.
- Physical capabilities of your family.

Long-term preparation may include changing the layout of your property. Strategically placed



garden walls, driveways, trees, shrubs and outbuildings can protect your home from radiant heat, significantly increasing the prospect of its survival.

Clean-up now for summer safety and remove all flammable materials from around the house. Walk around your home and identify potential spots where fire may start.

This is one of the most important preparations you can make.

It is essential to prepare your home to withstand a bushfire. If you ignore the need for fuel reduction prior to and during the Fire Danger Season, you may endanger both your own property and the lives and property of your neighbours.

Why do Houses Burn?

Many houses survive the fire front only to be destroyed later by fires started from burning debris.

Strong winds can break glass or damage roofs allowing flying embers to get inside the house.

In a bushfire a house can burn because of:

- Burning debris landing on or around the house.
- Radiant heat from the approaching fire.
- Direct flame contact.

When Clearing Properties

Consideration must be given to proper land management principles and in accordance with the *Native Vegetation Act*.

Clean Up

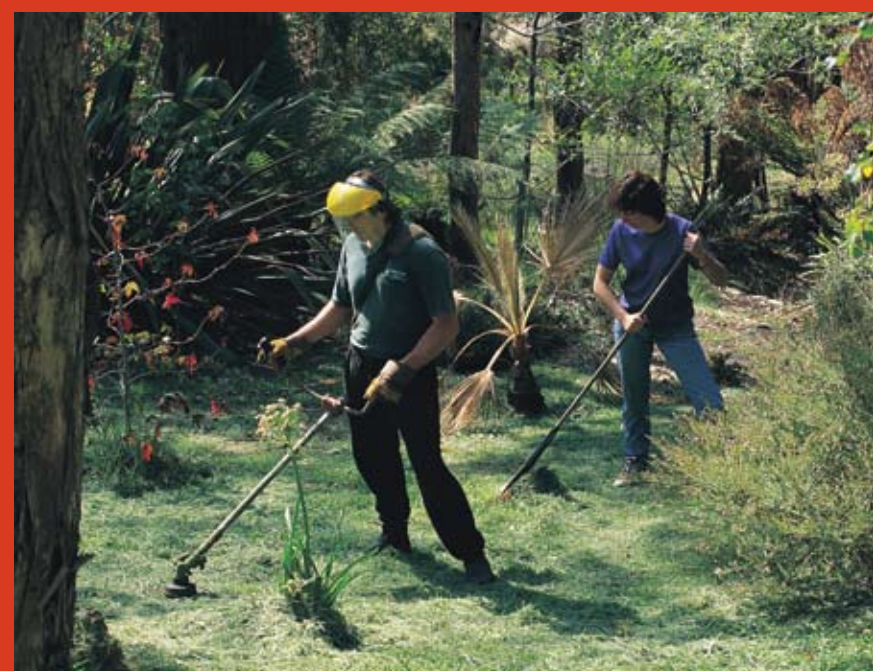
Fires are spread and fuelled by flammable grasses, weeds and bushes, remember to:

- Cut grass and clear away all fallen leaves and dead undergrowth within 20 metres of the house.
- Clear all dry grass, bark and mulch well away from any buildings.
- Provide space between trees and shrubs to prevent a continuous canopy or line of vegetation from the bush or grass land to the house.
- Prune lower branches to provide a vertical fuel break to prevent ground fire spreading into the trees.
- To protect buildings, keep gutters clear of leaves and twigs, and screen with metal gutter-guards.
- Establish a fuel-reduced zone between flammable hazards and the home to reduce the danger from radiant heat.



Reduce the fuel and the bushfire threat is reduced

The greater the fuel load = The greater the fire intensity





Plan to Survive

Make your decision now –
We are staying. We are going.

Even if you plan to go prepare your house and property to stay. If your decision is left until the last moment you may have no choice but to stay and defend.

Spark Proofing

Survival of the house can depend on stopping sparks and burning material entering through windows, under doors, roofs and floorboards.

Protect your home by:

- Fitting metal fly wire mesh or solid screens to spark proof windows, doors, ventilators and skylights.
- Boxing in or screening eaves and under floor areas.
- Sealing gaps in the roof area along ridge capping and fascia boards.
- Removing all plastic, straw or flammable awnings and pergola coverings.
- Removing any flammable materials lying near or under the house.

Air Conditioners and Skylights

To block sparks and smoke from entering your house, turn off evaporative air conditioners. Plastic skylights may melt and glass ones can break in heat and flames. Install wire meshed glass or thermoplastic covers to skylights.

Property Access

Clear access will allow for the safe movement of fire fighting vehicles. Gateways should be

at least three metres wide. Roadways need a well-compacted surface with slopes no greater than one metre rise for every four metres, with solid crossings over permanent waterways. Turn areas of 25 metres in diameter are necessary.

Planning to Go

If you are planning to go your decision needs to be made NOW well before the Fire Danger Season. Consider these points in your plan:

- At what point will you actually leave?
- Where will you go?
- How will you travel and what will you take?
- What if family members get separated?
- What will you do with your pets?

If Family Members Get Separated

Consider what you will do if a bushfire comes while your children are at school or family members are at work. Find out the school's policy on bushfires. Do not allow panic to drive anyone into life threatening conditions searching for missing relatives or pets.

When to Leave

It may be appropriate to go to your chosen refuge on any day the bushfire danger is extremely high.

Do not wait until a bushfire threatens, monitor the radio and leave well before the fire front arrives. **Never wait until the last moment and follow your Bushfire Plan.**

Where to Go

Investigate if there is a designated community refuge nearby and what you will need to take. Alternatively, you may be able to shelter with family or friends in a nearby suburb or even in a well-prepared neighbour's home. Decide in advance where you will go and ensure that it is a safe area.



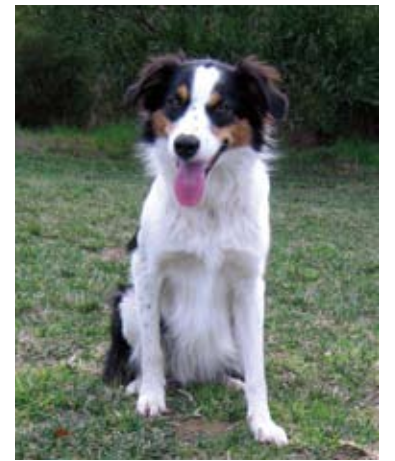
How to Travel

Travel by car if possible and if travelling with neighbours, organise it well in advance. Plan the route to your refuge and determine alternatives in case fire blocks the preferred option.

Your Pets

Ensure your dogs and cats are identified and registered to increase the chance of being reunited if you become separated.

Ideally, get your animals used to travel when young. Take them on regular car journeys so they are comfortable travelling and don't get carsick. Restrain or confine pets in the vehicle, as they may be frightened and panic in a fire.



Water Supply

Mains water cannot be relied on during bushfires as power could be cut or water pressure dramatically reduced.

If you have water tanks, dams or a swimming pool, a portable pump and a hose will be required to provide water reserves for the CFS.

Gravity fed water tanks with wide opening outlets enable quick filling of buckets plus the use of portable pumps.

To use your pumping equipment fit gate valves to all new tanks. Ideally your water supply should be close to the house and there should not be exposed areas of plastic pipe or hose to melt.

It Is Your Responsibility

Bushfire prevention is a year round responsibility. It is far more than a weekend clean-up just prior to the bushfire season.

Property owners who neglect their responsibility by not completing the necessary fire prevention hazard reduction work prior to the start of the Fire Danger Season may be issued with a \$315 expiation notice (Section 105F Notice under the Fire and Emergency Services Act 2005).

The necessary work will then be completed by Council's contractors with all costs borne by the property owner.



Bushfire Prevention is a Legal Requirement

This information is issued in your best interest by:




For information and advice on protecting your property from bushfire, call Mitcham Bushfire Prevention Officer John Zybek on 8372 8894.

CFS Protection

CFS cannot guarantee the presence of a fire fighting vehicle and crew to protect every home in a major bushfire.

It is therefore extremely important to plan for your family's safety and be self-reliant. Bushfires threaten life and property throughout our state every summer.

Making the right decision about whether to stay or go is critical for your own safety and that of your family.

Backyard Burning

Backyard burning of rubbish or green waste material is banned throughout the City of Mitcham all year round.

A fire is permitted for the purpose of comfort or cooking outside the Fire Danger Season provided:

- It is no larger than one metre square.
- There is a four metre clearance of flammable materials.
- There is an adequate extinguishing agent.
- A responsible person attends the fire at all times.
- The burning does not interfere with neighbours.
- The fire is completely extinguished when finished.

How Does Council Prepare for the Bushfire Season?

The City of Mitcham continues to reduce fuel loads before and during the Fire Danger Season throughout the hills by a combination of cutting out vegetation, burning of debris on-site and extensive brush cutting. Council has a number of fire management plans with extensive fuel break and fire track recommendations which Council is implementing.

Fuel Breaks

The City of Mitcham has approximately 500 hectares of bushland and road reserves in the Mitcham Hills and maintains a fire track network of over 15 kilometres in length.

Council is constructing and maintaining 'vegetated fuel breaks' and fire tracks at a cost of approximately \$350,000 each year (on-ground works) on reserves in the Mitcham Hills including Ashby Reserve, Randell Park and Sleeps Hill Quarry Reserve. A regular maintenance program involves:

- Controlling weeds.
- Pruning large trees (remove low hanging foliage).
- Thinning-out native vegetation (with government approval).

- Extensive brush cutting.
 - Prescribed burning.
- Fuel breaks still retain vegetation and large trees to reduce soil erosion and reduce weed invasion. Council has started brush cutting and slashing over 55 hectares of fuel breaks in its bushland reserves.

Sheoak Road

A 3.2 km strategic fire break is being constructed along both sides of Sheoak Road, east of Pony Ridge Road guided by the Sheoak Road Vegetation Management Plan.

Last year Council received an \$83,332 grant from the Federal and State Governments' *Natural Disaster Resilience Program*.

Since 2008, Council has thinned vegetation, pruned trees along the road and undertaken prescribed burning. The plan includes an initial seven year burn plan of approximately 900 metres each year. The CFS has undertaken a prescribed burn along 1.8 km of this roadside. This is combined with Council thinning native vegetation, brush cutting of grass fuels and follow-up weed control programs.

Prescribed Burning

Prescribed burning is only one fuel load reduction tool. Burning can cause a lot of soil disturbance by promoting weed growth after a fire. Repeated fires in one area will eliminate some native species that need long periods between fire events.

Prescribed burning requires careful planning and coordination with Council staff, CFS volunteers and equipment. Factors including vegetation and weather conditions, consultation with the community as well as the availability of CFS volunteers and

trucks determine if a burn can be undertaken.

To ensure Council has fuel breaks in place for the Fire Danger Season we rely upon a number of fuel load reduction methods such as weed control, pruning large trees, thinning-out native vegetation and brush, in addition to some prescribed burning.



Parking in the Mitcham Hills

Where and how you park your vehicle is an issue in the hills all year round but more so during the bushfire season.

Lives and homes are put at risk if access to fire tracks or the most direct route to a fire is impeded by thoughtlessly parked cars obstructing traffic.

When you park your vehicle ensure that there is at least three metres of road clearance alongside your car which will allow other vehicles to pass. This is required by law and you may save a life!

Council has introduced emergency access routes parking restrictions to assist access for the Country Fire Service and other emergency vehicles in the following streets:

Eden Hills

- Willora Street
- Willunga Street
- Mountain Road
- Wonoka Street
- Wilpena Street
- Pinda Street

Hawthorndene

- Sloan Road
- Sycamore Crescent
- Sturt Avenue
- Chancery Lane

Blackwood

- Melton Street
- Brighton Parade

Glenalta

- Elizabeth Avenue

Belair

- Winding Way

Bellevue Heights

- Eve Road

Craigburn Farm

- Grand Boulevard



Top of page left: Fire Track in Randall Park.

Top of page right: Fuel Break in Randall Park

Left: Prescribed Burn along Sheoak Road.



Council's Services on Catastrophic and Extreme Fire Risk Days

No Council services will be available in the Mitcham Council's high fire risk area during a declared fire danger rating of Catastrophic or Extreme Fire Danger Warning for the Mount Lofty Ranges District.

To ensure the safety of staff and volunteers in response to the changes to the national fire danger warning system in the event of a Catastrophic and Extreme Fire Danger Warning no Council services will be available in the high fire risk area (Mount Lofty Ranges).

Services that will be affected are:

Library Services

Blackwood Library will be closed including the book chute. Services will continue to be provided at Mitcham Library.

Waste Collection

Domestic waste collection service (blue lid bin), green organic bin (green lid) and the recyclables bin (yellow lid) will not occur. Residents should leave their bins out until collected as services will be re-scheduled as soon as appropriate.

If there are a number of Extreme or Catastrophic fire danger rating days forecast, or running one after the other, Council will assess the lowest risk time to collect waste.

Animal Management and Other General Compliance

Attendance by Council concerning routine matters that have been reported will not occur. However, all matters should continue to be reported.

Community Bus and Personal Transport

The Community Bus and Personal Transport services will not operate. These services will resume as soon as the fire danger rating is downgraded.

Home Maintenance and Social Programs

Home Maintenance and Social Programs will not operate. These services will resume as soon as the fire danger rating is downgraded.

Council Facilities

Routine maintenance services for Council facilities will be re-scheduled.

Emergencies

Emergency situations that require the attendance of Council will be assessed on an individual basis.

Appointments

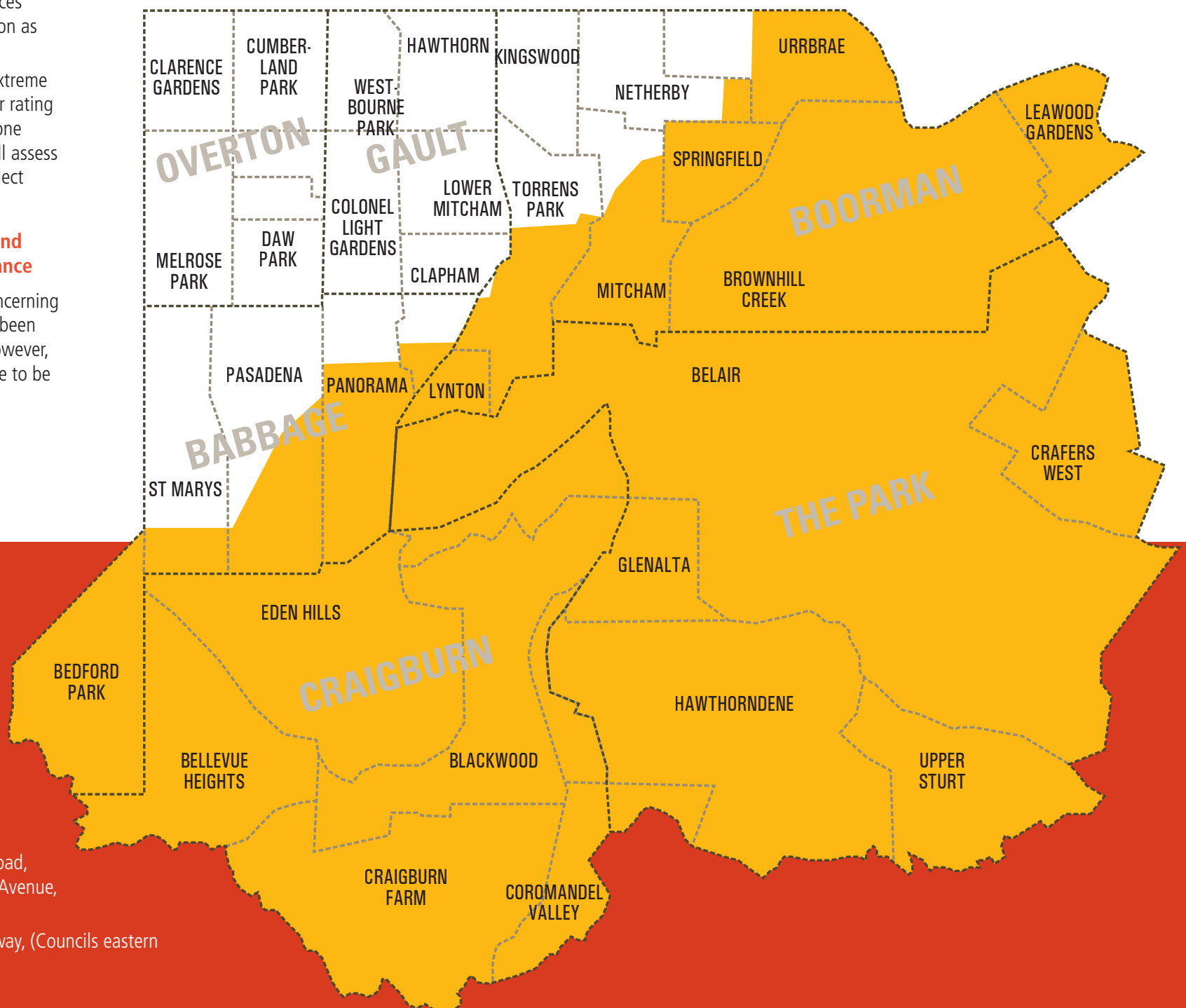
Appointments with Council officers will be re-scheduled. Council will contact relevant parties as appropriate, or alternatively contact can be made with the relevant officer to re-schedule the service.

Other Matters

All matters requiring the attendance of Council will be attended to as soon as appropriate once the fire danger rating has been downgraded. All matters that can be dealt with over the counter at the Civic Centre or by telephone or internet will occur as per usual.

All the above services will continue to operate on days of Extreme and Catastrophic Fire Danger Warnings in those parts of the Council area which are outside the Mount Lofty Ranges Region.

Council will continue to monitor the situation in relation to emergencies and/or essential services if the Fire Danger Warning extends over three days. Information and updates will be provided on Council's website and community service announcements.



Mitcham Council's High Fire Risk Area

West: South Road.

North/West:

Ayliffes Road, Fiveash Drive, Goodwood Road, O'Neil Street, Strathcona Avenue, Barretts Road, Belair Road, Blythewood Road, Old Belair Road, Taylors Road, Fullarton Road, Delamere Avenue, Waite Road, Cross Road.

East: South Eastern Freeway, (Council's eastern boundary).

South: Sturt River.

From your Elected Members



MAYOR MICHAEL PICTON

- New Brown Hill Creek Stormwater Plan
- New Mitcham West Activity Centre
- Scouting in the Hills
- Mitcham's Cultural Village Fair
- Womad EARTH STATION
- New Directors at Council

TELEPHONE: 0417 812 546

mpicton@mitchamcouncil.sa.gov.au

Council has been busy over the last few months considering a number of important issues that have been in the pipeline for some time.

New Brown Hill Creek Stormwater Plan

On Tuesday 6 September, Council and members of the Mitcham community were presented with the findings of the latest study undertaken by consultants, WorleyParsons, of the Brown Hill and Keswick Creeks Draft Stormwater Management Plan.

This new Draft Plan is the result of the Adelaide, Burnside, Mitcham, Unley, West Torrens Council's and the Stormwater Management Authority agreeing to review the flood mitigation proposals for Brown Hill Creek.

Mitcham Council's concerns that the original 2006 Management Plan was deficient, not only from a benefit cost ratio perspective but also because of environmental and social issues, prompted the review.

The original plan proposed the construction of two huge dams, both 20-25 metres - or over six stories high - in this pristine and beautiful area. Despite their large size and impact, the original plan in 2006 would still have left over 3,500 properties flooded in the event of a 1 in 100 year rain event.

As a Councillor, I opposed this plan from the outset, and I went to last year's mayoral election seeking a better deal for the environment and a better deal for Mitcham's residents.

WorleyParsons are now proposing that one much smaller high-hazard dam, with a spillway height of

12 metres, could be constructed in Brown Hill Creek Reserve one kilometre upstream of the caravan park.

A concrete lined channel is still proposed for the portion of the creek between Hampton Street and Cross Roads in Hawthorn.

I hope that further improvements to the plan can be achieved as part of the community consultation process. The aim is to have a robust and sustainable long-term mitigation proposal. The public consultation period will commence in October and will include an open day in Mitcham in November.

If you have any concerns about any aspect of the Draft Plan I encourage you to make contact with Council. Your feedback will be important to ensure that we are aware of all your concerns and that the issues are reflected in the final version of the Plan where possible.

New Mitcham West Activity Centre

Council has, after many years of searching and deliberation, finally purchased a property at 135-139 Daws Road, St Marys that will be able to be used as an activity centre for residents living in the western precincts of our city. While there are some planning requirements to meet before final settlement can occur, Council will be considering the level of activity that it will provide on the site. It is envisaged that the centre will be open for business late next year.

Scouting in the Hills

I recently had the privilege to attend two scouting events in the hills. The first was at the Eden Hills Scout Group when they welcomed members of the Asia Pacific Region Scouting Forum visiting Australia to one of their meetings. It was great to see the local scouting community show Scout leaders from other countries how a very successful Scout group operates.

I also had the opportunity to be present at the Belair Scout Group when Venturer, Elizabeth Affleck was awarded her Queen's Scout Award. Elizabeth is the 54th Queen's Scout recipient to come from the Belair Group in the last 58 years. This is a tremendous achievement not only for the local group but also for Elizabeth. Congratulations!

Mitcham's Cultural Village Fair

Council, the Mitcham Uniting Church and Gallery One combined forces recently to hold a 'Voices of the Village' fair at the Princes Road site to showcase the activities that are happening throughout the complex and celebrate the Village's second anniversary.

The Mitcham Orchestra, the South OZ Scrollers group, Mitcham City Brass Band, students from Mercedes College and St John's Grammar School, the Adelaide Sound Connection (Women's Accapella Choir), Tessa Broadbent and dancers, students from Terry Simpson's Ballet Studios and the new local singing stars, the Fowler

sisters singing as Sitara and others all combined to make the event an outstanding success. For details about the anniversary event and to find out what's happening in the Village in the future please contact our Centre Coordinator on 8372 8262.

Womad EARTH STATION

The inaugural Womad EARTH STATION festival being held in Long Gully from the 21 to the 23 October is shaping up to be an exciting event. It will be a venue for new ideas that explore ways we can build a sustainable relationship with our planet.

As Mitcham is a clean and green City, we are proud to be an event partner of this festival. Details about the speakers, acts and events can be found on their website at www.earthstationfestival.com.au

New Directors at Council

Finally, I would like to publicly welcome and acknowledge our three new Directors within Council. Mr Howard Lacy, an engineer, Mr Craig Harrison, a planner and Mr Wade Reynolds, an accountant. All three bring a vast amount of knowledge and experience to Mitcham and will add tremendous value to our Council under the leadership of our Chief Executive, Mr Matt Pears. My fellow Elected Members and I are looking forward to working with the new team to improve our City even more.



BOORMAN WARD

CR LEEANNE MORIARTY

- Hard Waste Collection
- Keystone Bridge
- Queen's Birthday Honours
- Voices at the Village
- Carrick Hill

TELEPHONE: 8379 3797

lmoriarty@mitchamcouncil.sa.gov.au

It is approaching the one year mark of my term as Councillor, on Mitcham Council. During that time there have been many issues to try and understand and then make decisions about. I always try to do, to the best of my ability, what I feel the people of Boorman Ward, and Mitcham, would want me to do. Sometimes, what I vote for is successful and sometimes I choose to not support a motion and in turn, it is successful and I have to accept that it is Council's decision. One motion I did not support was the decision to change how we collect Mitcham's domestic hard waste. I preferred the past method of kerbside collection and thought this was the most cost effective and efficient method. While I agree it is unsightly for a few days, the bulk of the waste is removed very promptly. This year, Council decided to try an 'At Call' method of collection. It will be interesting to see how this option works out for our community. I am always happy to live, learn and be corrected!

During the last few months I had great pleasure in seeing the completion of the restoration of the Keystone Bridge in Mitcham Reserve. This has been a long, ongoing project and is a credit to all those involved - residents, Council staff, tradesmen and other professionals, as well as my tireless Co-Councillor, Judith Weaver and Mayor Picton. It is wonderful to think it will be there to be enjoyed by many, for decades to come.

I also enjoyed attending the Queen's Birthday Honours celebration in the Mayor's Parlour. I met many interesting people from Mitcham and was intrigued by their various interests and what they had done to receive their particular award. The reasons were varied, but all had contributed to our community in amazing ways. It was a humbling experience.

The Mitcham Cultural Village held its 'Voices of the Village' Open Day on Sunday, August 28. What a wonderful event that was!

The feeling of community was most evident and as a member of the Mitcham Cultural Village Committee, it was rewarding to see so many Mitcham residents enjoying themselves in the sunshine. My sincerest thanks go to Lindy Taeuber who skills and vision for the Mitcham Cultural Village never ceases to amaze. We are most fortunate to have her working at the Village.

I attended a local fundraising Cocktail Party at Carrick Hill recently. It is a wonderful building and garden, and perfect venue for a function. I enjoyed their current exhibition called 'Spectacular Tree Stories' showing photographs and paintings of the most magnificent trees with their splendid canopies. Many of the trees are in Boorman Ward and stand gloriously in our own streets and parks. All too often, we don't tend to look up and enjoy the sight of the wonderful trees we are blessed to have in Mitcham. Admission into the gardens of Carrick Hill is free and definitely worth a visit or two. If you can, take the time to admire the majestic trees in the garden, as well as the ones in the exhibition.

Other areas that I have been involved in recently have included looking at improving the facilities at Kingswood Oval, increasing bike lanes in the City of Mitcham, road safety improvements for Fife Avenue and other areas of Torrens Park, erecting of bollards in pedestrian walkways in Springfield, street tree maintenance, and assisting residents with concerns about the SA Water pipeline construction as it continues through Boorman Ward. Once again, the issues over the last few months have been most varied and I have enjoyed being able to help my fellow residents, as best I can.

Code of Conduct for Elected Members

Elected Members have recently reviewed and adopted a Code of Conduct.

The Code of Conduct outlines the type of behaviour that members of the community could reasonably expect of their elected representatives. Expected behaviours are outlined under headings such as:

- decision making (within the Council Chamber);
- relationships - with the community, other Elected Members and the Chief Executive Officer and staff;
- the use of Council resources;
- the use of Council information;
- communication - with the community and the media; and
- conflict of interest.

The new Code also provides a thorough process for handling complaints, with all formal complaints being investigated by an independent, external investigator. Other main principles underpinning the complaints process are:

- making the distinction between informal and formal written complaints, with the aim of successfully addressing informal complaints before they escalate into formal complaints;
- a preparedness to utilise mediation to resolve a conflict with the agreement of both parties; and
- the affording of natural justice to all parties of a dispute.

Illegal or corrupt behaviour is not covered by the Code of Conduct. Such complaints will be forwarded immediately to the appropriate Government agency.

An additional feature of the new Code is that it now applies to all independent and community members of Council's committees. The committees now covered by the Code are the Audit Committee, Mitcham Heritage Committee and Mitcham Cultural Village Committee.

The content of the Code can be viewed at Council's Customer Service Centre, 131 Belair Road, Torrens Park or www.mitachamcouncil.sa.gov.au.

Draft Stormwater Management Plan

The Draft Stormwater Management Plan was publicly released on September 6 at a well attended public briefing held in the Council Chambers.

In 2008 the Stormwater Management Authority conditionally approved the 2006 Flood Management Master Plan as a stormwater management plan. At that stage concerns were expressed (by Mitcham Council) about the proposals which called for two concrete dams, one of which was eight storeys high, to achieve the desired outcome which was to provide flood protection equivalent to the 100 year Average Return Interval (ARI) event or better, as opposed to the 10 year ARI level of protection which exists at present. Further work has been completed and, as a result, the new document now concedes that a single dam about half the height to that originally proposed would provide better protection.

There has now been recognition that the larger catchment has both a rural and a plains component – both of which respond differently.

The calculations to determine the flooding problem therefore reflect these differences. In the hills section, a flood situation is caused by comparatively low rainfall intensity over a 36 hour period and on the plains, by a short duration (approximately 90 minutes) high intensity rainfall. In many parts of the metropolitan area, the creeks are little more than concrete drains, whereas in Mitcham the creek is, in the main, still a creek and not a concrete drain. Environmental and recreational needs are therefore paramount for the Mitcham sections of the creek.

Prior to the introduction of people to the area, the creek took the line of least resistance and, where it came to a tree or rock, it moved around it. By introducing man-made objects into the equation, the creek was constrained and was made to flow in a channel which fitted the amount of water most of the time. Unfortunately when a heavy rain came, there was insufficient channel capacity for the water. Even worse, the trees, bridges, buildings etc which were within the creek either restricted the flow or had some other deleterious effect on the flow

of water. During the 2005 flood, it was made worse when rubbish blocked the creek at bridges etc and it flooded.

The creek is now being surveyed which will reveal the points which pose a threat to the proper flow when it is in flood, such as trees, build up of silt etc. I have walked some of the creek between Hampton Street and Cross Road and there are many constraints to the proper flow of the creek including some very significant trees both dead and alive. Part of this section of the creek has been recommended to be upgraded requiring approximately 250 metres of concrete lined channel with dimensions of four metres wide and two metres high. The concept design also allowed for transitioning of the height to three metres over a distance of 50 metres upstream from Cross Road.

There are also some sections of the creek within the Soldier's Memorial Gardens which have been restrained and reconstructed so as to allow the construction of buildings and car parks. There may be an opportunity for this area to be redeveloped within the near future.

The Draft Plan will now be subject to a six week community consultation from October 31 to December 12 when the public will be invited to discuss the plan and provide feedback. Times and locations for the community consultation process will be confirmed soon and promoted to the public through the Council website.

Community Consultation for Leases and Licences

There have been a number of leases and licences within the Council area which are subject to review and which has caused some concern to residents. It is critical that these are appropriately reviewed by Council and administration with appropriate community consultation. Any community concerns must be considered by Council which should not be intimidated by particular interest groups in arriving at a decision.

The community has the right to reasonable access to community land to exercise themselves by way of a fun game of soccer, walk a dog, go for a jog or kick a football. It is community land for the community and must be treated as such.



GAULT WARD

CR CHRIS ADCOCK

- Draft Stormwater Management Plan
- Community Consultation for Leases and Licences

TELEPHONE: 0428 724 315

cadcock@mitchamcouncil.sa.gov.au

Ocean Swells

I have a bitter-sweet tale to tell. Of an awfully expensive building complex and another with modesty on its side.

As someone always believing that Council rates should be kept as low as feasible I don't know whether to laugh or cry – or whimper. Two dramatic events have occurred within the City of Mitcham. You know about one. This column may be the first chance you have of learning about the other. What are they?

Firstly let me explain them with the parable of the acorns. Squirrel Nutkin assiduously collected most of the acorns of the forest. Squirrel Twinkleberry found only a few but she was immensely grateful for what she had. Nevertheless all the other squirrels faced the prospect of lean pickings for as we know acorns do grow on trees – with limited supplies.

A Moment of Joy

Now for the sweet side of my story. It is with immense pleasure I can announce that City West finally,

finally, finally – after so many years has its own Council centre.

For whom? Everyone in Babbage Ward, for everyone over the other side of Daws Road – all our friends in Overton Ward. But also I vouch - safe for many of the merry men and women living east of Goodwood Road in August Gault Ward. Nevertheless, it would be great if residents from all Mitcham wards visited.

And where exactly is this precious new pearl to benefit us all? On Daws Road near South Road. It was known as the Melrose Park School and has been bought by Council.

It was one of the greatest joys of my life when I successfully moved that Council negotiate for its purchase. And I sincerely thank administration for their sterling work in this regard.

Now you too, dear reader, can have a say in how it can be used to benefit us all? Tell Council what you would like! For my part I have said...maximum volunteer input, club facilities, tea, coffee, biscuits on a \$1 honour basis (proceeds to local charity), mini-library, carpet bowls, cards etc, maximum use of

its sporting area and particularly a dynamic volunteer or part-timer to coordinate things. However, I have to say all is not totally clear sailing to the horizon. Planning approval is necessary for it to become a thriving, throbbing new annex of Council. I will say a little prayer just about every night that this possible impediment vanishes in the face of common sense.

Now to wipe the grin off my face and shed a tear or two. Although I temper my remarks by saying libraries are important and well patronised and the present Blackwood Library may not be fully meeting current occupational health and safety standards.

However Council (not through me) has decided on a new library complex at Blackwood which could cost more than \$16.5 million. It was a democratic vote by the majority of councillors. But oh dear, oh dear! What then were my objections? The huge potential cost, more than 12 times the modest cost of our City West project; the affect on rates (only God knows how much they will change upwards); the huge

borrowing costs; and the fact that there is no certainty about funding from either Commonwealth or State Government authorities.

Oh, and I almost forgot. The fact that in our annual residents' survey 84% of respondents said they were already satisfied with library facilities.

To Be Positive

So as you now know, it has been a very bitter-sweet month for me. But let's be positive. Council's Mitcham Cultural Village on Princes Road, east of Belair Road - within Boorman Ward – seems to be doing well. It recently had a 'Voices of the Village' series of interesting events.

Now of course we on the plains have a new kid on the block – our City West Centre. Competition is healthy. Let everyone who not only wants our Mitcham Council to thrive but to enhance its spirit and soul – bombard the Council with (moderate cost) ideas for how we can make the City West Centre a beaming and shining light for the southern suburbs of our fair city.



BABBAGE WARD

CR CHRISTOPHER GELLIE

- City West
- Blackwood Activity Centre

TELEPHONE 0417 080 133

cgellie@mitchamcouncil.sa.gov.au

Council continues to investigate and make informed decisions on large and small issues to improve the amenity and facilities for our constituents.

Blackwood Football Club

The oval will have a new perimeter fencing that will improve the appearance of this major local sporting facility and create a safe boundary between the oval area and the surrounding roads.

Blackwood Recreation Centre

Our local Blackwood Recreation Centre is here to stay. Council has voted to continue to support the Blackwood Recreation Centre so that this highly patronised local recreational facility can continue to

provide this valuable service to the whole local community.

Blackwood Library/Activity Centre

Council are committed to a new Blackwood Library/ Activity Centre. Council have thoroughly investigated and confirmed our ability to fund this project over a 10 – 15 year term. There are still some key areas for clarification before firm plans are progressed. These include safe and convenient access to the site for both commuters and pedestrians, adequate and

shared carparking opportunities, consideration of the outcome of community consultations and recommendations from previous studies for the area.

Womad EARTH STATION Belair National Park 21 – 23 October

What an amazing International event to be hosted in our own beautiful National Park. "Womad EARTH STATION is a unique festival exploring our relationship with the planet alongside extraordinary music from around the world." Look forward to 19 groups and

90 international artists, Global Music covering ancient traditions and contemporary dancehall, talks by leading scientists, academics, writers and thinkers as part of THE PLANET TALKS program, roving performers, sculptures, workshops, great food and wine, and THE MARKET with stallholders selling environmentally friendly products and services, demonstrations, information about sustainability and holding demonstrations, workshops and discussions. For more information visit the site dedicated to this event www.earthstationfestival.com.au

Tour Down Under

It is hoped that Council will apply for consideration for Blackwood for a start or finish of the Tour Down Under for 2013. I will be contacting local businesses in the next 2-3 months to ascertain their interest in supporting this event through sponsorship.

I look forward to continuing to support our local constituents in moves to improve the cultural and physical development of our area. Please contact me with any enquiries on 0411 400 341 or jsilbereisen@mitchamcouncil.sa.gov.au



CRAIGHURN WARD

CR JANE SILBEREISEN

- Blackwood Football Club
- Blackwood Recreation Centre
- Blackwood Library/Activity Centre
- Womad EARTH STATION
- Tour Down Under

TELEPHONE: 0411 400 341

jsilbereisen@mitchamcouncil.sa.gov.au

Review of Mitcham Junior Primary and Primary Schools

The Minister for Education has announced a review, pursuant to Part 2A of the Education Act 1972, of Mitcham Junior Primary and Primary Schools.

The review will consider and make recommendations on the proposed amalgamation of Mitcham Junior Primary and Primary Schools with regard to the educational, social and economic needs of the school communities and the State as a whole.

The Review Committee is calling

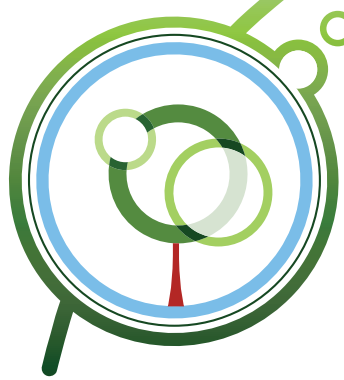
for submissions on this matter from the school communities.

Written submissions should be marked confidential and forwarded by 31 October 2011 to The Chairperson, Review Committee, Mitcham Schools, Hillview Road, Kingswood SA 5062.

Open Forum

An open forum will be held at the school on 24 October at 6.30 pm.

For further information contact the Southern Adelaide Regional Office on 8207 3700.



WOMAD EARTHSTATION

BELAIR NATIONAL PARK 21-23 OCTOBER 2011
IN TUNE WITH THE PLANET



A new festival being held at Long Gully, Belair National Park from 21–23 October.

It is an opportunity to receive and transmit ideas, issues and solutions towards a more sustainable planet. This innovative event melds the intellectual and cultural energies of leading minds with a performance program featuring some of the world's most accomplished and diverse musicians. The festival audience will be inspired by a refreshing and rare combination of discussion and music during a weekend of forums, displays and performances.

GLOBAL MUSIC PROGRAM

The Kronos Quartet
Abdullah Ibrahim
Rickie Lee Jones
Zakir Hussain
Toumani Diabate
Konono No. 1
The Tallest Man on Earth
The Audreys
The Catholics
Emma Donovan Band
Frank Yamma and David Bridie
Iwantja Band

Ellis Pearson - "Man Up a Tree"
Mark Atkins
Mista Savona
Pacific Curls
Paris Wells
Shanghai Chinese Orchestra
Stan's Cafe "Of All the People in All the World"
Vika and Linda Bull
Wu Man
The Yearlings

HIGHLIGHTS OF THE GLOBAL MUSIC PROGRAM



ABDULLAH IBRAHIM
For 50 years, Abdullah Ibrahim has been a towering figure in South African jazz. A piano prodigy from the age of seven, in 1960 he joined the Jazz Epistles with Hugh Masekela, to record South Africa's first progressive jazz album. Then known as Dollar Brand, Abdullah played across Europe and the US with his trio, and played five shows substituting for Duke Ellington in the great bandleader's orchestra.



SHANGHAI CHINESE ORCHESTRA
Led by conductor Wang Fujian, the Shanghai Chinese Orchestra plays a crucial role in the continuing development of traditional Chinese music. This remarkable group of young musicians performs on the zheng, dizi, erhu, pipa and other Chinese instruments seldom featured in the West, in repertoire from large-scale Chinese orchestral works to traditional plucked-string and percussion instrumental pieces and classic Cantonese music.

Running in conjunction with Planet Talks and Global Music Programs, **Womad EARTH STATION** will host a range of exciting, active spaces aimed at encouraging involvement, learning and fun for

everyone in attendance over the weekend, including **The Market** an intimate area featuring a range of invigorating, inspiring and enlightening displays, discussions and demonstrations of sustainable

practices which can be applied within the home and on a community level. The Market will also be the place to indulge in ethical retail therapy.

PLANET TALKS PROGRAM

The Planet Talks Program includes sessions which will look closely at a range of key environmental sustainability issues with topics including:

- Welcome to the Anthropocene: Humanity's Impact on Earth.
- Greening Australia's Economy.
- Populate and Perish?
- The Limits to Growth.
- River, Estuary, Sea – Who Cares about the Coorong?
- The Price of Inaction.
- Building Sustainable Businesses.

GUEST SPEAKERS

Bruce Thom AM (Wentworth Group of Concerned Scientists and Emeritus Professor University of Sydney)
Cate Blanchett and Andrew Upton (Sydney Theatre Company)
Giselle Weybrecht (author of The Sustainable MBA)
Hunter Lovins (Founder of Natural Capitalism Solutions)
Samantha Mostyn (Founder of the '1 Million Women' movement)
Robyn Williams (ABC: The Science Show)

Ian Lowe OA (President of Australian Conservation Foundation)
John McTernan (Global expert on public service leadership, adviser to Tony Blair)
Matthew Wright (Director, Beyond Zero Emissions)
Rod Quantock (Australian Comedian)
Mike Young (Director, Environment Institute Adelaide University)
Mike Sandiford (Director, Melbourne Energy Institute and Professor of Geology Melbourne University)
Paul Gilding (Author of *The Great Disruption*, former Head of Greenpeace International)
Peter Cosier (Director, Wentworth Group of Concerned Scientists)
Prof Lesley Hughes (Head of Biological Sciences, Macquarie University and Climate Change Commissioner)
Roy Neel (Vice President Al Gore's Chief of Staff)
Paul Willis (Director, RiAus)
Stephen Pekar (Assoc Professor School of Earth and Environmental

Science, Queens College New York State)
Tim Stubbs (Wentworth Group of Concerned Scientists)
Bernie Hobbs (ABC: The New Inventors)
Associate Professor David Paton
Dominic Skinner (Freshwater Ecology Expert)
Associate Professor Keith Walker
Dr Graham Turner (Senior Research Scientist, CSIRO Sustainable Ecosystems)
Fiona Heinrichs (Author, *Sleepwalking to Catastrophe*)

HIGHLIGHTS OF PLANET TALKS PROGRAM



PAUL GILDING
Paul is an independent writer, advisor and advocate for action on climate change and sustainability. He has been an activist and social entrepreneur for 35 years and is widely recognised as a global authority and thought leader on sustainability and business.



L. HUNTER LOVINS
The President and founder of the Natural Capitalism Solutions which, in partnership with leading thinkers and implementers, creates innovative, practical tools and strategies to enable companies, communities and countries to become more sustainable. Lovins has consulted for scores of industries and governments worldwide, including the Pentagon, U.S. Environmental Protection Agency, Department of Energy, and the governments of Jamaica, Australia and the US.

SPECIAL TICKET OFFER FOR MITCHAM RESIDENTS
Purchase tickets at a special reduced price of \$134 for a three day weekend pass, a saving of 20% of the original ticket price of \$174.
To purchase tickets at this special price visit www.earthstationfestival.com.au and use the code word **FOXY**.



what's on this spring

at a church near you?

Fun for every age
Blackwood Hills Baptist Church
10am/7pm Sundays @ 72 Coromandel Pde, Blackwood
You'll find a relaxed and friendly atmosphere at Blackwood Hills Baptist Church. There are people of all ages, relevant messages, great music and fun activities for the kids. Come visit us!
For more information, call 8370 0333 or visit the website bhbc.org.au.

A brand new church
Village Church - Melrose Park
10:30am Sundays @ Edwardstown Primary School
Village Church has been meeting at Edwardstown Primary School since February. We're a new and growing family-friendly church. We would love to have you join us!
For more information, call 8370 3256 or visit the website thevillage.org.au.