

MITCHAM

ACCESSIBLE, HEALTHY & CONNECTED COMMUNITY ■ SUSTAINABLE CITY ■ DYNAMIC & PROSPEROUS PLACES ■ EXCELLENCE IN LEADERSHIP

COMMUNITY NEWS



SEPTEMBER 2022

Mitcham City Brass celebrates 120 years

The City's much loved brass band is set to celebrate more than a century of continuous banding with a reunion and concert.

SEE STORY PAGE 3



Mitcham City Brass players Jordan Miegel, Ruth and Peter McIntyre. Jordan is pictured with a bass drum purchased when the band formed in 1901, refurbished 20 years ago for the 100th anniversary of the band.

DYNAMIC

VOTE



2

Vote in the 2022 Council elections.

CONNECTED



4

Support services in the City of Mitcham.

LEADERSHIP



6

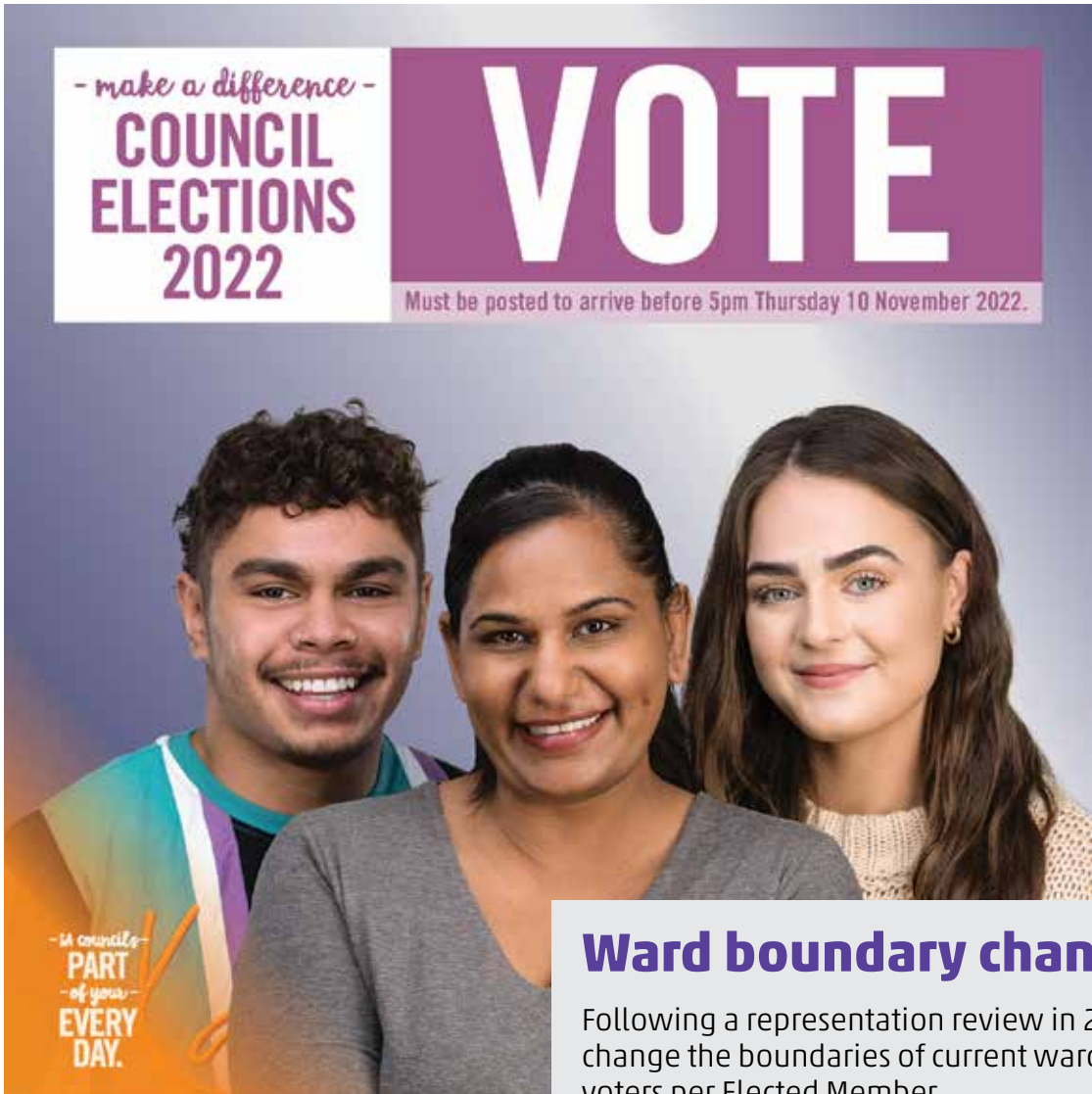
Character areas preserved.

SUSTAINABLE



8

Continuing Pelzer's legacy.



Meet the candidates

The City of Mitcham will be hosting four 'Meet the Candidate' sessions for the Local Government Elections 2022 at the following locations and times:

- **Craigburn and The Park:**
Karinya Clubrooms, Shepherds Hill Road, Eden Hills, **Thursday 22 September, 7pm to 9pm**
- **Babbage and Overton:**
St Marys Sporting Facility, Laura Avenue, St Marys, **Thursday 29 September, 7pm to 9pm**
- **Boorman and Gault:**
City of Mitcham Civic Centre, 131 Belair Road, Torrens Park, **Thursday 6 October, 7pm to 9pm**
- **Mayoral:** Mitcham Cultural Village, 103C Princes Road, Mitcham, **Thursday 13 October, 7pm to 9pm**

Vote! 2022 Council Elections

All voting in Local Government elections is by postal voting. Electors will receive their ballot packs between Friday 14 October and Thursday 20 October 2022.

Every person on the electoral roll will receive by post a pack containing the following:

- a ballot paper for each contested election for which you are eligible to vote
- a profile for each of the candidates
- an envelope, with a declaration flap attached, into which you will place your ballot paper/s
- a reply paid envelope to contain the completed ballot material
- a postal voting guide

Voting closes at 5pm on Thursday 10 November 2022.

Voters can either post their votes in the reply paid envelope or you can hand deliver your voting envelope by placing it in the ballot box at the City of Mitcham Civic Centre, 131 Belair Road, Torrens Park.

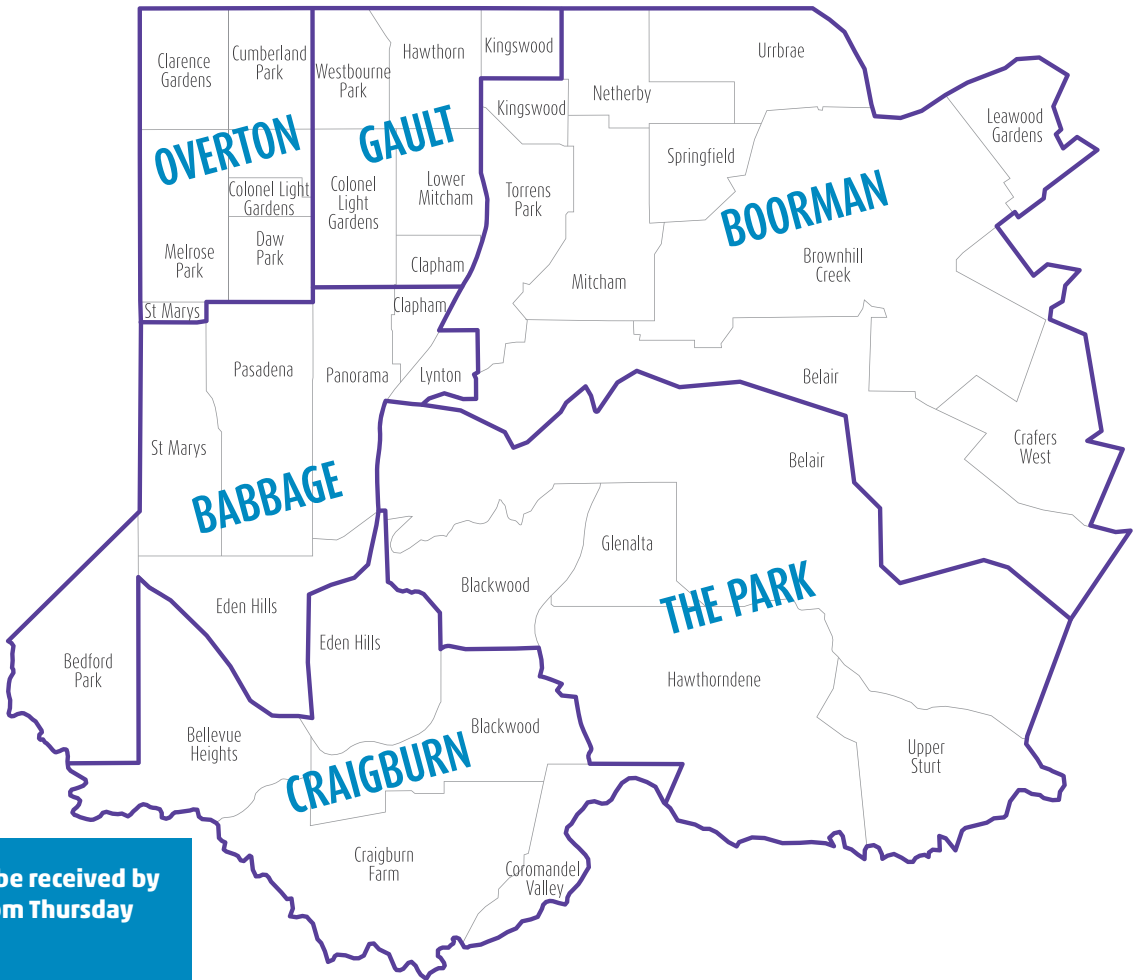
Ward boundary changes

Following a representation review in 2021, City of Mitcham is set to change the boundaries of current wards to better reflect the number of voters per Elected Member.

These new ward boundaries come into effect for the November elections, meaning some residents will receive ballots for a different ward than they did at the last election.

There are still six wards, but some boundaries have changed. The number of Elected Members will be reduced from 13 plus Mayor to 12 plus Mayor.

Visit www.mitchamcouncil.sa.gov.au/ward-maps for a detailed map of new ward boundaries.



If you post your ballot papers they must be received by the Electoral Commission of SA before 5pm Thursday 10 November 2022.

Mitcham City Brass celebrates 120 years

Mitcham City Brass is set to celebrate 120 years of history with a series of events in October including an anniversary concert and reunion.

The concert will feature music played across the years and a large historical display of records, photographs, competitions and uniforms.

Mitcham City Brass communications officer Jo Cross said the event was originally planned for 2021 but was postponed due the pandemic.

"The year 2021 marked 120 years of continuous banding in the Mitcham area, something we are very proud of."

In the lead-up to the anniversary, all former players, musical directors, life members and their families are invited to reconnect with the band.

The concert will be held at the Vogue Theatre, 25 Belair Road, Kingswood, on Friday 7 October.

The concert is part of the 2022 Mitcham Band Festival that is to continue all day on Saturday 8 October.

Tickets are \$20 adults, \$15 concession, \$15 school card, under-13 free. To book, visit www.trybooking.com/cbacd or purchase at the door.

City of Mitcham is a proud supporter of Mitcham City Brass.

Top right: Peter and Ruth pictured marching with the band in the 1976 Christmas Pageant. **Inset:** Mitcham City Brass players Jordan Miegel, Ruth and Peter McIntyre with a bass drum purchased when the band formed in 1901, refurbished 20 years ago for the 100th anniversary of the band.



From juniors to life partners

Ruth and Peter McIntyre joined the Mitcham City Brass as juniors on the same day in November 1975. Forty-seven years later, they are still regulars - and married with three kids. Cornet player Ruth joined up after her mother, a widow raising nine kids at Brownhill Creek, saw an advertisement from the band.

"It cost 20 cents a night, once a week, and for that you got a uniform, an instrument and tuition," she says. "My older brother joined, then my younger sister, and mum ended up heavily involved herself."

Aside from meeting Ruth, Peter says being part of the band had given him many opportunities over the years, including a trip overseas playing with the SA Police Band in the Edinburgh Tattoo.

"For me it was a way of stress reduction, because I was in the police force for 36 years and suffered PTSD, and it was a way

of switching off," he says. "The band for us is somewhere comfortable; when you play music you don't think about anything else."

Ruth says in a community band, people of all ages are brought together.

"There's no generation gap - everyone is equal, no matter what age or occupation, everything stays outside when you're in the band room."

Jordan Miegel, 20, joined as a 10-year-old after growing up watching his father Brenton play, and is now an accomplished drummer, who has composed his own music for the band.

He loves being part of the band and would like to see more younger players sign up.

"In community banding, it's an unwritten rule that you do things for other people - you go in and help other bands, and you play in other bands - it's a great community to be part of."



Mitcham Brass Band pictured at Mitcham Reserve, circa 1905.

A long history

The first Mitcham Brass Band was formed in 1878 and rehearsed in the Mitcham Institute. In 1887, when the Teetulpa gold diggings were found in the Flinders Ranges, the band disbanded due to members leaving to follow the 'gold rush'.

Today's band was formed in 1901 by Carl Stanley, Geo Lawson and J Tyler.

During the First World War (1914-1918), the band gave regular concerts at the Mitcham Army Camp at Colonel Light Gardens.

On Armistice Day, the band headed a procession in Adelaide, then visited the Children's Hospital, Keswick Hospital, Home for Incurables, then the streets of Mitcham.

Today the band has around 40 members and performs several times a year including at City of Mitcham's Carols at Kingswood Oval on November 26.

For a decade-by-decade account of the band's history, visit mitchamcitybrass.org



SUNDAY SERVICES

10am & 7pm

72 Coromandel Parade, Blackwood

thevillage.org.au

ph. 8370 0333

Email bhbc@bhbc.org.au

PEOPLE
EXCITED
ABOUT
GOD



Join with us on





Support services here to help

A range of service groups offer support to those experiencing homelessness or disadvantage who live in the City of Mitcham.

Beacon is an emergency relief service run through the Mitcham Hills Church Interchange, Circle of Friends and St Vincent De Paul Society.

All three of these agencies attempt to address disadvantage both locally and in the wider community through assisting refugees, transient families and local residents.

Located at the Church of Christ on Shepherds Hill Road, Beacon has provided food parcels and vouchers to people for several years.

The Circle of Friends at Blackwood assists refugees across Adelaide, while St Vincent De Paul Society receives referrals for assistance through its head office.

Also in the Hills, the Lions Bargain Centre operates on Saturday morning from Shepherds Hill Road, providing access to low-cost items via donated goods.

Foodbank has been another resource used by City of Mitcham agencies, allowing people to receive free or low-cost fruit, vegetables and bread, and food vouchers to those needing assistance.

If you or someone you know is experiencing or at risk of homelessness, call 1800 003 308 or visit www.homelessconnectsa.org

Healing garden offers support

A restorative garden at the Edwardstown Baptist Church Community Centre aims to support healing and growth among refugees, asylum seekers and Culturally and Linguistically Diverse (CALD) people.

Established in April this year, the garden is tucked away in a sheltered corner to provide a safe space for visitors.

Volunteer Alan Millhouse said unlike a community garden, a healing garden was a place where trained trauma counsellors provided services in a non-confrontational environment.

"We can use the garden to connect what's happening in nature with what has happened to a person; it can help start conversations and support a healing journey."

The garden has a new rainwater tank purchased with support from a City of Mitcham grant.

The Community Centre offers a range of programs to support the community, including a new Op Shop, Gwen's Pantry food charity, Inspire Friendship club, which provides an inclusive program for people living with a disability and prevents isolation for anyone in the community, English conversation classes, a men's shed, a social soccer evening and more.

Gwen's Pantry is open 10am to 12pm Tuesdays and 10am to 2pm Thursdays.

The Seek and Save Op Shop is open Tuesday and Thursday 10am to 12 noon, and Saturday 9.30am to 12.30pm.



Volunteer Alan Millhouse in the Restorative Garden.



Lunch to welcome refugees, migrants

Anglican Parish of St Mary's priest Father William Deng will share his story as part of a Refugee and New Migrants lunch at St Marys this month.

Father Deng, who fled South Sudan at the age of 15 and spent 10 years in a refugee camp, is looking forward to speaking at the lunch, to be held at the Picket Fence Community Centre on Friday 23 September.

"When you come from different country, you don't know what to do, or who to ask," he says. "Refugees from other countries struggle with language, food, weather, culture – you name it. What they need is to be loved, welcomed and embraced."

The lunch is just one of the ways the Picket Fence Community Centre is looking after vulnerable people in our community.

The Centre also offers free morning teas, and lunch every day for \$3. Fresh produce from the Picket Fence Urban Farm on site is sold on Fridays for a \$2 donation, and for an extra \$1, milk and bread are available.

Volunteers run art classes, an on-site op shop, and a project centre that includes wood and metal workshops.

Picket Fence Community Centre is at 1167 South Road, St Marys.

Father Deng and Picket Fence Community Centre volunteer Steven McGrath.

Balance class aims to prevent falls

A new falls prevention program that aims to improve confidence through better balance is under way at Cumberland Park Community Centre.

Supported by a City of Mitcham grant, 'Happy Balance, Happy Life' is an exercise program run by fitness instructors Yuki and Ian.

Yuki says the program aims to reduce the risk of falls among people aged over 65 years in a fun and welcoming environment.

"With a few simple exercises, wonderful and positive results can be achieved," she says. "By improving balance, we can maintain a healthy, happy and safe life."

To join, call Yuki on 0424 724 914 or visit www.yukihealthandhappiness.com

Yuki and Ian demonstrate some of the exercises they teach in 'Happy Balance, Happy Life' classes.

When older people fall, the consequences can range from injury and reductions in movement to permanent damage. In 2019, 24,340 South Australians were admitted to public hospitals as a result of falls.

Participants undergo a free assessment before starting the program, meeting once a week over 10 weeks and taking home an illustrated sheet to help them do basic exercises at home. Classes cost \$5 per session.



Volunteers serve two million meals

Meals on Wheels Hawthorn has delivered its two millionth meal, reflecting the importance of this service to the City of Mitcham community.

One of the state's largest Meals on Wheels kitchens, the Mitcham group is seeking younger volunteers to enable the service to continue.

Volunteer Denise Pellen says the kitchen serves nutritious meals for 160 people a day, five days a week, catering to residents who are not able to cook for themselves or need help with meals.

Volunteers also carry out welfare checks and provide an important social connection, and cover a variety of roles,

from cooking and delivering meals to administration work and recording meal choices.

"It is a complex system and requires a lot of cooperation with a lot going on behind the scenes," Denise says. "We are looking for early retirees, students, retired couples or singles – anyone who wants to give back to their local community."

To register your interest, email volunteer@mealsonwheelssa.org.au or call 1800 854 453.

Volunteers Michael Brooke and Wendy Farley in the kitchen at Hawthorn.



Teddies bring smiles at Mitcham

Babies and toddlers who visit City of Mitcham's immunisation clinics are enjoying a welcome surprise thanks to the work of local knitting groups.

The immunisation team has joined forces with Council's Community Wellbeing team to offer a hand made knitted teddy to our youngest visitors to ease their fears or make them feel better after their vaccinations.

The teddies are knitted by members of our Community Wellbeing knitting groups at Blackwood and Cumberland Park.

Betty Wales, who joined the Blackwood knitting group two years ago, says it's a nice feeling to knit for others.

"I've always knitted; I like knitting babies' clothes and little things," she says. "I enjoy being part of the group, it's a good afternoon out."

Kalyra resident Mary Brumpton is also happy to be part of the group. "The Council bus picks us up and drops us here; it's very good. I'm vision impaired and it's good for me to get out and keep doing things."

As well as companion teddies, the group knits squares, scarves, premature babies' caps,

poppies for Remembrance Day and Christmas decorations.

Groups meet at Hewett Sports Hub, Blackwood, from 1pm to 3pm Mondays, and Cumberland Park Community Centre from 1.30pm to 3.30pm on Tuesdays.

To join a group, contact Council on 8372 8888.



Above: Mary Brumpton (left) enjoys being part of the Blackwood knitting group. Betty Wales (right) joined the knitting group two years ago. **Right:** Six-week-old Edward with his mum Kelly receives a knitted teddy from Anna in the immunisation team.



Preserving Mitcham's streetscapes

The City of Mitcham has updated its Planning and Design Code to better recognise and maintain its distinctive residential streetscapes.

The Special Residential Character Areas Code Amendment applies to streets in Cumberland Park, Westbourne Park, Hawthorn, Springfield, Belair, Blackwood, Eden Hills and Coromandel Valley.

Why the change?

These areas display attributes that contribute to a distinct visual identity. This is shaped by factors such as built form and repetition, setbacks and landscape features on private and public land.

Not be confused with heritage areas, character areas can be enhanced by new development that strengthens visual appeal. Heritage, on the other hand, represents a cultural legacy or history, which cannot be replaced once demolished.

For a detailed map of character areas, visit www.mitchamcouncil.sa.gov.au/future-city/urban-planning-and-design/special-character-areas

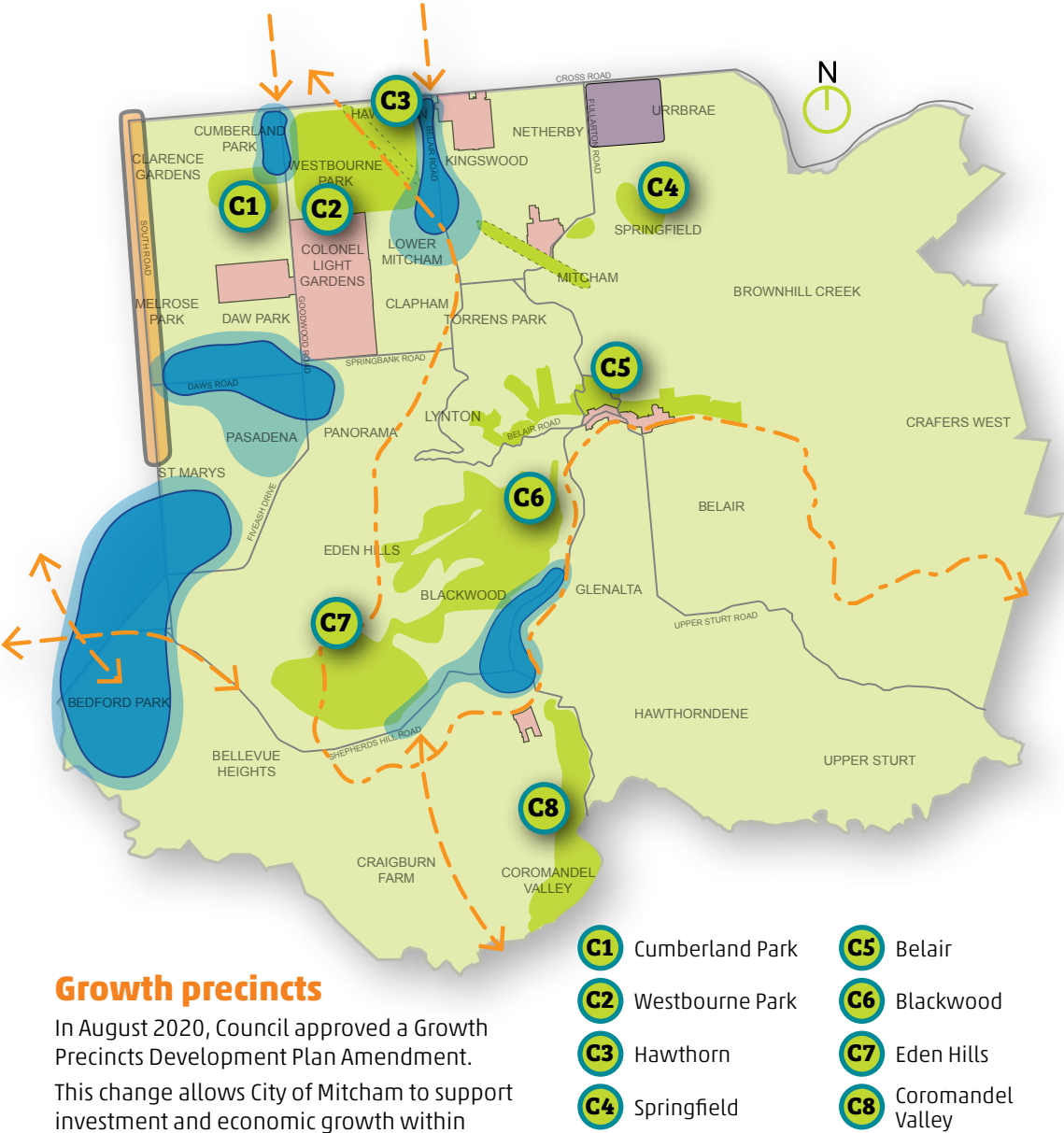
City of Mitcham's Spatial Vision

Character areas are part of City of Mitcham's Spatial Vision, a plan developed by Council, with help from the community, that sets out how the City should grow and develop in the future.

Launched in 2018, the plan has an emphasis on stimulating investment and economic growth, while maintaining the City's unique residential character areas.

The Spatial Vision sets out to:

- Identify key precincts with opportunity for growth and change to stimulate investment and economic development;
- Identify key transport connections to, from and within the City;
- Highlight areas for small-scale-gradual growth and change;
- Highlight areas that are 'off limits' for significant development and change (such as state and local heritage); and
- Highlight and reinforce areas with special residential character.



Growth precincts

In August 2020, Council approved a Growth Precincts Development Plan Amendment.

This change allows City of Mitcham to support investment and economic growth within existing centres, a greater mix of land use and flexibility for business diversification, increased housing choice and densities in locations around centres and opportunities for increased height and development intensity within our centres.

Examples of recent investment facilitated by the Growth Precincts DPA include work underway at the old Panorama TAFE site and at land immediately to the north of Pasadena Shopping Centre.

Looking ahead

The Special Residential Character Areas Code Amendment and Growth Precincts DPA are a direct result of ongoing strategic planning work, including extensive engagement and consultation with the City of Mitcham community. This work continues, with current investigations focusing on land adjacent the South Road corridor.



Join our catch-up school immunisation clinic

City of Mitcham is set to host a free catch-up immunisation clinic for students who missed their first dose at school.

Vaccines to be available include HPV Gardasil 9 Dose 1 and DTP Boostrix for Year 8 students, and Meningococcal B Bexsero Dose 1 and Dose 2 and Meningococcal ACWY Nimenrix for Year 10 students.

The clinic will be held on **Tuesday 20 September from 3.30pm to 6pm** at Council's Civic Centre, 131 Belair Road, Torrens Park. No bookings are required.

Find out more:
www.mitchamcouncil.sa.gov.au/immunisation



Have your say on changes to 'The Code'

City of Mitcham residents are invited to have a say on South Australia's new planning system.

In 2021, the State Government introduced a new Planning and Design Code ('The Code') to replace all Council development plans across the state, creating a single reference point for the state's planning and development industry. Changes to the Code (Code Amendments) expected over the next 12 months or so have the potential to impact City of Mitcham residents.

Amendments are set to include a range of topics including flood hazard mapping, bushfire hazards and future living (housing diversity).

Also on the horizon, the State Planning Commission is set to create regional plans as part of its 30-Year Plan for Adelaide and will investigate the use and benefits of trees and open space and the impact of infill development on urban tree canopy.

Council will continue to provide information to our community to ensure awareness of proposed planning changes, what they mean, and how you can participate in future engagement and consultation processes around these topics.

To have your say and be informed on upcoming Code Amendments, visit www.plan.sa.gov.au/have_your_say/code_amendments

October School Holiday Program

Join us in the spring school holidays for our 'Make and Create' school holiday program, featuring lego workshops, pigment painting and more!

For all the details and to book visit www.mitchamcouncil.sa.gov.au/school-holidays



MAKE & CREATE

Adelaide @ HEARING MITCHAM SQUARE

Book your FREE Hearing Test Today



Experience **brilliant sound** with a free 30 day trial of the latest hearing technology

- INDEPENDENT Advice from a Local Expert
- FULL RANGE of World's Best Brands
- NEW rechargeable, bluetooth & invisible solutions
- Wax Removal with Gentle Microsuction
- FREE Digital Hearing Aids for Eligible Pensioners & Veterans



8357 2290

adelaidehearing.com.au



Above left: The oak at Naomi Reserve, Pasadena. **Above right:** Pelzer prize winner Jill Woodlands and TREENET Director Tim Johnson plant the tree at Melrose Park.

Tree donation continues Pelzer's legacy

Two oaks planted at Melrose Park and Pasadena will continue the legacy of South Australia's first City Gardener, August Pelzer (1862-1934).

The trees are the first to be planted in 17 councils across Adelaide thanks to a donation by the inaugural winner of the Pelzer Prize, Jill Woodlands.

Curator of Nature Play Festival and Manager of the Digger's Shop at the Adelaide Botanic Gardens, Jill was awarded the \$10,000 prize for her environmental and conservation work.

By donating the trees, Jill hopes to acknowledge and build on Pelzer's legacy. Born in Germany, Pelzer established many of the plantations of Plane and Nettle trees, Moreton Bay figs, Norfolk Island pines, Kurrajongs and other species we enjoy in the City of Adelaide.

"I love trees, particularly the significant trees at the Botanic Gardens, and I know how critical it is that we have a legion of legacy trees across our city," Jill says. "Pelzer experimented with a lot of European trees, which in some cases have been better at

adapting to our changing climate, so he really was ahead of his time."

TREENET Director Tim Johnson, who sourced the trees locally as part of TREENET's contribution to the project, said the semi-advanced oak saplings had the potential to grow up to 20 metres tall.

"I am sure these trees will make a fantastic addition to the reserves and be enjoyed by future generations in years to come." Underground soakage trenches at Rozelle Reserve in Melrose Park and at Naomi Reserve in Pasadena will help the trees to flourish.

The planting is set to complement an upgrade of Rozelle Reserve which is funded in the City of Mitcham forward Budget, thanks to a State Government funding pledge of \$150,000.

The trees also complement City of Mitcham's goal to enhance its urban forest as a Tree City of the World.

BUY ONE, GET ONE FREE

Scan for details

jeffries
soil for generations

Buy one, get one free spring offer

Jeffries are providing City of Mitcham residents a 'Buy one, get one free' offer for Jeffries compost, soil and mulch supplies during September.

Using your green bin means composters can transform green organics into products that put carbon back into local soils.

To redeem the offer, simply visit Hollards, 20 Grange Road, Hawthorn, or Hawthorn Sand, Metal and Landscape Supplies, 96 Belair Road, Hawthorn, purchase Jeffries products and get a second bag for free. To simplify the process for residents and resellers, the vouchers are no longer required.

The second bag must be of equal or lesser value and cannot be used with any other offer. The offer is valid from 1 to 30 September 2022.

Happy gardening!



The free days for 2022/23 are:

Monday 10 October 2022
Saturday 15 October 2022
Monday 24 October 2022
Saturday 29 October 2022
Saturday 5 November 2022
Monday 14 November 2022
Saturday 19 November 2022
Monday 28 November 2022
Saturday 3 December 2022
Monday 12 December 2022
Saturday 21 January 2023
Saturday 18 February 2023

Free green waste days

Council will provide 12 free green waste days to assist residents prepare their properties for the upcoming Fire Danger Season. These include 10 free days throughout October, November and December and two free days in January and February.



This facility will be FREE with only green waste accepted – no rubbish. Green waste material can consist of grass cuttings, leaf matter and prunings (branches no larger than 200 millimetres or 8 inches in diameter). Proof of residency will be required. No commercial businesses.

The Lynton Green Waste Depot is at Beagle Terrace, Lynton.