

MITCHAM

ACCESSIBLE, HEALTHY & CONNECTED COMMUNITY ■ SUSTAINABLE CITY ■ DYNAMIC & PROSPEROUS PLACES ■ EXCELLENCE IN LEADERSHIP

COMMUNITY NEWS



JANUARY 2022



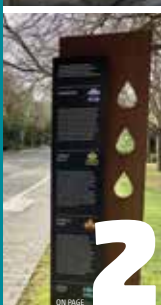
A semi-mature tree planted at Monalta Reserve, Belair, as part of Arbor Day 2021.
Photo: Catherine Leo Photography.

Creating a Sustainable City

City of Mitcham is taking steps to create a greener, cooler environment, a circular economy, and preparing for and mitigating against climate change.

SEE STORY PAGES 2 & 3

SUSTAINABILITY



2

An in-depth look at Council's 'green' initiatives.

PLACES



4

City of Mitcham Annual Report 2020-21 highlights.

LEADERSHIP



6

Hear from your Elected Members.

COMMUNITY



8

Australia Day 2022.

SUSTAINABLE CITY



Working towards a Sustainable City is one of four key goals set out under City of Mitcham's Strategic Management Plan, Mitcham 2030.



Enhancing our urban forest

In 2020 Council was named a **Tree City of the World**, one of only eight across Australia and New Zealand. To qualify, Councils must meet five core standards, including assessment and management of trees, regular assessments and an annual celebration of trees.

Arbor Day was first held in 2020 as a virtual event, and again in 2021 with a tree planting day at Monalta Reserve, Belair. A total of 12 semi-advanced trees were planted along with 300 understorey shrubs, with thanks to students from Belair Primary School and St John's Grammar School. As part of the celebrations, 500 trees a year are distributed across the community.

Council has developed a four-year delivery program to deliver on its goals of creating a greener, cooler environment, creating a circular economy, sustainable future and preparing for and mitigating against climate change.

City of Mitcham continues to play a leading role by supporting and implementing research and embracing innovative methods in urban landscapes and planning, creating real benefits to the environment and our community.

Climate emergency

In October 2019 Council declared a **climate emergency**, providing high level direction for Council to work with key partners to deliver more sustainable outcomes and climate energy improvements for the community.

As part of the **Cities Power Partnership**, Council has committed to five pledges related to sustainable procurement, waste, renewable energy, low emission transport and energy efficiency.

As well as purchasing four electric vehicles and six charging stations, other initiatives include the upgrade of 5,000 street lights to LED and installation of 152 kW solar photovoltaics across nine Council sites.

Read more: www.mitchamcouncil.sa.gov.au/environment/climate-change

Waste targets

Council aims to reduce waste to landfill by 75% across its commercial and domestic waste streams by 2030. During 2020/21, recycling initiatives at Council's commercial sites resulted in a diversion of 87.2% (4,087 tonnes) from landfill, preventing generation of 459 tCO₂e.



National Park City

City of Mitcham threw its support behind Green Adelaide's successful bid to make Adelaide Australia's first National Park City, and the second globally. To find out more and add your signature to the Charter, visit www.adelaidenationalparkcity.org/charter



Weed and pest control

City of Mitcham manages 40km of trails, 945 hectares of open space and 287 parks, gardens and recreational areas.

Across all these areas, Council uses a range of methods including reserve inspections, aerial photography and 'drill and fill' techniques to manage weeds and pests to maintain and enhance the tree canopy.



Pasadena Biodiversity Corridor

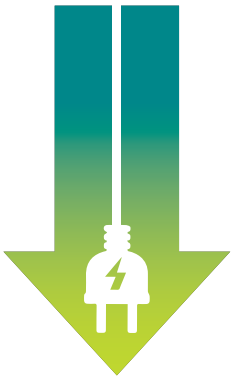
Jointly funded by the City of Mitcham, Green Adelaide Board, Federal and State Governments, this project aims to improve the sustainability and amenity of a large tract of Pasadena by redirecting underground stormwater flows to a creek line and revegetated areas. The Pasadena project is a great example of investment in 'green infrastructure' to reduce heat and improve biodiversity and water quality outcomes.

Soakage pits and trenches

Used by Council since the mid-2000s, soakage pits are rock-filled trenches connected by pipes that allow stormwater to be fed into local verges and reserves.

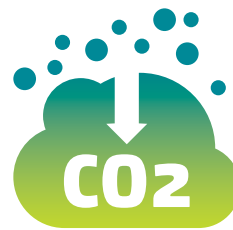
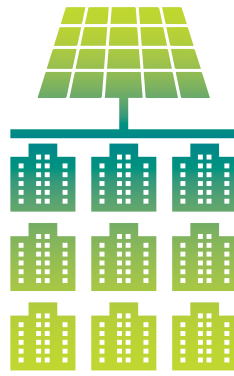
Benefits include improved water quality, prevention of saturation or flooding, reduction of ground movement and cost savings.

39%
reduction
electricity use
2014 to 2019



34%
reduction in
corporate
emissions since
2014

152kW
solar installed
on nine Council
buildings



34%
reduction
in Council
greenhouse gas
emissions since
2014

4,000 litres
of water can be
captured per 8 sqm
of permeable
pavement
each year with an average
rainfall of 500mm



Tree inlets

Installed as part of kerbing, tree inlets capture stormwater from streets that would otherwise be taken out to sea and directs it to street trees and verges through a gravel-filled pit, or 'leaky well'.

As well as supporting ongoing research, Council is advocating for and incorporating inlets as part of its works program.

A total of 500 tree inlets have been installed across the City, harvesting approximately \$1.25 million litres of water a year (based on a saving of 2,500 litres per inlet each year).



Permeable footpaths

Permeable footpaths are made with porous pavers that allow water to soak back into the soil and verge instead of out to sea as stormwater run-off.

Since 2009, City of Mitcham research has found that benefits include reduced maintenance and risk from tree roots, retention of irrigation of rainfall, mitigation of urban heat island effects, reduced water pollution and flood mitigation.

As part of its 2019-20 works program, over 70 per cent of Council's footpaths were permeable (17,000sqm), followed by 14,000 sqm in 2020/21. In 2021/22, 70 per cent (12,000 sqm) is planned; these three years alone equate to capturing 21.5 million litres of water.

St Marys permeable pavement car park

Recycled rubber from 500 tyres was used to create a permeable pavement car park at St Marys in an award-winning trial conducted by Council, University of Melbourne and Tyre Stewardship Australia.

Tree Planting Strategy

As part of its **Tree Strategy 2016-2025**, Council identified the need to increase tree plantings to redress tree loss across our City.

In 2019 Council supported a three-year program to enhance and accelerate our tree planting from 1100 to 1800 a year.

Council is working on a **City-Wide Tree Planting Partnership Program** in a bid to partner with State Government to plant up to 400 trees on State Government land within City of Mitcham.

Urban heat and tree canopy mapping

Council uses heat and tree canopy mapping to identify locations low in vegetation or high in heat island effect so that they can be targeted with tree planting and water sensitive design initiatives. See the map:

www.mitchamcouncil.sa.gov.au/environment/climate-change/resilient-south

Rain gardens

Rain gardens use native vegetation to treat stormwater runoff before infiltration through materials such as sand.

City of Mitcham has installed rain gardens across the City including at Norman Reserve, St Marys and Harvey Hayes Reserve, Daw Park. These areas are greener and cooler than they otherwise would have been through capturing, treating and re-using water locally.



Tree inlet research

Supported by Green Adelaide, Council is working with UniSA, Flinders University, the University of Adelaide, the University of Melbourne, Environmental Protection Authority, the Department for Environment of Water and Treenet Inc on a research project that covers 17.5 hectares in Hawthorn.

As part of this project, researchers are monitoring the effectiveness of 200 tree inlets and 3,244 sqm of permeable paved footpaths.

Soil movement study

Supported by a \$105,000 Green Adelaide Water Sustainability Grant, Council is working with UniSA and Flinders University at St Marys Reserve to investigate the effectiveness of water sensitive urban design on soil movement.



Smart watering: cooling the community

City of Mitcham worked with SA Water to install smart water technology at 15 sites across the City. Using moisture sensors, air temperature monitors, we are working to optimise irrigation. We anticipate a 10 to 30 per cent water saving through the smarter use of water.



CITY OF MITCHAM ANNUAL REPORT HIGHLIGHTS 2020/2021

Along with continuing to support those impacted by COVID-19, City of Mitcham's Elected Members and administration worked together to deliver a range of exciting and innovative projects and initiatives across 2020/21. The contribution made by Council's volunteers throughout the year to our City's open spaces, reserves, libraries, and community centres was also invaluable.

Council published its full 2020/21 Annual Report in December 2021 with some of the highlights provided here.

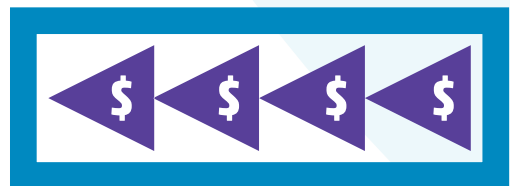
Winter Sessions

Winter Sessions at Home was live streamed from a St Marys studio every Friday night in June. This innovative initiative enabled Council to support local artists and industry, whilst delivering live local music to thousands of viewers in their homes in the wake of COVID-19.



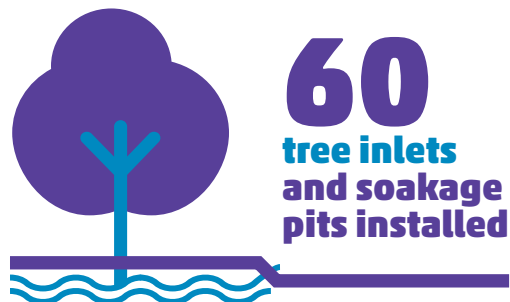
1800 trees

planted under Council's
Accelerated Tree Planting Program



10% rebate

for COVID-affected **businesses**
and residents



COVID-19 support

To help the community recover from COVID-19, Elected Members introduced a range of support measures including a 10 per cent rate rebate for ratepayers and businesses financially impacted by the pandemic. Community Wellbeing staff and volunteers worked to ensure members of the community remained connected and had access to the services they needed during COVID-19 closures, offering a temporary home delivery meals service, regular welfare checks, transport and activity packs to vulnerable residents.



Colonel Light Gardens Centenary

To celebrate the centenary of Colonel Light Gardens a steering group was created to deliver a range of events including a photographic exhibition, a Citizenship Ceremony and a project to install a heritage-style archway to welcome visitors to the suburb.

Colonel Light Gardens Heritage Standards

New Heritage Standards for Colonel Light Gardens were published by HeritageSA as part of the new planning system for South Australia. Colonel Light Gardens is one of Australia's most complete examples of an early 1920s garden suburb and became a State Heritage Area in 2000. The new Heritage Standards are in response to the introduction of the new planning system for South Australia and seek to ensure that the heritage value of Colonel Light Gardens continues to be conserved and enhanced into the future.

Increased Public Art Funding

Council awarded seven Public Art and Art Activation Grants totalling \$37,500. This diverse range of projects included:

- Belair Water Tower mural by Seb Humphreys, created around a concept emulating water
- Gnomes Escape, an installation of gnomes along business rooftops in and around Blackwood and at CC Hood Reserve in Panorama
- A new mural by Matthew Fortrose at Naomi Street Reserve, Pasadena, helping give the old building a facelift.

Other works included Stobie pole artwork by Kristy O'Neil, 'Duck Crossing' by Monica Prichard, and 'Brown Hill Tree' sign by David Hume.



Mitcham's Christmas Festival

Mitcham's Christmas Festival brought the community together through COVID-safe Christmas Celebration Spaces. The spaces at Mitcham, Blackwood and Panorama featured Christmas lights, decorations, music, pop-up entertainment, craft and geocaching activities. This concept enabled the community to connect throughout the festive period in their own time, in smaller numbers. Local schools and community groups embraced the concept by helping decorate Christmas trees made from recycled timber, with the finished trees on display across the three sites during December.

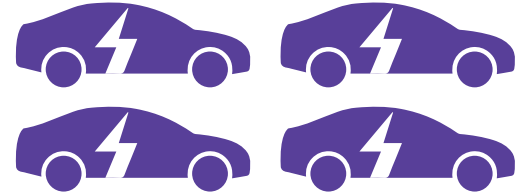
Reflect Reconciliation Action Plan

Council progressed its Reflect Reconciliation Action Plan, establishing a working group with a view to developing sustainable action plans to align with a meaningful reconciliation journey. The group conducted the Reconciliation Australia Workplace Reconciliation Barometer to establish a baseline of staff attitudes and understanding of reconciliation. A training provider who specialises in Aboriginal / Non-Aboriginal partnerships was selected to provide Cultural Respect and Safety Training for City of Mitcham staff.



Blackwood Community Hub and Waite Street Reserve Activation

The Blackwood Community Hub and Waite Street Reserve project is designed to revitalise a valued public precinct and create a vibrant community space in the heart of Blackwood. The project progressed to Stage 2 during 2020 with a second community consultation process undertaken in June-July 2020. This resulted in a more detailed design presented to Council late 2020. During this time both a Federal Grant (\$5 million) and a State Grant (\$3.5 million) were committed to the project. With the design evolving towards a \$12 million proposal, Council endorsed the project to construction in May 2021.



Four electric vehicles (EVs)



\$174,394

total grants awarded across more than **33** community groups and events



Neighbour Day

The Neighbour Day BBQ Competition provided City of Mitcham residents the opportunity to win a \$250 food voucher to help connect with their neighbours and share in the celebration of National Neighbour Day. All those that hosted a BBQ event provided positive feedback about the event, with new friendships started across generations, and many attendees making plans to host yearly BBQ events to bring the neighbourhood together.

You can read Council's full 2020/21 Annual Report at www.mitchamcouncil.sa.gov.au, also available for viewing or purchase at the City of Mitcham Civic Centre, 131 Belair Road, Torrens Park.



School Holiday Programs

The Community Development and Library teams collaborated ahead of both winter and spring school holidays to deliver a COVID-safe school holiday program. Community support was overwhelming with most activities fully booked, resulting in extra sessions being created to meet the demand for affordable family activities during the pandemic. The combined program has increased the ease of accessibility to the community.

Grants awarded

The City of Mitcham awarded a total of \$174,394 to individuals and groups who contributed to community public art, connections, events, gardens, mental and physical wellbeing or competed in national or international sporting competitions.

Sporting Club Upgrades

Local clubs welcomed major upgrades to several sporting facilities. At Karinya Reserve, Eden Hills, work began on a new two-storey clubhouse, changerooms and artificial playing surface. Major drainage works are set to transform playing conditions at Hewett Sports Ground at Blackwood, while at Kingswood Oval, players welcomed new unisex changerooms, an extended balcony, lift and refurbished clubrooms.

Boorman Ward

Cr Andrew Tilley

Telephone:
0411 158 882

atilley@mitchamcouncil.sa.gov.au



Happy New Year sounds a bit hollow when you consider what's in front of SA as Omicron marches through the community. South Australians have shown a great willingness to consider the greater good when it comes to signing in and social isolation.

Having not actually known anyone with the virus until now it was hard to know what to expect. However, since Xmas almost everyone in my family including some babies had it and recovered. It's not nice but the symptoms for double vaccinated folk are manageable.

Back to news for the City of Mitcham and Boorman Ward.

The completion of the Kingswood Oval upgraded clubrooms. The old clubrooms had not been touched for over forty years and the club has grown massively in that time. A weatherproof viewing deck with a toilet block and lift to the bar area upstairs made the most significant change. A small gym was added at the back as was a new cafeteria area and improved change room facilities. Your rates contributed about one third of the cost with the other coming from the State, Federal and private contributions. A great collaboration that gives the Unley Jets the facilities that they've needed for many years.

You may have also noticed that Scotch College, Unley High, and Mercedes College are growing. Some of this is overdue works and some is due to the imminent arrival of hundreds of year sevens who were once primary school students who now jump up to the big school. This brings SA into line with other state systems but adds a great workload to high schools. Unley is expecting a further 300 students.

Scotch Colleges huge construction on Blythwood Road includes an Olympic size pool and complex that will include public access.

Mercedes has conditional development approval for changes to its Carrick Hill Drive entrance, making it further from the lights on Fullarton Road and includes a large auditorium adjoining Rectory Walk. There was understandable community angst about the effect of increased traffic on Rectory Walk which was considered at length by the Council Assessment Panel.

Two other traffic issues stand out. You will have noticed the Cross Road /Fullarton Road intersection works are well under way. The loss of the mature trees in front of Urrbrae is such a loss. Unfortunately, there is more to come with the pines on Cross Road to go. At least the Gatehouse protest was successful and congratulations to all involved.

The other is the James Road /Belair Road intersection. The department plans to put a roundabout there mainly on the Randell Park western side. Council and resident groups oppose this. Council have asked DIT to pause works until the effect of proposed lights at the top of the hill have a chance to be installed and the effect measured before the roundabout works is initiated. This request has fallen on deaf ears.

There is such little of natural hills face remaining we feel every effort should be explored to preserve open space and natural habitat.

Craigburn Ward

Cr Lindy Taeuber

Telephone:
0420 372 566

ltaeuber@mitchamcouncil.sa.gov.au



Will this be a Happy New Year? We all hope so, but we also know that the pandemic is going to continue to influence if not dictate our lives and activities. Despite this I have confidence that our community is resilient, and we will support each other.

2022 is the final year of this Council's 4-year term with Council elections late in the year preceded by State and Federal Elections.

As such I have 2 main focuses:

1. Working with State and Federal Election candidates to advocate for funding for projects. Some projects underway have had cost increases and delays due to COVID - materials and construction worker shortages. The Blackwood Hub is one such project. I hope we can gain further support from candidates and philanthropy to enable this precinct changing building to progress in a timely fashion and include the elements the community needs as well as acting as a catalyst to enliven the entire Blackwood business centre.

2. Progressing projects that are already underway. These include the soccer pitch, clubhouse and a new facility for the Scouts and Rotary at Karinya Reserve, the Solar Panel Scheme, signing off on our Special Character Residential Areas as part of the State Government's new Planning and Design Code, finalising matters for the Blackwood Rec Centre, progressing Mitcham's Reconciliation Action Plan to formally commit to reconciliation with our First Nations People, progressing tree canopy work and getting discussions underway as to the future of the current library and nursery site on Main Road, Blackwood.

From a road traffic perspective there are significant State Government works which will be under construction for some time. These include the South Road Tunnel, the intersection of Shepherds Hill/Waite/Brighton, the Belair Triangle and the Belair/James intersection. Senior staff work with the State Government on these projects, but I am always mindful that these significant projects must be progressed while at the same time Council managed local roads must be maintained.

While on traffic matters, I'm sure everyone is aware that Year 7s commence in our High Schools from this year. As such there are going to be noticeable changes to traffic around all High Schools including Blackwood High School which is welcoming over 200 Year 7s. A group is looking at traffic issues in this precinct. Encouraging students onto buses, to cycle, walk or carpooling are all measures to ease congestion and improve safety.

The wellbeing of our community - financially, socially, emotionally, and physically - is always front and centre in my decision making and especially so as we all grapple with COVID. I would also like to take this opportunity to thank our staff, in advance, for what is going to be a complicated start to the year as they continue to provide services under difficult and changing conditions.

The Park Ward

Cr Corin McCarthy

Telephone:
0410 886 349

csmccarthy@mitchamcouncil.sa.gov.au



The last 12 months been very important for Mitcham and the hills residents that I serve.

Highlights from 2021

I was pleased to represent residents and see these transformative initiatives come to fruition:

- \$12 million Blackwood Community Hub commencing the build phase
- 10% COVID-19 rate rebate for businesses affected by restrictions on trading
- Certainty for the 4,000 people that use the Blackwood Community Recreation Centre weekly that Mitcham Council will offer and enter an acceptable long-term lease
- Community solar plan reflecting the Climate Emergency we are facing; and
- 1,800 Council trees planted per year along with additional community led Arbor day plantings.

Whilst investing in our community, I have also worked towards keeping rates as low as possible, with rate rises of only 1.91% and 2.32% over the last two years.

In the coming 12 months, I am looking forward to seeing the commencement of work on the Blackwood Community Hub which is due for completion in early 2023 providing a wonderful community asset for all generations to use. I will also continue supporting the services at the Blackwood Community Recreation Centre that helps over 4,000 people per week.

COVID Rates Rebate for affected businesses

Back in August 2021, I moved a motion to provide a 10% per cent rebate to businesses that suffered more than 30 per cent losses of trading revenues during the July lock down, this will now be a rebate that more businesses may want to take up given the broader and longer restrictions, now in place in response to Omicron.

Businesses are vulnerable to trading impacts from social distancing, such as reduced dining formats and this rebate will provide some relief from costs of doing business.

Your Fire Plan

At this time of year, I would like to pay tribute to our firefighters, right across Australia, but particularly those in our local area. Their courage is a great statement and I think we all acknowledge their bravery.

I am also heartened that most residents have a fire safety plan. Most residents are planning by:

- Checking regularly on the CFS warnings and incidents webpage, for fires on very high and catastrophic fire risk days.
- Considering moving out on catastrophic fire days, especially for children, the elderly and people with illness or disability.
- Coming up with a plan on when to leave, where they will go and how they will get there.

Blackwood Rec Centre

After months of hard work by the Blackwood Rec Centre, I am pleased that I was able to support them to get a great result from Department for Education, which has agreed to pay 50% of structural maintenance costs, in partnership with Mitcham Council, that pays the other 50%.

In the next few months, I look forward to a new long-term lease being signed by all parties giving certainty to the centre.

Overton Ward**Cr Katarina Steele**

Telephone:
0432 010 569

ksteele@mitchamcouncil.sa.gov.au

Happy new year! And a safe one. I try to be optimistic and believe those who say that there will be no fourth year of the pandemic.

The Adelaide East Herald published in December an article by the Mayor of Unley, Michael Hewitson, entitled: Is 31% tree canopy a lost cause for inner metro Councils? He gives data about tree loss, specifically on private properties. "Each year more than twice as many trees are removed than new trees planted." He is seeking the approval of the Minister Josh Teague for an Unley tree canopy offset land fund to buy land to plant trees on.

In Mitcham, just as with our neighbours, many of the new developments come with a total clearance of the land and leave not enough space for tree planting, so the loss is permanent. And we are running out of public spaces for planting too.

Tom Morrison, Joanna Wells, and Craig Wilkins made a comparison of Australia's tree laws. Just to be in the picture, here are some examples of the population density per square kilometre: in Mitcham is 893.1, Burnside 1,664.9 and Unley 2,747.5.

By the current Regulated and Significant tree protection in SA the most common way to define a protected tree is the trunk circumference. Let's have some examples when a tree can be removed. In our state, a Regulated tree can be removed if the trunk circumference is 2m or more when measured 1m above the ground. For a Significant tree, if its trunk circumference is 3m or more measured 1m above the ground. On the other hand, the City of Port Phillip (VIC) requires a circumference of 150cm at 1m from base, Darebin City Council (VIC) 100cm at 1.5m above ground, Burwood Council (NSW) 15cm at 1.4m above ground. That just gives you taste of the big differences between the jurisdictions and one of the causes why the tree canopy from above our heads is disappearing so fast. The 32-page study is full of surprising numbers and makes one think.

Let's see some other figures. I was looking for new information about the religion in the City of Mitcham. Because the results of the 2021 census are not yet released, here are the 5-year-old data: 15.3% are Roman Catholic, 11.1% Anglican, 3.2% Greek Orthodox, 39.4% have no religion. Baptists and Lutherans are 2.4%, 1.4% are Islamic, 1.3% are Buddhists and 1% are Hindu (7.1% did not answer the question on religion). Why mention this? One resident recently approached the Council with a request to organise an event – events for those who are not Christians. If we consider equality, that's a fair proposal. Add multiculturalism, an open mind, tolerance, the will to learn about and from each other, and the decision is not so hard. And if we are speaking about money, the sum of more than \$40,000 for Christmas carols comes from a pot to which contribute believers and atheists, Christians and non-Christians. So, what do you think?

I would like to hear from you, email me
ksteele@mitchamcouncil.sa.gov.au

Babbage Ward**Cr Yvonne Todd**

Telephone:
0418 891 097

ytodd@mitchamcouncil.sa.gov.au

Best wishes to you, your family and friends for the year ahead. A quiet, calm year to reflect and respect, would be a good year.

Babbage Ward will have many positive projects this year, such as Australia Day celebrations at St Marys, the development of the Pasadena Community Centre, new roads, footpaths, reserve upgrades and opening of the Pasadena biodiversity corridor. I am hoping we will be successful in a bid for funding Sturt River stabilisation and revegetation adjacent to Riverside Drive Reserve, Bedford Park, an idea suggested by Bedford Park Residents Group last year.

Election priorities for Babbage

2022 will be interesting and demanding, with State, Federal and Local government elections on the way. Babbage sits across Boothby (Federal) Elder, and Davenport (State) electorates and Council always provides candidates with a list of prioritised projects needing funding. For Babbage, the Boothby priorities are development of the Pasadena Community Centre and Sturt River Linear Trail, while in Elder, the priorities are the Pasadena Community Centre, CC Hood Reserve enhancements, improvement to Brookman Ave, St Marys Precinct, and a toilet at Shepherds Hill Reserve car park. In Davenport, the priorities are improvements for the Sturt River Linear Trail at Bedford Park and development of Sutton / Burbank precinct in Bedford Park.

CC Hood Masterplan

It is essential that Council listens to the community perspective before any developments are made in the CC Hood Reserve at Eliza Street, Panorama. Early this year, I spoke with Mr Neil Baron, spokesperson of the Panorama Clapham Community Group about how to create community input, to progress the master plan for the reserve. I met with Neil and Council, to understand the best approach for Council to progress this, and Neil indicated he could help by sending out an informal community survey through the PCCG network to start us off.

Elector Representation in Council wards

In late December the Electoral Commissioner advised that from November 2022, Council will have changes in the number of ward councillors (down from 13 to 12), with 6 wards each represented by 2 councillors. Babbage Ward area will increase to include Lynton and part of Eden Hills. This was a significant piece of work for Council with 9 reports, and 2 public consultation phases. It shows that councillors take your representation seriously. Thank you to all those respondents who took time to read the documents and provide feedback.

Australia Day

To keep our community safe the Australia Day ceremonies will be invitation only however you can watch online the City of Mitcham Citizen of the Year Awards ceremony, the presentation of grant recipient certificates and a citizenship ceremony for our newest citizens. The ceremonies will begin with a Kaurna Elder delivering a Welcome to Country and Smoking Ceremony. Ceremonies will commence at 8.30am and 10.30am. The online link will be available on our website. I hope to see you online as we all reflect, respect and celebrate!

Please call or email me if you have council issues to discuss.

Craigburn Ward**Cr Darren Kruse**

Telephone:
8278 1779

dkruse@mitchamcouncil.sa.gov.au

Happy new year everyone. I trust you all had a good Christmas break with friends and family.

A lot has happened since my last column in November. I'm pleased to report that in December Council overwhelmingly supported my compromise motion that both the **Craigburn Farm bushfire exits** at Star Lily Street and Verdelho Street will be opened, but with gates that are **unlocked**. This will allow emergency egress, while still preserving the quiet cul-de-sacs. Appropriate signage, kerb works and new gates will be installed in time for next bushfire season.

The building projects continue! We have now broken ground on the new \$12M **Blackwood Hub**. Building will take most of this year, with an opening due early next year. The sale of the adjacent gravel car park behind Foodland will now allow a new shopping mall to be built, linking the new Hub with Foodland. No more walking through the drain between the buildings!

This winter, **Hewett Reserve** will no longer be a soggy bog with all of the new drainage works complete. The new clubrooms for the **Sturt Lions** at Karinya Reserve are well progressed, while we continue to work through finding a suitable design to combine the Eden Hills Scouts and the Rotary shed into a brand-new facility on Karinya. It would be easy if we cut down hundreds of endangered grey box trees willy-nilly like Department of Transport can, but we don't. We continue to oppose the **James Road roundabout** (voting to deny access to build bypass bike trails) while the Department tries to get approval from the Native Vegetation Council. I'm delighted, that after 2 years of debate, Council unanimously voted in December to adopt the five-flagpoles design at the roundabout, with the **Aboriginal Flag** to fly on a permanent basis. With the full support of the RSL, the heart of our community will finally come into the 21st Century.

Looking ahead, on the **Blackwood Rec Centre**, we are waiting on final formal agreement from the Minister, but it looks like Council's proposal that 50% of the building maintenance be paid by the Department will be agreed. A new long-term lease should then follow.

On the **Mitcham Community Solar Program**, the successful tender will soon present their proposal to the Independent Audit Committee before the proposal comes to the chamber for a vote. Vetting the financial business model will give certainty on this incredibly exciting opportunity for all residents to eliminate their electricity bills at no upfront cost. Stay tuned.

Our Dog and Cat by-law will be refreshed this year, with Council to decide if there should be a **24/7 cat confinement** in place, like Adelaide Hills Council. We must stop the nightly carnage of our native wildlife.

Finally, we now start the process towards the final budget of this Council. Deciding what will be funded while keeping rate rises down (an average of 2.64% so far) is always challenging. The twice-defeated ex-Mayor oversaw rate rises of 3.1% on average, 15% higher!

<https://bit.ly/CrKruse-Newsletter-Subscribe>



Volunteer bus drivers Lindsay Bowey and Ken Bonython present a defibrillator to City of Mitcham Transport Coordinator Dennis Murphy.

Donation to boost safety on Mitcham Community Buses

Mitcham Community Bus passengers are in even safer hands thanks to a donation by the Rotary Club of Brownhill Creek.

The Club has donated two defibrillators to be installed in the two Community Buses that operate a door-to-door service across the City of Mitcham.

The Club donation will be a lasting legacy for the community after the club disbanded in November after 41 years.

Club President and volunteer driver Lindsay Bowey suggested the idea after hearing about the importance of defibrillators during a first aid course with other City of Mitcham volunteers.

"We learnt that defibrillators are now available everywhere, from shopping centres

to sporting clubs," Lindsay said. "I thought, here we are transporting elderly people on a weekly basis without one close at hand."

Lindsay approached the Board who agreed the defibrillators would provide a valuable service to the community.

City of Mitcham's Community Buses travel weekly to Blackwood, Mitcham, Pasadena and Castle Plaza shopping centres and monthly to Westfield Marion. Fully trained and accredited volunteers drive buses, assist passengers and help with walkers, trolleys and shopping bags.

For more information on joining the Community Bus as a passenger or volunteer, please contact Dennis Murphy on 8374 7791.

Australia Day Reflect, Respect and Celebrate

City of Mitcham residents who make a difference to our community will be recognised on Australia Day Wednesday 26 January.

To keep our community safe City of Mitcham's Australia Day Celebrations will be invitation only however we invite you to join online to watch the City of Mitcham Citizen of the Year Awards ceremony, the presentation of grant recipient certificates and a citizenship ceremony for our newest citizens.

The ceremonies will begin with a Kaurna Elder delivering a Welcome to Country and Smoking Ceremony.

Australia Day is a great time to Reflect, Respect and Celebrate!

The Australia Day Ceremonies will commence at 8.30am and 10.30am. For more information and the online link visit www.mitchamcouncil.sa.gov.au/australia-day

LIVESTREAM ONLINE

Australia Day



CITY OF MITCHAM

Assisted by the Australian Government through the National Australia Day Council.



Australia Day
Reflect. Respect. Celebrate.

Message from the Mayor

Dr Heather Holmes-Ross

Telephone:
0401 841 000

hholmes-ross@mitchamcouncil.sa.gov.au



What a start to 2022! It seems that COVID-19 has finally caught up with us as the Omicron tsunami sweeps across our state and through our community, after two years of anticipation, now is the moment. Cases numbers are increasing and, we are told, will continue to do so for a while yet. I am deeply saddened by the suffering and grief that our community will inevitably endure, but ever so thankful that we have had the opportunity to prepare. Our community is now well versed in behaviours that minimise COVID-19 transmission, such as social distancing, hand washing, mask wearing and sanitising - skills that I certainly didn't possess at the beginning of 2020. We also know how to isolate, quarantine, and work from home. We've learned to be aware of our wellbeing and look after ourselves. We know that vaccination provides protection against the more severe COVID-19 symptoms, and because 94.8% of the 16+ population are double vaccinated (at time of writing), those who are unvaccinated are also afforded a degree of protection. For all these reasons our community is well placed to weather the Omicron storm, notwithstanding the hardship individuals will endure.

At council our priority is to continue to deliver services to the community with minimal disruption, although the way we deliver some services may change. We will endeavour to keep the community well informed. Obviously, we are prioritising the delivery of essential services, such as waste collection and community safety, with staff already working and planning to ensure these are maintained. Administration have moved quickly to comply with the Premier's advice to work from home if possible, understanding the importance of lowering the curve. Although it is likely that many of us with contract COVID over the next few months, we need to spread the cases out so that we don't overwhelm our health services. So, we have postponed several events and our full council meetings and briefings will be conducted virtually for the immediate future. To this end I have suspended my open community forum, "Share with the Mayor". I remain committed, however, to being available to my community and encourage you to contact me by phone: 0401 841 000, email: hholmes-ross@mitchamcouncil.sa.gov.au or mail: PO Box 21, Mitcham Shopping Centre, Torrens Park SA 5062, if I can be of assistance.

At the beginning of the pandemic, I was in awe of the keen sense of community that developed as we worked together to protect ourselves and each other, and particularly our more vulnerable residents. As we move through the current phase it is my hope that we rediscover the kindness and camaraderie which was so tangible in those early days. I wish each and every one of you the very best for the coming weeks and thank you, in anticipation, for your patience and understanding. We (our family, friends, neighbours, council and local businesses) will undoubtedly weather the omicron storm, but will do it so much better, together.

This article may contain personal views or opinions, and may not necessarily represent the formal position of the Council.

Wednesday 26 January 2022 | 8.30am & 10.30am