

# Mitcham Integrated Transport Plan (ITP)

Elected Members Information Session

16 November 2021



CITY OF  
MITCHAM

# Purpose

- Provide information on the draft Integrated Transport Plan (project FY 2021/22)
- Discuss opportunities and key focus areas
- Revised focus areas
- Discuss community engagement approach and seek members feedback
- Information on next steps and project schedule



CITY OF  
MITCHAM

# Around the room ....

Q – What should be our approach to the community engagement? Options and their costs to be discussed.



CITY OF  
MITCHAM

# Session Outline

Gandhi

Presenter : Satyen

- Introduction
- 'Recap' of previous workshop/s
- Strategic context – our ITP, where it sits?
- Why do the ITP?
- Framework of the Plan – Vision, Objectives/Focus Area and Actions
- Community Engagement – community stories, experiences and aspirations
- Next steps and 'around the room'



CITY OF  
MITCHAM

# Previous workshops - a refresher

The image shows two presentation slides side-by-side. The left slide has a blue background with white text. The right slide has a green background with white and red text and a cityscape image.

**INTEGRATED TRANSPORT PLAN**  
Designated Informal Gathering  
4 August 2020  
Presented by the City of Mitcham

**CITY OF MITCHAM**  
INTEGRATED TRANSPORT PLAN  
**BEYOND 2020**  
.....  
Short term actions. Long term vision  
**DRAFT**

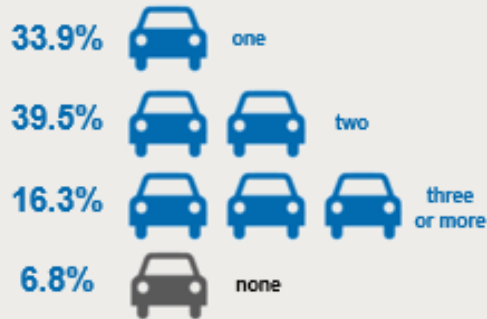
infraPlan



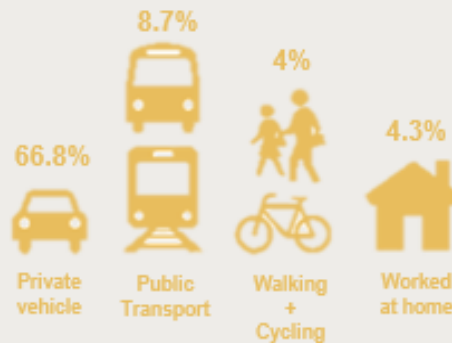
# Previous workshops - a refresher

## CITY OF MITCHAM TRANSPORT OVERVIEW

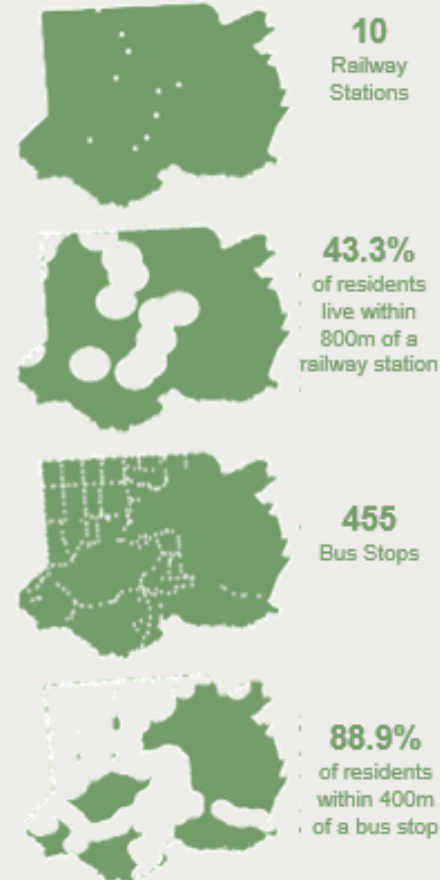
### Vehicle Ownership



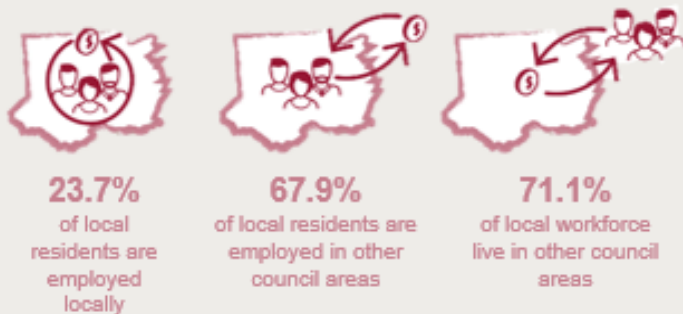
### Journey to Work



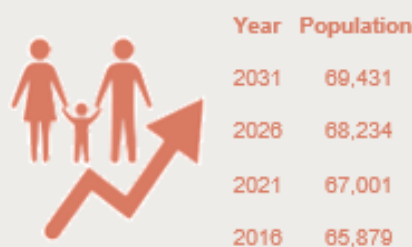
### Public Transport



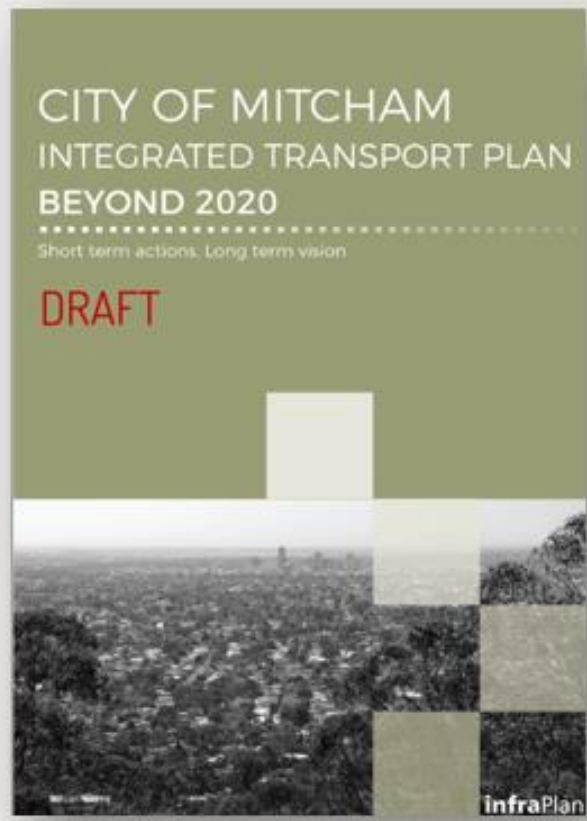
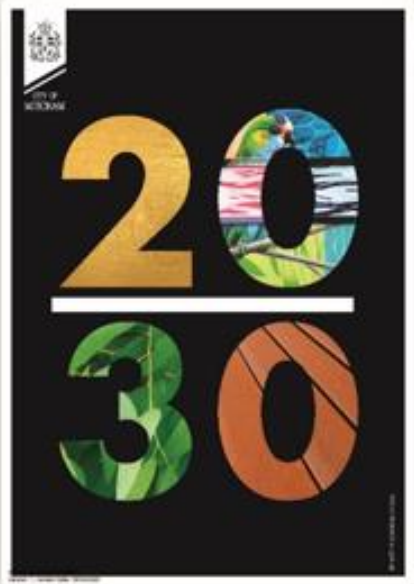
### Workforce Migration



### Population Growth



# Previous workshops - a refresher



LAND USE AND DEVELOPMENT



ROADS AND ECONOMIC MOVEMENT



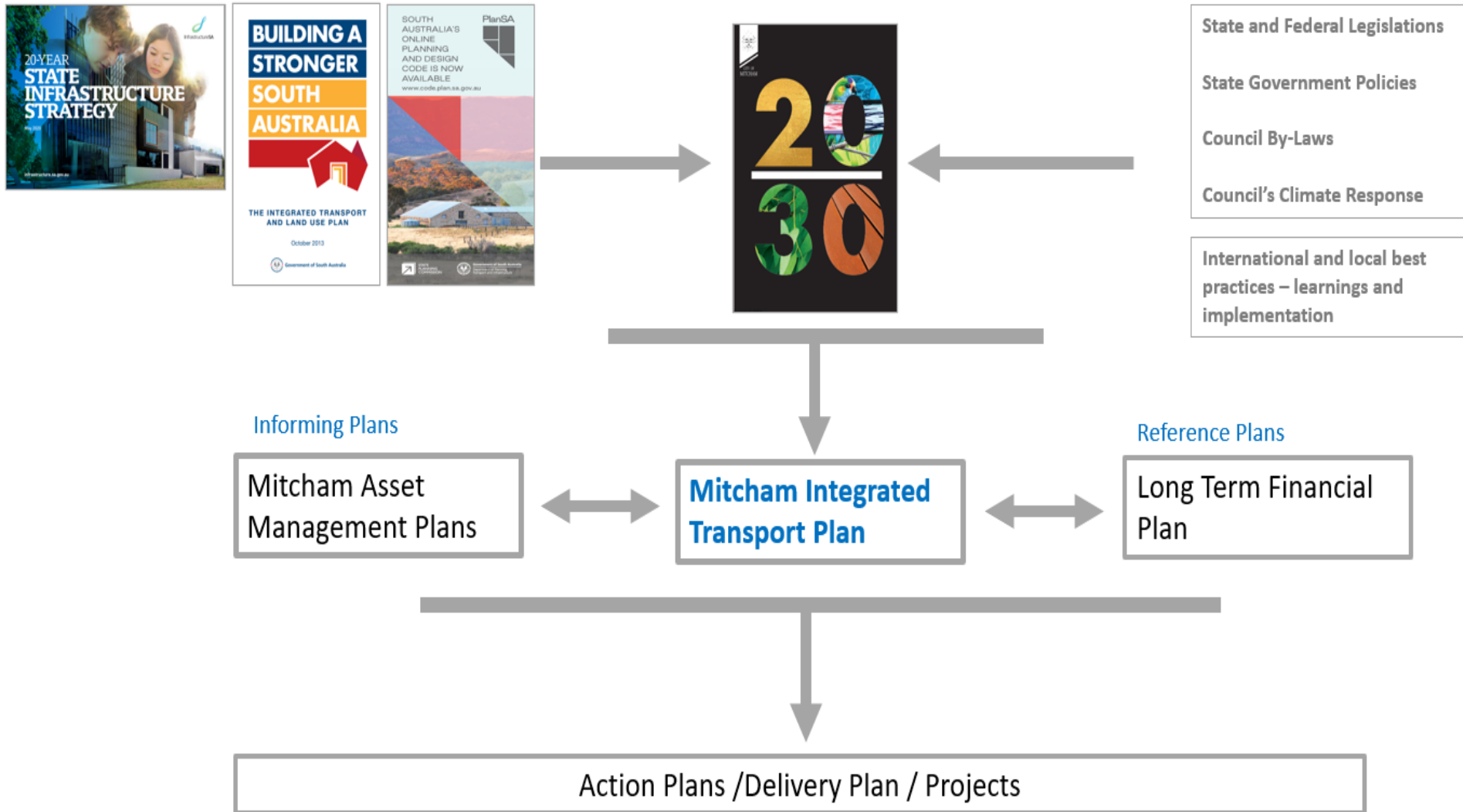
COMMUNITY AND PUBLIC TRANSPORT



WALKING AND CYCLING



# Strategic context





# Why invest in an ITP?



**Community impact and aspirations**



**Efficiency/maximising the future opportunities**



**External factors and technological advancements**



**Modal shift for right sustainable outcomes**



**Strong advocacy to the State authorities**



CITY OF  
MITCHAM

# ITP framework - 'How' the plan will be delivered?



# ITP framework - ‘**How**’ the plan will be delivered?

Mitcham ITP is being developed to support the strategic direction set by Council's ‘Mitcham 2030’ plan.

## Goal/Strategic Objective of the ITP

**We are a City that is connected to places through an integrated, efficient and people friendly transport network for motorists, cyclists and pedestrians.**

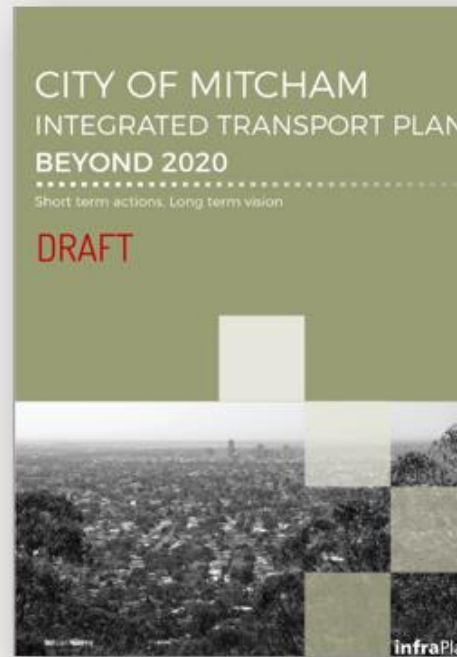
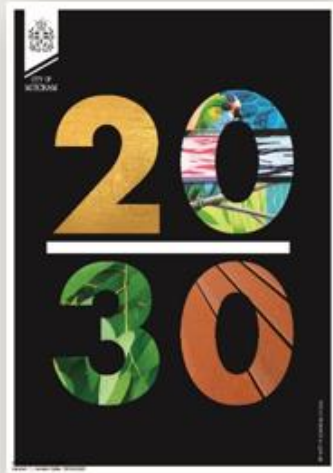
**Mitcham 2030**

**Theme 1.1 Transport Network**



# Focus Areas /Themes

## Previous workshops



# Focus Areas

- **Transport and Development**

We have an integrated transport network that responds to changing land use, community and demographic trends. Transport networks achieve functional levels of service as a result of development

- **Road Safety**

We have a safe, sustainable, and accessible road transport network that preserves and enhances the standard of living of our communities and visitors, and meets the demands of our business, educational institutes and residents.

We have a transport network that is safer for all modes of transport and create safer neighbourhoods.

- **Community and Public Transport**

We have diverse and integrated community and public transport options that meet current needs, and strategically accounts for future demands.

- **Walking and Cycling**

We have an environment that makes cycling and walking attractive transport modes for local, neighbourhood and district-wide trips. We have recreational cycling and walking networks which promote healthy living



CITY OF  
MITCHAM

# Focus Areas

- **Parking Management**

Our parking management approach is proactive and supportive of local land uses while providing equitable access. It responds to our community's needs now and in future.

- **Technology (smart solutions)**

We are positioned to benefit from technological advancement through use of smart technology in our infrastructure and transport management solutions. We recognise the evolving trends within the society and industry and respond to them in a manner that is advantageous for our community and economy.



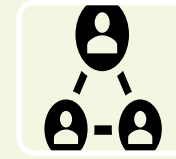
CITY OF  
MITCHAM

## Community Engagement – *its 'our' Transport Plan*

- Community involvement and ownership – key for success
- High community interest but lack of strong community participation in the past
- Community engagement approach and process
- Methods of community engagement – focus groups, industry expert groups, 'Drop-in' sessions, online feedback and written surveys as community centres/libraries
- ITP through community 'lens' - Listening to community stories and explaining what ITP means



# Community Engagement approach...



## Option 1

**Minimal Engagement  
(no cost implication)**

## Option 2A or 2B

**'Smart Engagement'  
(Moderate cost  
implication)**

## Option 3

**Deep community  
engagement (High  
cost implication)**



CITY OF  
MITCHAM



# Community Engagement approach....

## Option 1 – Minimal engagement (no budget impact)

- A basic online survey engagement
- Drop box at community centres for written surveys
- Minimal resource implications
- Low costs implications – no additional costs



CITY OF  
MITCHAM

# Community Engagement approach....

## Option 2A – ‘smart engagement’ (RECOMMENDED)

- In-house community engagement
- Online surveys open to all
- Targeted written surveys
- Drop-in sessions at shopping and community centres
- 3 X facilitated workshops with key stakeholders and industry experts
- High level of promotion through digital media and social platforms and local newspapers
- Update the ITP report (technical)
- Moderate costs implication for good community engagement - \$20K - \$25K

## Option 2B- Option 2A + Add community engagement expert report:

- All of above plus an expert led community engagement report and review
- \$40K - \$45K

# Community Engagement approach....

## Option 3 – High investment and deep engagement

- A dedicated community engagement resource/consultant
- High number of community surveys (written and online)
- Long engagement period – 6 months
- Several community workshops
- Several one on one meetings with community members and stakeholders
- High cost implications - \$60K to \$80K

## Next steps

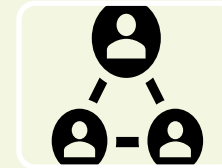
- January and February 2021 - Council report seeking consultation on the draft ITP and associated budgeting
- March-May 2022 – Community engagement through online portal, questionnaire surveys, focus groups and ‘drop –in’ sessions
- May-June 2022 – Review the draft, amend ITP
- July 2022 – Final ITP for Council endorsement
- August 2022 – Community information distribution and release of the Plan



CITY OF  
MITCHAM

# Around the room....

## Community engagement approach options and your views



**Option 1**  
**Minimal  
Engagement (no  
cost implication)**

- Only option within the existing budget
- Not in line with community expectations
- Minimal impact on timing

**Option 2A or 2B**  
**'Smart  
Engagement'  
(Moderate cost  
implication)**

- \$20 - \$25K
- Meets community expectations and achieve 'buy-in'
- Engagement with all cohorts and age groups
- Option 2B - \$40K - \$45K
- Moderate impact on timing

**Option 3**  
**Deep community  
engagement (High  
cost implication)**

- \$60K - \$80K
- 'Concierge approach'
- Proactive community involvement in ITP
- High community participation
- Dedicated resource
- High timing implications