

Draft Tree Plan

Daniel Baker - GM Engineering and Horticulture

Mason Willis - Manager Open Space

Chris Tozer - Senior Arborist

David Sheldrick - Tree Establishment Officer

Structure

ENGINEERING & HORTICULTURE



- Capital Delivery
- Complex Tree Management
- Volunteer coordination
- Trail and BMX management
- Weed and Native Veg management
- Strategic Planning

Objectives

- 1) Recap on the **draft Tree Plan**, and **why** it is needed
- 2) **Understand content** of the draft Tree Plan
- 3) **Next steps** - Council Members and Community

*Provide you with a **draft copy** of the draft Tree Plan!*

The Tree Plan – Quick Recap

- Council information session on **31 August 2021**
- Revision of the Tree Plan undertaken
- **Colonel Light Gardens** will be a separate document to this city wide Draft Tree Plan
- Community Engagement

Why do we need it?

Tree provision is becoming more challenging:

- a) Climate emergency declared – **October 2019**
- b) Legislative environment (Landscapes SA Act 2019 vs. Utilities)
- c) Development / urban infill

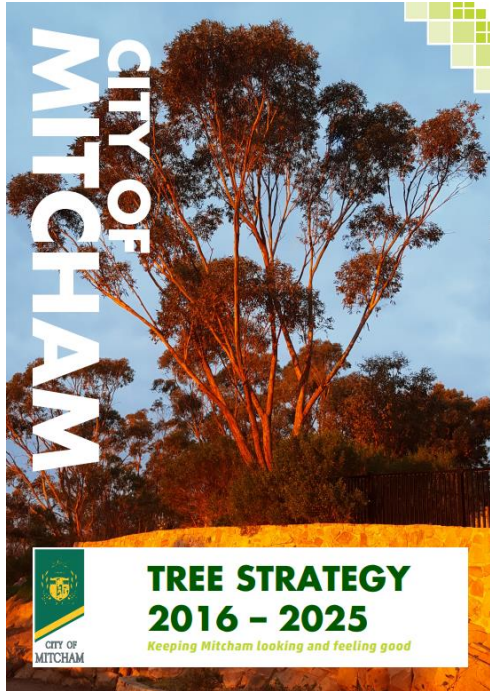


Why do we need it?

Trees are valued by our community



Tree Management Documentation



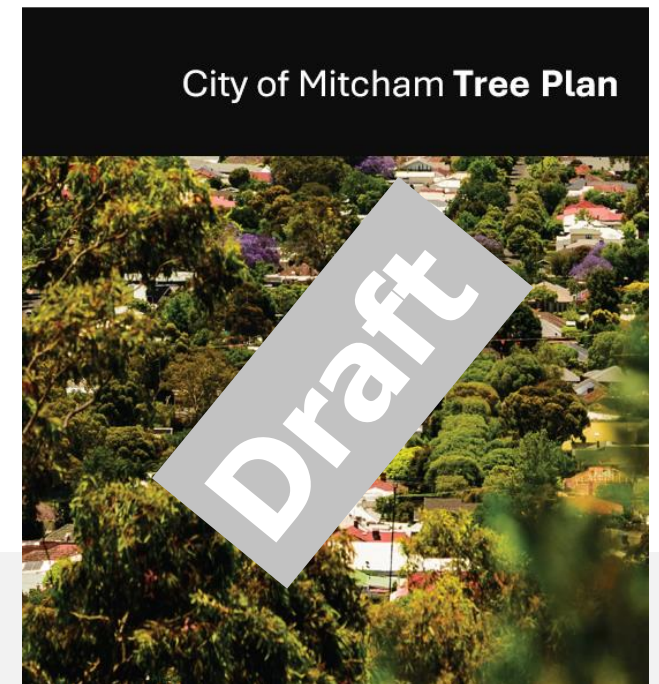
Strategic direction for enhancing our urban forest

Tree Policy

| | |
|---|-------|
| Infrastructure | 14.30 |
| TREE POLICY | |
| PURPOSE | |
| This policy provides guidance for the integrated management of Council's street, park and reserve trees to achieve a sustainable and safe urban forest. | |
| DEFINITIONS | |
| An Urban forest is defined as the total vegetation growing in or in close proximity to urban areas; it includes all local indigenous, planted and self seeded trees, shrubs and ground layer plants, whether indigenous, native or exotic, growing in streets, parks and reserves. | |
| A tree is defined as a woody plant having one or more erect stems or trunks, a crown of foliage and a height of 5m or more at maturity. | |
| A Park refers to public open space developed primarily for amenity and recreation. | |
| A reserve is typically public open space managed in a natural state to conserve biodiversity and for other environmental benefit, though accommodating low levels of informal recreational use. | |
| RATIONALE | |
| The urban forest provides significant community, environmental and economic benefits. Considerable investment is required to provide these benefits and to minimise Council's exposure to risk. Through integration of tree management with established urban development and civil works disciplines, this policy will assist the continued provision of these benefits. | |
| GENERAL PRINCIPLES | |
| Management of Mitcham's street, park and reserve trees will be based on professionalism, open communication, consistency, quality and best practice. It will enhance the character, desirability and sustainability of the City through: | |
| <ol style="list-style-type: none">Community Consultation and Support By effectively consulting, communicating with and engaging staff and the community, Council will ensure that the City's street, park and reserve trees and urban forest outcomes remain relevant, effective and efficient with regard to both short and long-term goals.Cultural and Environmental Suitability Mitcham's street, park and reserve trees will be matched to the City's cultural, natural and urban characteristics to enhance amenity, ensure financial efficiency, maintain biodiversity and improve environmental performance. | |

The **Principles** of how we manage trees at the City of Mitcham

The **'what'** species, the **'where'** and the **'why'** we will plant



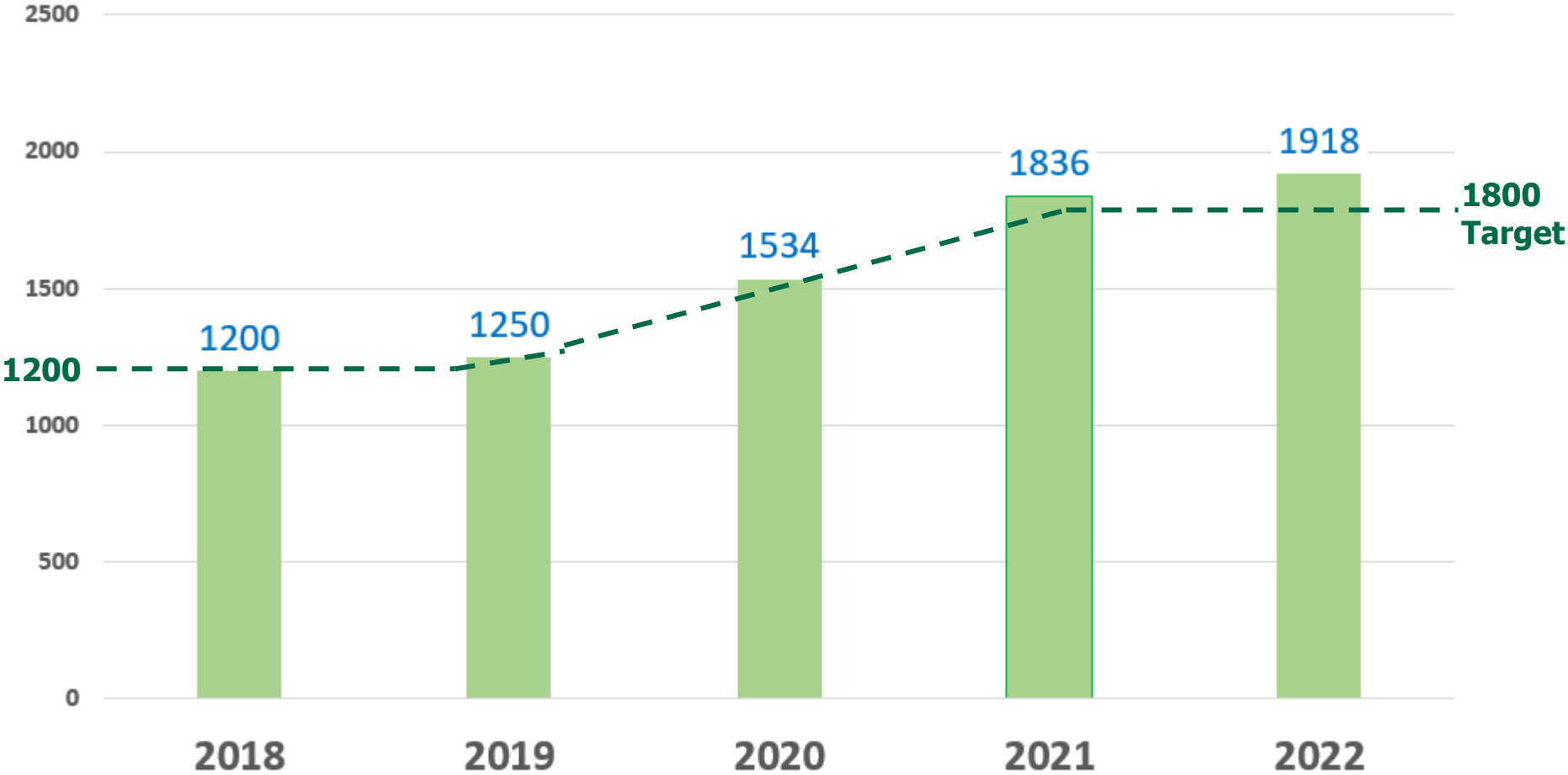
Why do we need it?

- A gap in our approach
- Operational guidance
- Clarity for the community – **what, where and why?**
- Confidence in our tree planting activities
- Why is it this format?



The City of Mitcham Tree Plan

The plan will help us deliver on past and ongoing successes:



Accelerated Tree Planting Program

Content

Introduction

Benefits and Challenges
associated with Trees

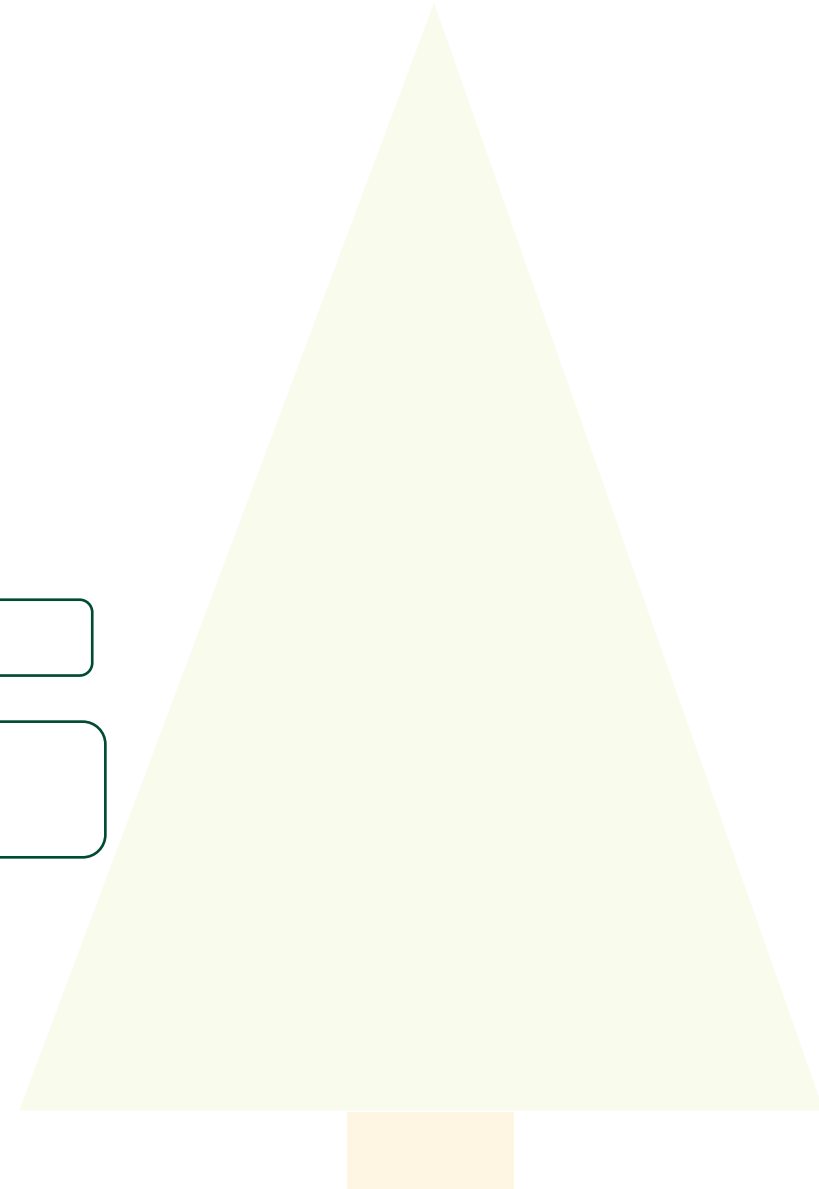
The Tree Character Precinct Plans and
Suburb Tree Planting Guide

Key Stakeholders of the Tree Plan

Internal and External Policy and Legislation
Considerations

Tree Risk Management

Our Tree Asset Registers



Introduction

Benefits and Challenges
associated with Trees

Key Stakeholders of the Tree Plan

Internal and External Policy and
Legislation Considerations

The Tree Character Precinct Plans and
Suburb Tree Planting Guide

Tree Risk Management

Our Tree Asset Registers

a) Appreciation of our urban forest (species and approximate populations)

a) Why we value trees

And what are the challenges we have?

Introduction

Benefits and Challenges associated with Trees

Key Stakeholders of the Tree Plan

Internal and External Policy and Legislation Considerations

The Tree Character Precinct Plans and Suburb Tree Planting Guide

Tree Risk Management

Our Tree Asset Registers



Rules and Laws governing tree species near utilities

Tree Plan Considerations



Opportunities for green infrastructure/WSUD initiatives

Introduction

Benefits and Challenges
associated with Trees

The Tree Character Precinct Plans and
Suburb Tree Planting Guide

Key Stakeholders of the Tree Plan

Internal and External Policy and Legislation
Considerations

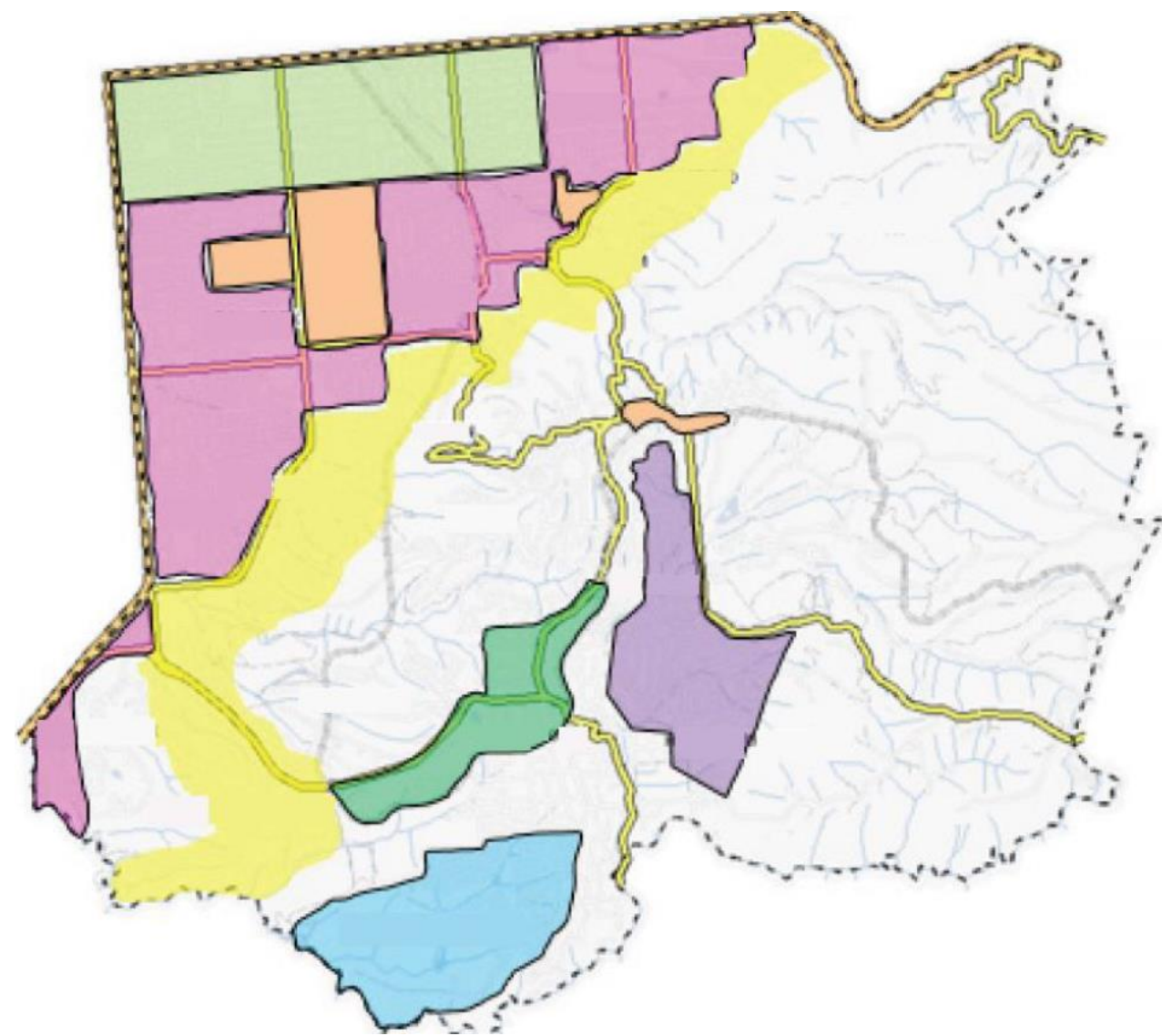
Tree Risk Management

Our Tree Asset Registers

Tree Precincts

The 2016 Tree Strategy
introduced a '**Tree
Character Map**'

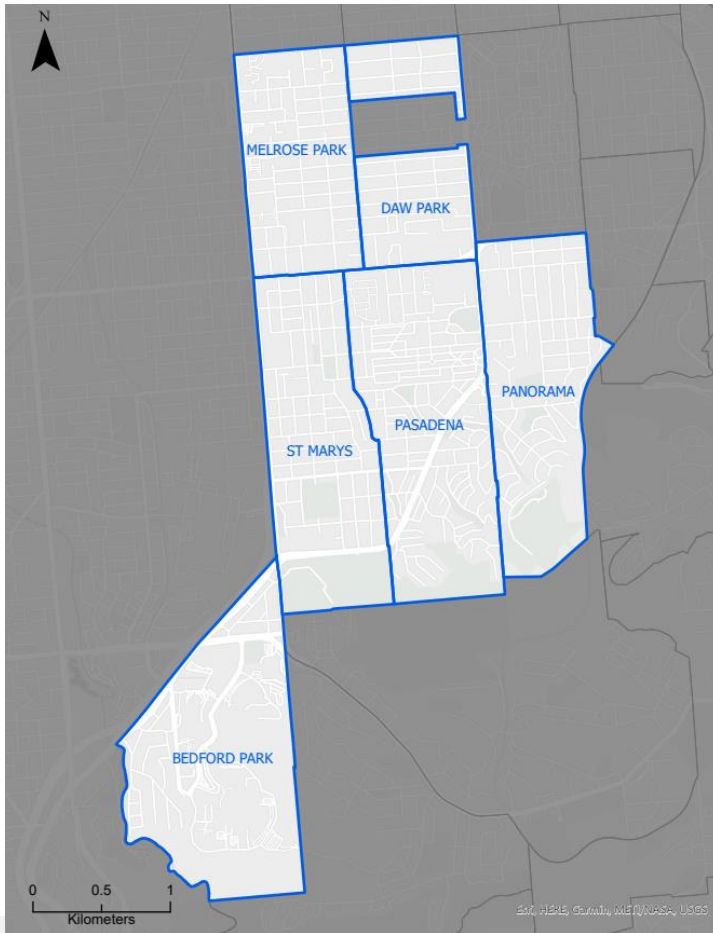
This has been utilised to
develop **7 Tree Character
Precincts** upon which we
can plan tree planting



How the Tree Plan will be applied

Street Level Constraints:

- Tree stock availability
- Rules and Regulations
- Specific site characteristics
- Previous success at this location



| |
|---|
| Current and future species for planting: |
| Wilga (<i>Geijera parviflora</i>) |
| Ornamental Pear (<i>Pyrus calleryana</i>) |
| Chinese Pistachio (<i>Pistachia chinensis</i>) |
| Red flowered mallee (<i>Eucalyptus erythronema</i>) |
| Grey box (<i>Eucalyptus microcarpa</i>) |

Tree Character Precincts

- Colonel Light Gardens



On 9 August 2022 Council approved the **Heritage Guidelines of the Public Realm**, that apply to works in CLG

Including tree planting

A separate Tree Plan for the suburb will be developed in conjunction with the **CLG Operational Plan**

Introduction

Benefits and Challenges
associated with Trees

The Tree Character Precinct Plans and
Suburb Tree Planting Guide

Key Stakeholders of the Tree Plan

Internal and External Policy and Legislation
Considerations

Tree Risk Management

Our Tree Asset Registers

- Government bodies
- Corporate Policy (Internal)
- Service Providers
- Others

- Local Government Act 1999
- State and Federal Acts
- City of Mitcham Strategic Plans and Policies



Introduction

Benefits and Challenges associated with Trees

The Tree Character Precinct Plans and Suburb Tree Planting Guide

Key Stakeholders of the Tree Plan

Internal and External Policy and Legislation Considerations

Tree Risk Management

Our Tree Asset Registers

- Tree Inspections
- Levels of Assessment

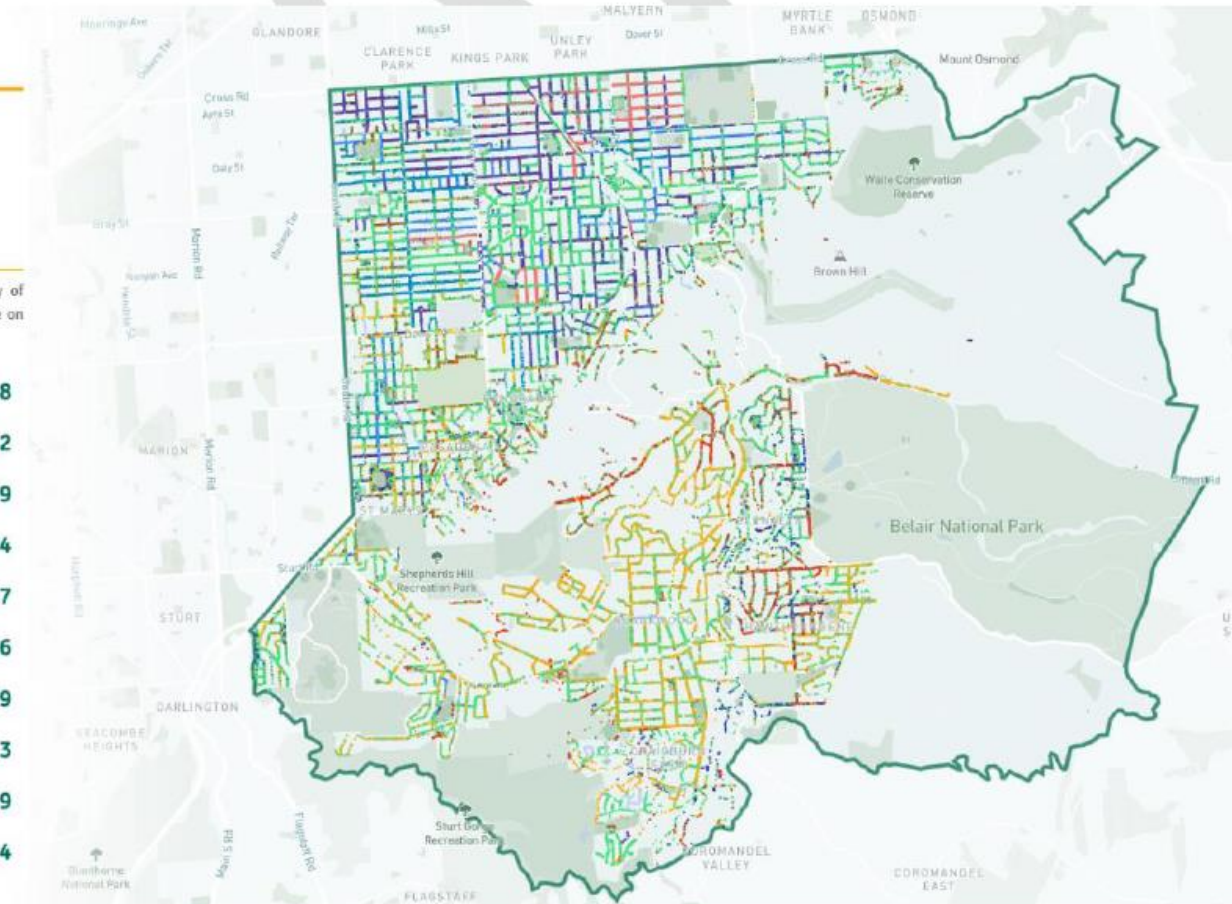
TOTAL TREES

58,437

TOP 10 SPECIES

Below are the Top 10 Tree Species found in the City of Mitcham, click on a Species below to see where they are on the map.

| | | |
|-----|--|-------|
| #1 |  Gum <i>Eucalyptus sp.</i> | 9,048 |
| #2 |  Jacaranda <i>Jacaranda pinusifolia</i> | 4,862 |
| #3 |  Grey box gum <i>Eucalyptus microcarpa</i> | 3,949 |
| #4 |  Golden rain <i>Februradenta paniculata</i> | 3,794 |
| #5 |  South Australian blue gum <i>Eucalyptus leucogylon</i> | 3,147 |
| #6 |  River red gum <i>Eucalyptus camaldulensis</i> | 1,916 |
| #7 |  Brush box <i>Lophozium confertus</i> | 1,829 |
| #8 |  White cedar <i>Melia azedarach</i> | 1,813 |
| #9 |  Weeping bottlebrush <i>Callistemon viminalis</i> | 1,739 |
| #10 |  Ornamental pear <i>Pyrus calleryana (seedling form)</i> | 1,654 |



Next Steps and Consultation

- Internal review and feedback
- Councillor Information Session
(Draft copy provided after the session)

- Your feedback -

- Report to Council for Decision to consult:
- Consultation period (pending Council endorsement):
- Review of Feedback
- **Finalisation and Endorsement of Tree Plan**

Completed

18 April 2023

11 July 2023

July 2023

August 2023

Late 2023



Arbor Day 2023



Info Coming soon!

Revitalise Reserves in St Marys

Dan Baker – GM Engineering and Horticulture

Mason Willis – Manager Open Space

Objectives

1) Overview of the **State Election Pledge Project**

2) Overview and Approach to Project

3) Community Consultation and Next Steps

St Marys, Babbage Ward

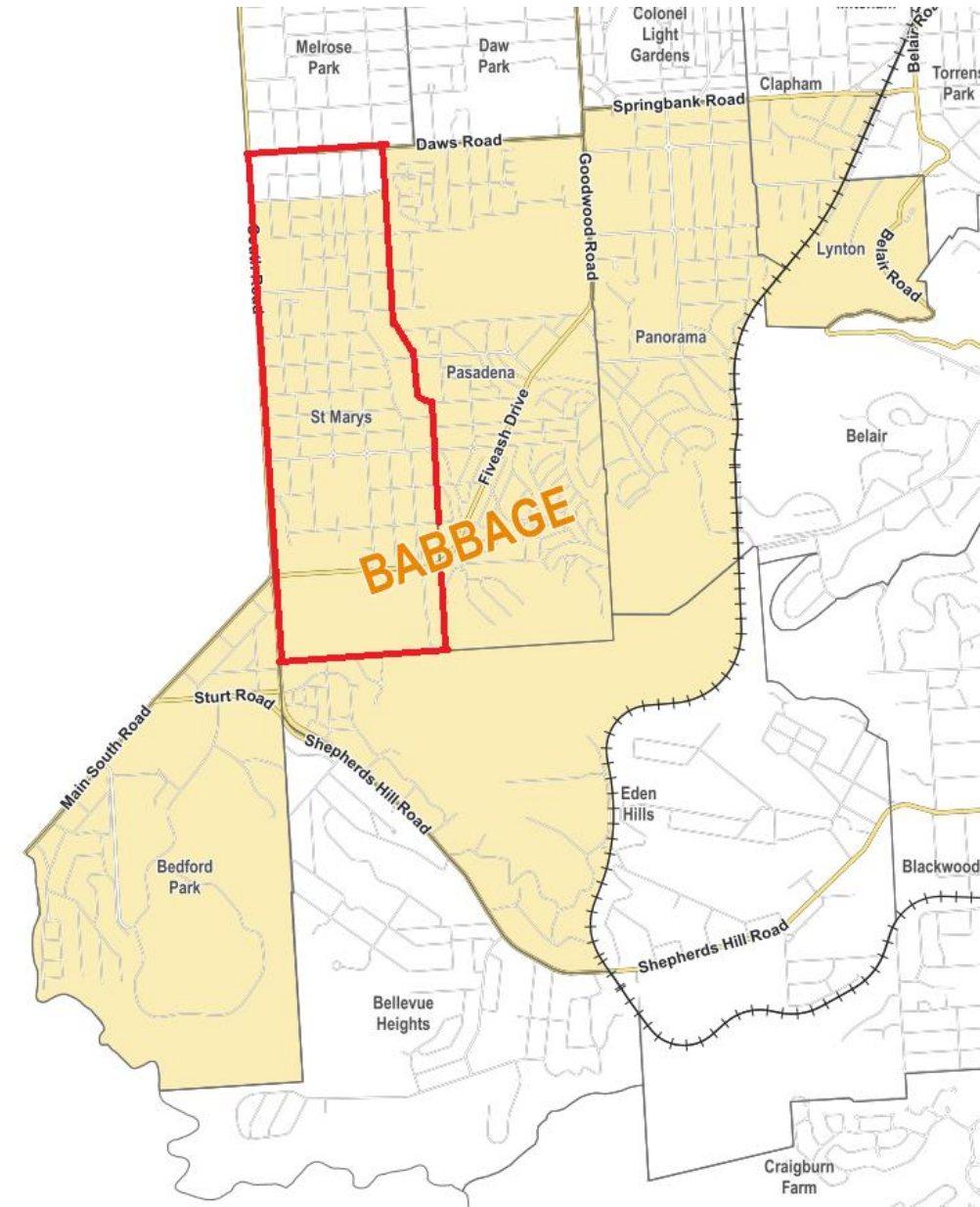
State Election Commitment 2022

Grant offer:

'To revitalise reserves in St Marys in consultation with the community'

\$520,000

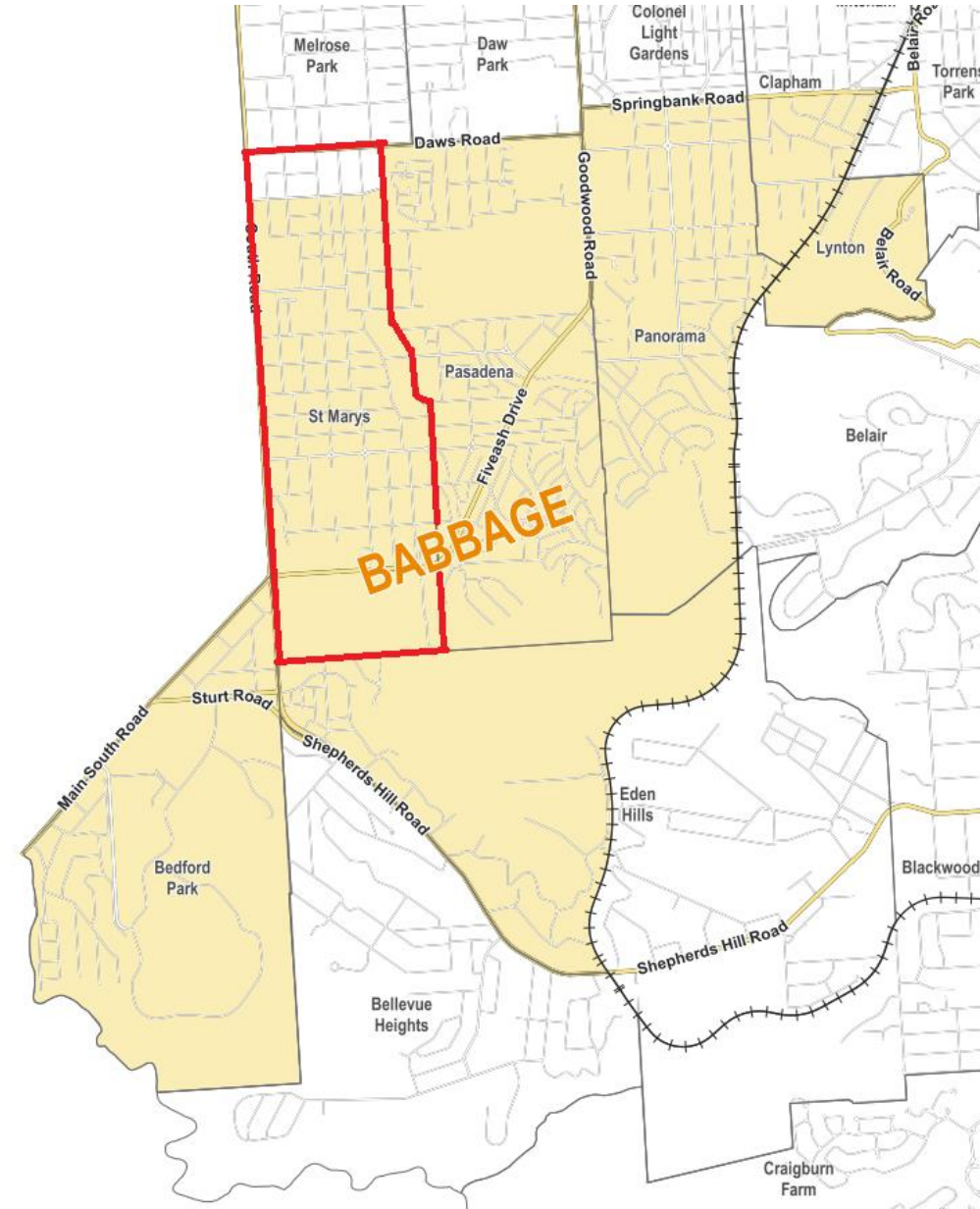
Timeline - 2022/23 and 2023/24



Grant Purpose

Grant Purpose:

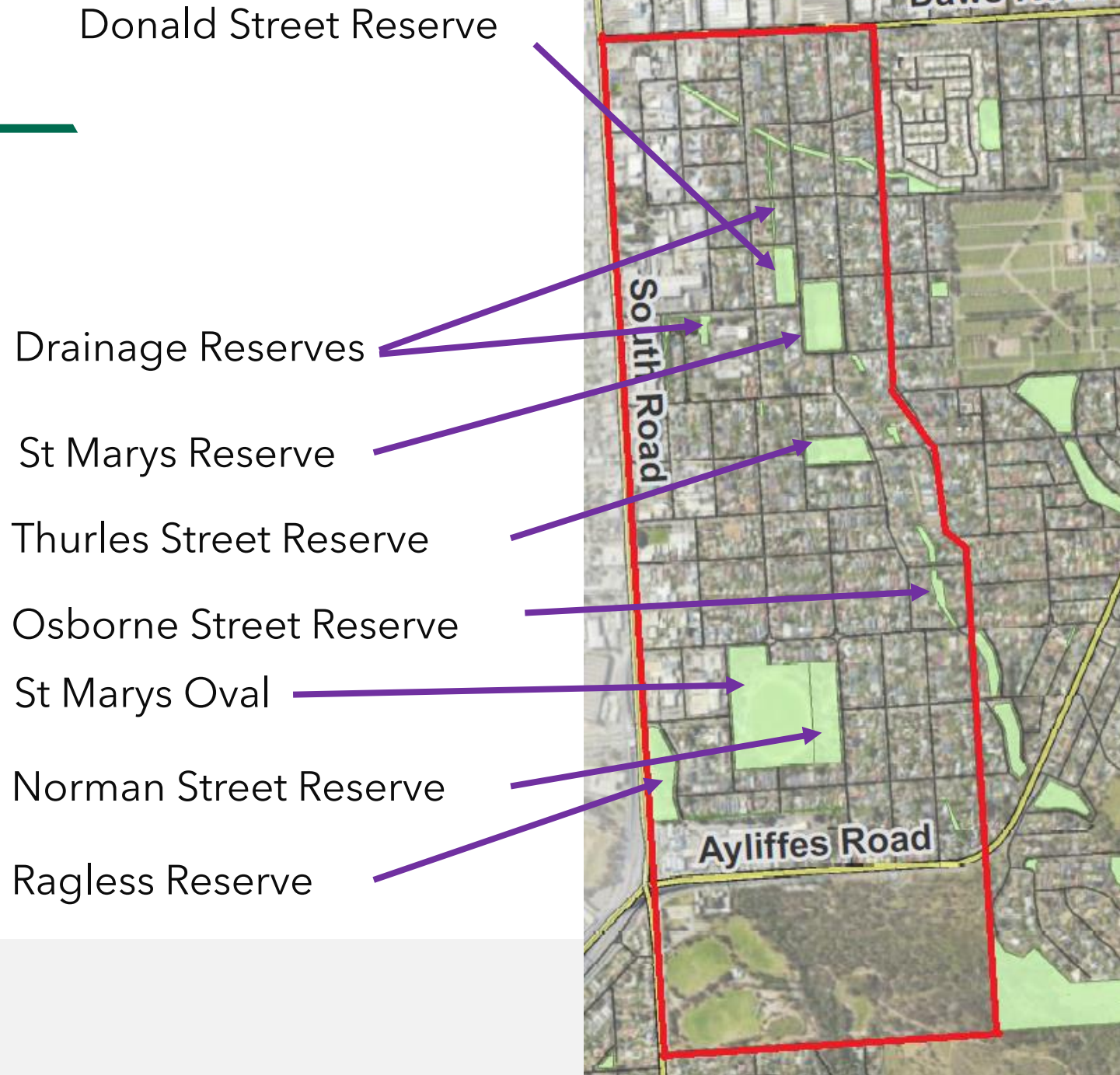
'to identify improvements for reserves informed with community input. This may consider potential ideas such as but not limited to a toilet at Thurles St Reserve, a dog park at St Marys Reserve, new equipment at Donald Street Reserve.'



Process

- A review of our reserves in the suburb
- What enhancement works have recently been undertaken?
- What enhancement works are in our plans?

Approx 12 hectares of reserve in suburb of St Marys



St Marys Enhancement Projects

- **Denis Street upgrade 21/22**

39 trees planted

32 TREENET inlets

450m² permeable paving

- **Thurles Street Reserve**

2 SEPS installed

2017 fruit tree planting

2022 **Arbor Day** - 300 understory

- **Ragless Reserve**

Stormwater works

Footpath and bike path
upgraded

- **Norman Street Reserve**

Stormwater detention ponds

Extensive tree planting

St Marys Enhancement Projects

Dorene Street upgrade

- Improve streetscape amenity and improve safety for all road users,
- Enhance walking and cycling connections
- Increase urban biodiversity
- Increase tree coverage and reduce the effects of the urban heat island
- Improve climate and water resilience

St Marys Enhancement Projects

Between the **1 April 2020 and April 2023**,
544 trees have been planted in St Marys as
part of the ongoing **Accelerated Tree
Planting Program**



Opportunity

Donald Street Reserve and St Marys Reserve

- Other reserves have had enhancements
- Grant agreement focus
- Previous greening idea - biodiversity focus
- Community consultation on these reserves



Proposed Approach

- St Marys wide consultation
- Community consultation focussed on opportunities for **St Marys Street Reserve** and **Donald Street Reserve**
 - What activities would the community like to see?
 - What environment would the community like to create?

Next Steps

- Council Report - **9 May 2023**
- Community Consultation - **May / June 2023**
- Community Feedback to then inform next steps...

Questions?





CITY OF MITCHAM