

# MITCHAM

ACCESSIBLE, HEALTHY & CONNECTED COMMUNITY ■ SUSTAINABLE CITY ■ DYNAMIC & PROSPEROUS PLACES ■ EXCELLENCE IN LEADERSHIP

## COMMUNITY NEWS



AUGUST 2023



### Ukrainian artists showcased

Mitcham's Gallery One is set to highlight the artwork of South Australia's Ukrainian community as part of this year's SALA Festival.

SEE PAGE 3

Co-curator Natalya Boujenko, Co-Curator Marie Trebilcock and artist Anna-Maria Zupancic.

DYNAMIC



4

City of Mitcham  
Annual  
Business Plan  
2023/2024

LEADERSHIP



8

Hear from  
your Council  
Members

SUSTAINABLE



11

Tree giveaway  
returns

CONNECTED



12

Dog friends  
group grows





## Mural celebrates art and community

Pasadena resident and artist Christina Adamczyk invited children, their parents and carers to help her paint a mural at Pasadena Community Centre last month.

The vibrant mural has added a splash of colour to the area where the Outdoor Children's Play sessions have been held on Tuesday mornings.

Christina says she offered to paint the mural after joining the group with her two-year-old daughter Florence.

"I live just down the road and I'm really excited to be part of the Pasadena Community Centre," she said. "I wanted to contribute something back to the community and I offered to work on a mural with the group."

She enjoys the Outdoor Children's Play session which encourages kids to spend time outside engaging in 'messy play'.

Christina is also hosting 'Somewhere Over the Rainbow', an exhibition of works she created with Florence, at It Takes a Village in Edwardstown in August.

She is looking forward to opening a café with her husband in Melrose Park in coming months.

The Outdoor Children's Play sessions are on hold during August.

Follow Christina on Instagram at [Christina.jane.artist](https://www.instagram.com/christina.jane.artist).

**For updates and to find out what else is on at Pasadena Community Centre, visit [www.mitchamcouncil.sa.gov.au/pasadena-community-centre](http://www.mitchamcouncil.sa.gov.au/pasadena-community-centre)**

## Follow our Public Art trail!

During South Australia's Living Artists Festival (SALA), why not explore City of Mitcham's Public Art trail?

The trail is now available on the free Visit Mitcham App. Download the app to explore Mitcham's public artworks including sculptures and installations and find out more about the permanent and temporary works that are dotted across our City.

Feature murals include 'Torrens Park Pump Station' at Belair Road, Mitcham, by Joel Van Moore, 'Together' by Elizabeth Close at Shepherds Hill Road, Blackwood, and 'Belair Water Tank Mural', Sheoak Road, Belair, by Seb Humphries.

You can also find installations including 'Return of the Gnomes' by Monica Prichard at CC Hood Reserve, Panorama, and 'Street Stories' by John Denlay on Gladys Street, Clarence Gardens.

Download the Visit Mitcham App from the Apple App Store and Google Play Store.



*Seb Humphries created a mural on the Belair Water Tank in 2021.*

## SALA in the Park returns

Centennial Park is set to host its 10th annual SALA in the Park sculpture walk featuring a series of large-scale sculptures dotted around the park this month.

Five temporary pieces including sculptures by Matt Turley, Lorry Wedding-Marchioro, Daniel Toonen, Peter DeMaria and James Hamilton will be showcased alongside the park's 15 permanent installations.

Centennial Park will also host the 3 Generations and Friend art exhibition in the Jubilee Complex Foyer from 1 to 31 August.

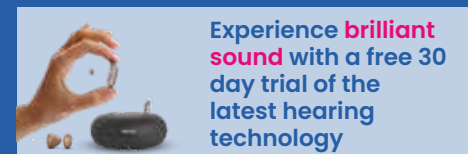
To explore the exhibition, download a map from [www.centennial.org.au](http://www.centennial.org.au) or pick one up from Wildflowers Café or the gift shop on site. Park sculptures are available for viewing from 7am to 7pm every day.

*Union, by Brent Quilliam, will be part of the exhibition.*



## Adelaide HEARING MITCHAM SQUARE

Book your FREE Hearing Test Today



Experience **brilliant** sound with a free 30 day trial of the latest hearing technology

- INDEPENDENT Advice from a Local Expert
- FULL RANGE of World's Best Brands
- NEW rechargeable, bluetooth & invisible solutions
- Wax Removal with Gentle Microsuction
- FREE Digital Hearing Aids for Eligible Pensioners & Veterans



8357 2290

[adelaidehearing.com.au](http://adelaidehearing.com.au)



## New citizens welcomed

City of Mitcham welcomed 27 new citizens from 20 different countries at a Citizenship Ceremony at Mitcham Memorial Library last month.

City of Mitcham Mayor Dr Heather Holmes-Ross presented each new citizen with a jar of Indigenous jam, representing Australia's Traditional Owners, a Unity pin which symbolises commitment to a brighter future for all Australians and a native Australian seedling.

Citizens were also presented letters of welcome from the St Bernadette's School Year 6 class.

"We take enormous pride in your decision to become an Australian citizen," Mayor Holmes-Ross said.

At the Ceremony, held to coincide with Refugee Week, grant recipients of the February 2023 My Mitcham Community Grant round were acknowledged.

Over the past 12 months, City of Mitcham's Grants Program has provided \$191,000 to members of our community.

Certificates were presented to grant recipients from the February My Mitcham Community Grant round, including the Blackwood and Community RSL for new toilets at the RSL, the Clarence Gardens Bowling Club for bench seating on two greens; Raymond Family Trust for a series of programs that aim to reduce loneliness in the community; the South Australian Athletic League for the Toby Schreier Flinders Pro Meet and Mitcham City Brass for the 2023 Mitcham Band Festival.

**To find out more and apply for a grant, visit [www.mitchamcouncil.sa.gov.au/grants](http://www.mitchamcouncil.sa.gov.au/grants)**



**Top:** New citizens Delfin Patricio and Lovis Alba.  
**Above bottom:** Grant recipient Brenton Miegel from Mitcham City Brass with City of Mitcham Mayor Dr Heather Holmes-Ross.

## Ukrainian artists showcased

Mitcham's Gallery One is set to highlight the artwork of South Australia's Ukrainian community as part of this year's SALA Festival.



Co-Curator Marie Trebilcock, with exhibiting artist Anna-Maria Zupancic and Co-Curator Natalya Boujenko at Gallery One.

'The Price of Freedom' will feature the work of artists with a Ukrainian background and members of the Ukrainian Women's Association SA, along with artists who will explore the topic of freedom.

The exhibition follows Gallery One's major fundraiser auction at the gallery last year which raised \$3,000 to help Ukrainians fleeing the war to settle in South Australia.

Co-curator Marie Trebilcock said the Mitcham community had rallied to support the cause.

"We heard that 400 refugees had come to South Australia and had to wait three to four months before they could access government assistance," she said. "The support was just amazing – everybody came together and offered to do what they could to help these people."

**The Price of Freedom, Tuesday to Friday 10am to 4pm, first Saturday of the month 1pm to 5pm Gallery One, 1 Torrens Street, Mitcham, [www.galleryone.org.au](http://www.galleryone.org.au)**

Ukrainian-born artist Natalya Boujenko is looking forward to being part of the exhibition which she hopes will draw attention to the plight of her homeland.

She draws inspiration from feelings of pride, love and sadness for Ukraine in her work.

"The Ukrainians are not unique, there are people here from countries like Iran, Georgia and Palestine, who are fighting for their freedom, too," she said. "It is not something that should be taken for granted – it has to be fought for and defended."

Former art teacher Anna-Maria Zupancic grew up in Slovenia and plans to feature a red carnation, the symbol of her country, in her submission.

## Carrick Hill celebrates Mid-Century modernism

Carrick Hill is set to celebrate the Mid-Century movement in its SALA exhibition that will run from 2 August to 15 October.

Curated by Margot Osborne, 'Adelaide Mid-Century Moderns: emigres, mavericks and progressives' features paintings and prints by 25 Adelaide artists.

**For opening times and bookings, visit [www.carrickhill.sa.gov.au](http://www.carrickhill.sa.gov.au)**





# City of Mitcham Annual Business Plan 2023/2024



## From the Mayor

On behalf of the City of Mitcham, I present the 2023/2024 Annual Business Plan, Budget and Long-Term Financial Plan.

The Plan includes several cost neutral climate initiatives and continues to address the impact of climate change through self-funding solar investment opportunities.

In the year ahead we look forward to honouring co-funding commitments to State and Federal governments to progress a range of projects as well as continuing to maintain and improve our community buildings, roads and reserves.

Council is set to increase rates by an average \$171 per residence, an average increase of 8.9 per cent. Council has worked especially hard this year to find efficiencies and ongoing savings of \$863,000 per annum to help us to deliver existing services at less than the cost of inflation.

Many residents have lowered their cost of living by taking advantage of our solar, battery and virtual power plant collaboration through our Mitcham Community Renewables Program. This program is continuing. Additionally, Council has prioritised our exploration of new ways to lower energy costs for residents and businesses, noting that the power costs are set to increase dramatically by more than 20% from 1 July 2023.

Thank you for your continued support as we work together to create a sustainable, vibrant and connected community.

**Dr Heather Holmes-Ross**  
Mayor, City of Mitcham

## New and improved services for the community

### Implementing the Brown Hill Keswick Creek Stormwater Master Plan

Contribution to the Regional Subsidiary to implement the Brown Hill Keswick Creek flood mitigation works.

### Installing Solar Panels and a Battery at Belair Community Centre

Install approximately 20kW solar panel array and 25-40kW battery at the Belair Community Centre Building.

### Installing Solar Panels at Tiwu Kumangka

Install approximately 60kW solar panel array at the Tiwu Kumangka building after construction is complete.

### Installing Solar Panels and a Battery at the Mitcham RSL

Install approximately 26kW solar panel array and 40kW battery at the Mitcham RSL in Kingswood.

### Investing in the Road Asset Renewal Backlog (to be completed by 2027)

Undertake accelerated renewals of our roads to address our backlog by 2027.

### Upgrading Drainage and Carparking at AA Bailey Reserve, Clarence Gardens<sup>^</sup>

Improve drainage and carparking to support a key community asset.

### Revitalising Green Spaces in St Marys<sup>^</sup>

Revitalise green spaces in St Marys including at Thurles Street Reserve.

### Upgrading Mortlock Park Oval Facilities, Colonel Light Gardens<sup>^</sup>

Upgrade the Gil Langley building and supporting facilities at Mortlock Park, Colonel Light Gardens (subject to finalisation of design, further community consultation and heritage considerations).

### Extending and Upgrading the Stormwater Network

Construction of new/upgraded stormwater infrastructure to improve flood mitigation – prioritised in relation to upgrades associated with road renewal work, stormwater management plans and localised flooding complaints.

### Upgrading Rozelle Reserve, Melrose Park<sup>^</sup>

Revitalise Rozelle Reserve in consultation with the community.

### Investing in Water Sensitive Urban Design (WSUD)

Invest in continued implementation of Council's Smart Water Management Plan through installation of tree inlets and soakage pits across the City in conjunction with kerbing works.

### Provision of Annual Community Facilities Grants

Continue to provide grant support to community groups with up to \$5,000 in matched funding for minor capital improvements to their facilities and grounds that would otherwise not be funded via the other City of Mitcham grant streams.

### Additional Open Space Volunteer Coordinator

Additional resource to meet the increasing interest in volunteering in open space sites in the City of Mitcham, to allow additional volunteers to be taken on.

<sup>^</sup> Services/Projects that have received State or Federal Government funding commitments



# Council's expenditure

In conjunction with the \$77.4 million for service delivery and debt servicing, Council is investing a total of \$44.6 million on asset replacement and creation. This includes \$20.7 million on renewing existing assets as they fall due, \$2.8 million on the asset renewal backlog and a further \$21.1 million to be invested in the creation of new assets and asset enhancements. Along with the operating surplus of \$0.9 million (excluding subsidiaries and one-off changes), Council is funding investment in asset renewal and creation as well as loan repayments with \$12.5 million of external grant funding, \$18.3 million in funded depreciation and \$10.0 million in net borrowings. Expenditure on community assets is summarised below:

Asset Category	Renewal (\$m)	Renewal Backlog (\$m)	New (\$m)	Total (\$m)
Bridges	1.31	0.00	-	1.31
Bus Shelters	0.02	0.00	-	0.02
Car Parks	0.33	-	-	0.33
Buildings & Land	1.87	-	2.31	4.18
Footpath	0.72	0.00	0.09	0.81
IT Equipment	0.77	-	0.07	0.84
Office Furniture & Equipment	0.13	-	-	0.13
Open Space (incl parks, gardens, playgrounds, lighting)	1.02	0.06	0.40	1.48
Plant & Equipment (incl Fleet)	3.08	-	-	3.08
Retaining Walls	0.00	-	-	0.00
Roads	10.09	2.75	0.75	13.60
Stormwater & Drainage (incl Brownhill & Keswick Creeks)	1.32	-	2.27	3.59
Solar Projects	-	-	0.56	0.56
Projects with Government Funding	-	-	14.65	14.65
TOTAL	20.67	2.82	21.10	44.59



## Proposed Extension of the Blackwood Lions Bargain Centre, Eden Hills<sup>^</sup>

Blackwood Lions' proposed expansion of sheds, car parking and an online shop at the Council leased site on Shepherds Hill Road, Eden Hills.

## Maintaining Water Sensitive Urban Design Solutions

Increase operating budget to meet maintenance standards for Water Sensitive Urban Design solutions.

## Provision for Minor New Capital Requests in Open Spaces

Funding allocation to respond to requests for minor new open space assets such as new rubbish bins, fences, tables and other park furniture and amenities. Currently there is no budget allocation to respond to such requests.

## Upgrade of the Flinders Drive Pedestrian Crossing with Flashing Twin Lights

Upgrade the existing pedestrian crossing at Flinders Drive, Bedford Park to include twin flashing lights.

## Provision of a Sustainable Living Subsidy Program for Cloth Nappies and Sanitary Products

Introduce a Sustainable Living Subsidy Program for cloth nappies and sanitary products, enabling the community to transition to more sustainable living.

## Implementing a Cyber Security Program

Enable additional auditing, monitoring and management against the various cyber threats, risks and vulnerability that are inherent to an organisation of Council's size.

## Christmas Activation at CC Hood Reserve, Panorama

Provide Christmas activation at CC Hood Reserve, Panorama each year, including lights, performances and activities.

## Entrance Upgrade and Meeting Room Relocation at Hawthorn Bowling Club, Hawthorn

Relocate and widen the doorway in the south-eastern corner of the building and relocate the adjacent meeting room to north-eastern corner of the building.

## Installing a Public Toilet and Storage Facilities at Manson Oval, Bellevue Heights

Construct a new public toilet facility which includes a unisex ambulant cubicle and unisex accessible cubicle at Manson Oval, Bellevue Heights.

## Provision of a Green Buildings Fund

Provide an additional capital allocation to fund green elements for assets that support sustainability outcomes across Council's asset portfolio.

## Investment in Spatial Software for Weed Management

Data management of bushland, weed management, chemical usage, job dispatching and contractor reporting.

## Implementing the City Image (Signage & Furniture) Pilot Scheme

Comprehensive and coordinated refresh of signage and furniture at up to three targeted parks to test the signage and furniture prototypes in a real world environment.

City of Mitcham  
Annual Business Plan 2023/2024

Asset Categories

- Roads & Kerbs
- Roads & Kerbs – Design only
- Footpaths
- Footpaths – Design only
- Car Parks
- Bridges
- Stormwater
- Bus Shelters
- Open Space – Environmental and Waste
- Open Space – Fences
- Open Space – Playgrounds
- Open Space – Sport & Recreation
- Buildings
- Traffic Management
- Smart Water Design
- Solar
- Government commitment projects

Bedford Park

- Edison Road
- Flinders Drive
- Francis Street
- Franklin Avenue
- Heath Street
- Matthew Street
- Penfold Street
- Rupert Avenue
- Sutton Road

Belair

- 3 Old Belair Road
- Alta Mira Crescent
- Ash Court
- Belair Community Centre
- Belair Road
- Christine Avenue
- Fourth Road
- Gault Road
- Gloucester Avenue
- Horsell Road
- Sheoak Road

Bellevue Heights

- Argyll Walk
- Deepdene Avenue
- Donnybrook Road
- Flinders Road
- Glenwood Drive

- Manson Oval
- Manson Reserve
- Toolangie Place

Blackwood

- Alison Avenue
- Blackwood Bowling Club
- Blackwood Community Hub
- Blackwood Hill Oval
- Blackwood Lions Club
- Brighton Parade
- Clematis Drive
- Coromandel Parade
- Edward Street
- Garnet Avenue
- Hewett Sports Ground
- Maddern Reserve Carpark
- Main Road/2 Gulfview Road, Blackwood
- McDonald Avenue
- Miller Terrace
- Myall Avenue
- Winns Road
- Young Street
- Young Street & Waite Street Reserve

Brown Hill Creek

- Brown Hill Creek Road
- Tilleys Hill Road
- VB Tilleys Hill Road

Clapham

- Anson Avenue
- Elizabeth Street
- Haddington Reserve
- Harold Street

- Macpherson Street
- Windermere Avenue
- AA Bailey
- Arthur Street
- Lee Street
- Nieass Reserve

Colonel Light Gardens

- CLG Institute Hall
- Hastings Road
- Hillview Reserve
- Ludgate Crescent
- Mortlock Park
- Reade Park
- Reade Park Bowling Club
- Reade Park Croquet Club
- Richmond Avenue
- Salisbury Crescent
- Wattlebury Road
- West Parkway
- York Place

Coromandel Valley

- Coromandel Parade
- Diosma Drive
- Horners Bridge
- Maddern Reserve Carpark

Craigburn Farm

- Coromandel Parade
- Treetop Park

Cumberland Park

- Cumberland United Football Club
- Narinna Avenue
- Tweed Street
- Ayers Avenue
- Dudley Avenue
- Elder Street
- Francis Street
- Goodwood Road / Aver Avenue Stage 1
- Hope Street
- Milne Street

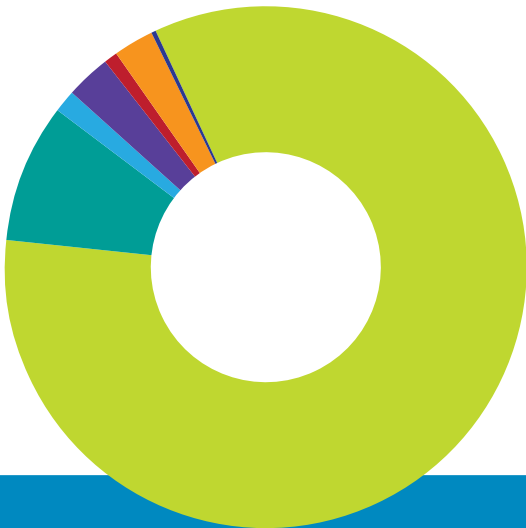
Eden Hills

- 269 Shepherds Hill Road
- 3 Trevor Terrace
- Blackwood Lions Bargain Centre
- Cooper Street
- Euro Avenue
- Hillcrest Drive
- Karinya Reserve
- Kinedana Lane
- Kinedana Street
- Manson Avenue
- Mill Terrace
- Park Street
- Perry Lane
- Pinda Street
- Ronald Lane
- Shepherds Hill Road
- Shepherds Hill Road (Service Road)
- Willora Road

Income

Rates income is the primary source of funding used to provide a range of essential everyday services to the community with \$65.5 million being raised in the form of rates and \$12.7 million from other sources including user fees and charges, and State and Federal grants.

- 83.7% Rates
- 0.13% Investment income
- 8.6% Grants, subsidies and contributions
- 1.3% User charges
- 2.8% Statutory charges
- 0.7% Other revenue
- 2.6% Landscape levy
- 0.2% Reimbursements



Capital Works Program





### What rates will I pay?

To fund the activities and new service investments in this business plan, the total amount of rate revenue to be raised this year is \$65.5 million. This will see residential rates increase by \$171 on average, and commercial rates increase by \$454 (8.90%).

### How are properties valued?

Council uses capital value of each property relative to all the other properties in the city as the basis for distributing the total required rate revenue across all ratepayers and land use types. Council utilises the capital values provided by the State Valuation Office for this purpose.

### Rates based on land use (differential rate)

Council uses land use as a factor to apply differential rates. If you believe a property has been incorrectly classified as to its land use, a written objection may be made (to the Council) within 60 days of receiving the first rates notice for 2023/24.

### Rebates and deferral of rates

Rebates and deferral of rates are available to eligible properties for a range of reasons and situations. Council has a Postponement of Rates for Seniors Scheme and applies a rate capping scheme to all properties to ensure that significant increases in rates are moderated over time.



For more information on Council's Annual Business Plan, Long Term Financial Plan or Rates visit [www.mitchamcouncil.sa.gov.au](http://www.mitchamcouncil.sa.gov.au) or call 1300 133 466.

Willunga Close	🔗	Meadow Avenue	🔗	<b>Mitcham</b>		<b>Springfield</b>	
Willunga Street	🔗	Panorama Avenue	🔗	Blythewood Road	🏠	Balfour Road	🔗
Yalanda Street	🔗	Sloan Road	🔗	Hill Street	🔗	Coreega Avenue	🔗
<b>Glenalta</b>		Surrey Street and Batley Avenue	💧	St Michaels Road	🏠	Coreega Avenue Watercourse	💧
Beale Avenue	🔗	Turners Avenue	💧🔗	Sturt Baseball Club	🏟️	Hillside Road	🔗
Colorado Drive	🔗	Watahuna Creek	💧	<b>Netherby</b>		Oakdene Road	🔗
Elizabeth Avenue	🔗	Willow Avenue/Glen Avenue	💧	Netherby Avenue	🏠	<b>St Marys</b>	
Kirawina Grove	🔗	<b>Kingswood</b>		Netherby Tennis Club	🏟️	Comaun Street	🔗
Lowan Avenue	🔗	Ashbourne Avenue	🔗	<b>Panorama</b>		Denis Street Reserve	🌳
Miner Avenue	🔗	Balham Avenue Reserve	🌳	Alpha Crescent	🔗	Denis Street	P
Minnow Drive	🔗	East Parade	🔗	Beta Crescent	🔗	Donald Street Reserve	🌳
Sun Valley Drive	🏠🔗	Elphyn Road	🔗	CC Hood Reserve	💰	Dorene Street	💧🔗
Upper Sturt Road (Service Road)	🔗	Hillview Road	🔗	Daniels Avenue/Frontenac Avenue	💧	Greening St Marys	💰
<b>Hawthorn</b>		Kingswood Tennis Club	🏟️	Eliza Place	🏠	Norman Court	💧
Abbotshall Road	🔗	Mitcham RSL	🏠	Grandview Drive	🏟️	Pinn Street	🔗
Clifton Street	🔗	Princes Road	🔗	O'Neil Street	🏠	Pinn Street (East)	🏠
Delwood Reserve	🌳	Rugby Street	🏠	Seaview Crescent	🔗	Pinn Street (West)	🏠
George Street	🏠	<b>Lower Mitcham</b>		<b>Pasadena</b>		Rothsay Avenue	🔗
Hawthorn Bowling Club	🏟️	Denman Tennis Club	🏟️	Cawthorne Avenue	🔗	St Marys Park	💰
Hawthorn Crescent	P	Grange Road	💧	Day Lane	🔗	St Marys Reserve – Uni SA Testing	💧
Jeffrey Street	🔗	Price Avenue	🔗	Eyre Lane	🔗	St Marys Street	🏠🔗
Rosevear Street	🏠🔗	<b>Melrose Park</b>		Naomi Reserve	🌳	Walsh Avenue	🏠🔗
William Street	🔗	Depot	🏠🌳	Naomi Terrace Tennis Courts	🏟️	<b>Torrens Park</b>	
<b>Hawthorndene</b>		Maria Street	🔗	Painter Street	🏠🔗	Alton Avenue	🔗
Acheron Avenue	🔗	Morgan Avenue	🔗	Pasadena Community Centre	💰	Civic Centre	🏠🏟️
Batley Avenue	🔗	Price Street	🔗	Pasadena Reserve	🏟️	Eli Street	🔗
Devonshire Road	🔗	Regent Street	🔗	Pritchard Grove	🔗	Kilbryde Road	🔗
East Terrace	🔗	Richmond Avenue	🔗	Rugby Lane	🏠	Princes Road	🚫
Gamble Crescent	🔗	Rowell Road	🔗	Spiers Lane	🏠	<b>Westbourne Park</b>	
Hawthorndene Oval	🏟️P	Rozelle Reserve	💰🌳	Thistleton Crescent	🔗	Almond Grove	🔗
Kindergarten Avenue	🔗					Angas Road	🏠🔗
Maddern Reserve	P					Constance Street	🔗
McGough Road	🔗					Richmond Road Memorial Hall	🏟️

## Mayor

**Dr Heather Holmes-Ross**

Telephone:  
0401 841 000

hholmes-ross@mitchamcouncil.sa.gov.au



As the third tier of government you might be surprised to learn that local government is a creation of our state government. Following colonisation, the first council in South Australia was the Adelaide City Council established in 1840, with Mitcham the second in 1853. The South Australian Constitution Act 1856 which set the stage for a system of elected local government bodies followed, and finally the District Councils Act 1887 established local governments across the state extending governance structures to regions outside major cities.

The current system and responsibilities of local government are set out in the Local Government Act 1999 which during the last term of state government, underwent a major review, resulting in the introduction of a number of reforms. These include substantial changes to the role of the Mayor which were implemented from the local government elections in November 2022.

Previously the role of the Mayor was to:

- preside at meetings of Council.
- act as principal spokesperson of the Council.
- exercise other functions of the Council as the Council determines.
- perform civic and ceremonial duties, as the office of principal member.
- provide advice to the CEO between council meetings on the implementation of a decision of Council.

The new role of the Mayor includes all previous duties plus:

- provide leadership and guidance to the Council.
- lead and promote positive and constructive working relationships among Council Members.
- provide guidance to Council Members on the performance of their roles, including on the exercise and performance of their official functions and duties.
- support Council Members' understanding of the separation of responsibilities between elected representatives and Council employees.
- liaise with the CEO between Council meetings on the implementation of Council decisions.

These changes explicitly state the leadership role of the Mayor. Although this was previously implied, I am thankful that the role is more clearly defined as this provides clarity in the Chamber and community and has provided a catalyst for me to seek out ways to increase my leadership skills.

I have always seen creating and maintaining good working relationships with Council Members as integral to my role, but the new guidance and support duties are an interesting addition. I am really enjoying this new aspect of the role as it requires a deeper level of communication with councillors which strengthens our relationship.

Additional to the leadership requirements, the local government reforms also signal a change in the relationship between the Mayor and Chief Executive Officer (CEO), notably from advisory to liaison.

The CEO and I recently attended a forum for Mayors and CEOs which included a session on examining this relationship. I felt very lucky to report that I have enjoyed a collaborative and fruitful relationship with our CEO, Mr Matthew Pears, since becoming Mayor in 2018. Matt and I make a great team. Our thoughts are generally aligned, although there is room for healthy debate, and together I believe we have created a safe, respectful and innovative Chamber environment which allows us to make sensible, evidence-based decisions.

## Overton Ward

**Cr Kamal Bhagat**

Telephone:  
0430 923 310

kbhagat@mitchamcouncil.sa.gov.au



Clarence Gardens, Cumberland Park, Daw Park, Melrose Park and parts of Colonel Light Gardens and St Marys.

We are into the new financial year and Council has been very busy finalising the budget for 2023/24. Council has increased residential rates by 8.9%, an average increase of \$171 for residents. While I do agree that this can be a little steep for some residents, as financial pressure is at an all-time high, this increase will allow Council to focus on providing additional services for our community, all while maintaining the delivery of current services. The appointment of an additional Open Space Volunteer Coordinator was in high demand. I received many emails from residents and the Woodlake Reserve Action Group highlighting the many benefits from introducing an additional coordinator as a 'coordinators will work with volunteers to further protect and enhance shared environment, strengthen our communities and the volunteer workforce too'. I agree with and support these suggestions but also believe that this is beneficial as many of our parks and green spaces are being revitalised and upgraded and may require the aid of further volunteer assistance in the coming future.

#### **Pasadena Community Centre Job Ready Programs**

This month residents aged between 14 and 65 are invited to visit Pasadena Community Centre at 47 Adelaide Terrace in Pasadena to participate in a free Job Ready Program. Here residents can develop skills including preparing for job interviews, writing resumes/cover letters and will get tips for adjusting to new workplaces. This workshop will be held from 2pm to 3pm every Wednesday for the duration of August. Residents wishing to go are invited to contact [izzy.gregory@interactaustralia.com.au](mailto:izzy.gregory@interactaustralia.com.au) to register.

#### **Traffic and parking updates in Overton**

The ongoing Local Area Traffic Study for the Cumberland Park and Daw Park areas is of a high priority for Council. The data collected, which did experience delays is now underway. The next step will be an opportunity for the local community to provide feedback during August. On a brighter note, with the help of the State Government (Nadia Clancy MP) and the Department of Infrastructure and Transport (DIT), bus lane timings on Goodwood Road between Morgan Avenue and Ormond Avenue have been reduced from 7am to 10am to 7am to 9am. This is great news for residents and business owners on this stretch of Goodwood Road alike, allowing for an increased availability for parking. This change will also help to direct the flow of traffic allowing commute to work in the mornings to be slightly less of a hassle. The only thing left is for DIT to alter the sign boards alongside this section of Goodwood Road to inform travelling residents.

Recently my Co-councillor Jane Bange and I have been doorknocking local businesses on Goodwood Road to uncover any issues such as excessive graffiti and parking issues. Our goal for the coming month is to visit businesses on Winston Avenue and the surrounding areas and seek their opinions.

If you have any further queries or any issues please do not hesitate to contact me on 0430 923 310 or email me through [kbhagat@mitchamcouncil.sa.gov.au](mailto:kbhagat@mitchamcouncil.sa.gov.au)

## The Park Ward

**Cr Tom Morrison**

Telephone:  
0490 075 955

tmorrison@mitchamcouncil.sa.gov.au



The Park Ward encompasses the suburbs of Glenalta, Hawthorndene and parts of Blackwood, Belair, Coromandel Valley, Upper Sturt and Crafrers West.

#### **Budget Bonanza**

For those who are regular readers of these Councillor columns, you are most likely sick of reading about the budget. I've held off commenting on it until a final decision was made. Like any decision by committee, reaching one takes a long time and will never be perfect. Here are some of my thoughts on this year's budget:

#### **The Bad of the 23/24 Budget**

- New footpaths have been left out (again).
- Final budget could have reflected consultation feedback significantly better in my opinion.
- An increase in Council rates nobody ever wants to see again.
- Funded projects which were not time sensitive or strongly supported in the consultation.

#### **The Good of the 23/24 Budget**

- Funding for a Trial Tree Assistance Fund and a Bike Strategy (at no impact on rates).
- Continued investment in the road maintenance backlog, extending and upgrading the stormwater network and Water Sensitive Urban Design programs.
- Funding for an additional Open Space Volunteer Coordinator, Lions Bargain Centre Upgrade and maintenance of Water Sensitive Urban Design projects.
- The budget funds the ongoing costs of services and does not defer costs to future generations, like other councils.

It won't surprise anyone that support for footpath maintenance and the construction of new footpaths ranked highly as a requested service during this year's budget consultation. In the budget process, a decision was made to cut both of these projects in an effort to deliver a lower rate rise. It was both to my bemusement and frustration that the Chamber ended up prioritising a variety of other projects such as a Green Buildings Fund and City Image (Signage & Furniture) Pilot Scheme over footpaths, which did not receive significant support during the community consultation. It made no sense to me to fund these 'nice to have' projects compared with absolute essentials. In total, around \$863,000 of ongoing savings was found in this year's budget, including some cuts to existing services.

One thing that stood out for me during the budget process, was just how many projects should have been funded in previous years or have been waiting for funding for a very long time. For example, a public toilet and storage facilities at Manson Oval has been on the cards since 2017. Some projects that were funded this year, have been on the cards for even longer. A new Open Space Volunteer Coordinator has also finally been funded. This will ensure we meet national standards for any volunteers who do work in Mitcham's significant public open space, the lack of capacity to accept new volunteers for many years now has seen Council turn away people who want to help. I cannot understand why a position that will save money took so long to fund.

In summary, the budget was a very mixed bag but did not in my opinion, get the priorities right this year and nor my support.



**Gault Ward****Cr Pia George**

Telephone:  
0488 277 010

pgeorge@mitchamcouncil.sa.gov.au

*Gault Ward encompasses the suburbs of Hawthorn, Westbourne Park, Lower Mitcham and parts of Colonel Light Gardens, Clapham and Kingswood.*

August has arrived, bringing us one month closer to spring and relief from the cold days and darker evenings! The last few months, I've been kept busy discussing local projects with residents across the ward – including traffic studies in Colonel Light Gardens, bridge replacements in Hawthorn, upcoming consultation on community infrastructure projects in Mitcham (Mitcham Court Precinct!), along with the proposed location of the Forestville Hockey Club and pitch at Unley High School.

Although each of these projects may vary in scope, cost, complexity, community interest and Council involvement, I would be very happy to have a conversation with you about any of these, or other local projects.

The hockey pitch has attracted strong interest from residents living in Kingswood and Netherby, who have concerns about the impact that the project may have on them – including traffic, noise and visual impacts and environmental impacts. There have been presentations to the Council from both the Forestville Hockey Club and the Residents' Association and if you are interested to learn more about the project, you can access the Council's agendas for May and June of 2023 (either online or at the Council Chambers), which incorporate information about the project, as well as the Council's responses to resident queries.

The project is an initiative of the Forestville Hockey Club, which will be located on land owned by the State Government and which has funding committed to it by the State and Federal governments to the value of approximately \$4 million, along with an in-principle funding commitment from the Council of \$140,000, which is subject to certain conditions, including that the club conduct community consultation. This consultation process has recently concluded and following assessment of this, I expect that a decision will be made by the Council in the coming months in relation to the previous in-principle commitment. If you'd like to have a conversation about this project, please give me a call or send me an email.

In other news, applications are currently open for the My Mitcham Community Grants, with applications due by the 31st of August. These grants provide funding (with no set funding limit) for local community initiatives, including programs, workshops, library events, community events and cultural celebrations. If you have a passion or a great idea for activating our community, you can access the grant guidelines on the Council's website, along with the past recipients. We know that this funding can bring vibrancy and transformation to community groups and individuals in the City of Mitcham, so get your thinking caps on now and contact the council for further information!

**Craigburn Ward****Cr Karen Hockley**

Telephone:  
0423 919 080

khockley@mitchamcouncil.sa.gov.au

*Craigburn Ward encompasses the suburbs of Craigburn Farm, Bellevue Heights and parts of Blackwood, Coromandel Valley and Eden Hills.*

There was a time, not all that long ago, when Mitcham Council found it difficult to listen to the community. Motions were moved and passed requiring that Council not discuss proposals, even when there was a high level of support for the project, demonstrated by large petitions. Examples include resident calls for a community garden in the hills and a toilet on Waite Street Reserve.

I'm glad that times have changed, and we have a Council that is ready to listen and respond to community needs. Recent examples include the funding of a bike strategy. This proposal was supported by a petition of over 400 signatures, and yet it wasn't included in the staff recommendation to Council for funding. I was delighted that when project funding was considered by Councillors, a majority rejected the staff recommendation and voted for an alternative that included funding the bike strategy. This means that we will have a new strategy for cycling infrastructure for commuters and also for our leisure cyclists, a really good outcome.

Another example is the desire for community groups, I'm told around 30 of them, to become volunteers in the City of Mitcham. Mitcham Council has not had the capacity to bring on new volunteers due to the lack of staff resources available to support them. This means that residents in our city who want to improve their local area, make connections with others, and stay active have been stymied before they can even get to first base.

One group hoping to volunteer is the Woodlake Reserve Action Group (a subset of the Blackwood Action Group). This community group simply wants to be able to do some gardening and small maintenance work to keep their local reserve in the best possible condition. This group refused to accept the status quo, so in addition to liaising with Councillors and Council staff to have the larger maintenance items attended, they also rallied the local community to get involved in the consultation over Council's annual budget. Their rallying cries were heard by the community and helped to generate around 225 individual responses to the Council's proposed budget. This is a huge improvement on the usual response rate, which often consists of only a handful of budget responses.

As a result of community support, Council voted for budget option B, which includes a new staff resource to support volunteers. I fully expect that this resource will generate significant benefits to the community and that the cost will be repaid many times over. Other projects that were funded include an expansion of the sheds and carparking at, and the establishment of an online shop for the Lions Bargain Centre in Eden Hills and a new public toilet to be provided on Manson Oval in Bellevue Heights.

As always, I encourage you to speak out for the services that you need from Council. Call me on 0423 919 080, I'd love to hear from you!

**Boorman Ward****Cr Joanna Wells**

Telephone:  
0403 197 071

jwells@mitchamcouncil.sa.gov.au

Facebook: Joanna4Boorman

*Boorman Ward encompasses the suburbs of Brown Hill Creek, Mitcham, Netherby, Springfield, Torrens Park, Urrbrae and parts of Leawood Gardens, Belair, Crafers West and Kingswood.*

Niina Marni,

It's been a busy couple of months since I last wrote, with the Budget coming to the Chamber for a decision after community consultation. Community consultations are interesting, garnering the whole gamut of responses from the community; some well-informed, showing considerable thought of the issue at hand and also of other community members. Others are well intentioned but based on incorrect assumptions or on misinformation.

Council staff respond to all questions asked throughout the consultation process and this Q&A is a good way to become better informed about Council processes such as how rates are charged. It's available at [www.yoursay.mitchamcouncil.sa.gov.au/draft-annual-business-plan-2023](http://www.yoursay.mitchamcouncil.sa.gov.au/draft-annual-business-plan-2023)

Whilst the rates increase does come in slightly over CPI, it offers great value for money and will enable Council to do much to continue to mitigate against climate change, addressing cost of living pressures within the community at the same time. Make the most of the great facilities we have across Mitcham and you will more than get your money's worth!

For not much more than business as usual, we've been able to fund extensions to the Blackwood Lions Bargain Centre at Eden Hills – a centre which not only raises significant amounts of money for Lions community projects but keeps a huge amount of material out of landfill and enables the provision of good quality homewares to the community – and subsidised the cost of re-usable cloth nappies to Mitcham residents. This has the potential to positively impact our bottom line (excuse the pun) saving money for families, waste disposal costs for ratepayers and contributing positively to the environment and climate change mitigation. Statistics show that every child who uses disposable nappies uses 6,500 of them before being toilet trained. A disposable nappy takes 500 years to decompose and those 6,500 nappies – per child! – generate 1 tonne of plastic waste.

We've also funded another Open Space Volunteer enabling more of you who are keen to volunteer in our beautiful open spaces to do just that. To participate, contact Council's Volunteer Coordinator Lynne Norton on 8372 8888.

Council has decided to purchase two 'big batteries' for the Mitcham Memorial Library and Tiwu Kumangka. It looks as if these will be cost neutral and are another exciting step towards making Mitcham even greener, allowing excess solar generated power to be stored and drawn upon at night, or during power failures.

Lastly, we're consulting on the Community Land Management Plan through the YourSay platform. You can simply search for YourSay on the Mitcham Council website, or go to [www.yoursay.mitchamcouncil.sa.gov.au/mitchamclmps](http://www.yoursay.mitchamcouncil.sa.gov.au/mitchamclmps).

Parcels of land are grouped together by type, making it easy to navigate, and consultation is open until August 20th.

I love hearing about your vision for Mitcham; I'll be at This Fine Day, Saturday 5th August to do just this from 1 until 3pm. Come and join me for a coffee or a cuppa.

Ngaityalaya





# Rare species reintroduced to Mitcham

City of Mitcham's Bush For Life groups are working to reintroduce rare species to Mitcham as part of a rewilding project.

The project has brought together Green Adelaide, Trees For Life and SA Seed Conservation Centre to re-establish seven rare plant species at more than 20 sites across Adelaide's seven metropolitan council areas.

Last month Bush For Life groups planted a range of native seedlings including Golden billy buttons (*Pycnosorus chrysanthus*), Spreading flax lily (*Dianella longifolia grandis*) and Tall daisy (*Brachyscome diversifolia*) at Carrick hill and Blackwood Hill Reserve planting sites.

Trees For Life Regional Coordinator Tamara Horsnell said the project also involved removal of weeds in a bid to return areas to their natural state.

"Over the last 200 years, due to land clearing, these areas have experienced a significant loss of species," she said. "This project is about reintroducing rare and endangered species back to places and creating a seed bank to help us continue their spread across Adelaide. These plants encourage native bees, butterflies and insects which will help to strengthen the ecosystem as well."

Bushcare volunteer Paul Brewster has been a volunteer with the group since 2016 and has witnessed the gradual transformation of many areas of the Mitcham hills.

"We've been drilling and filling olives and clearing boneseed in this area for the past year," he said. "It is hard work, but it is rewarding to see changes."

Other species planted include Showy copper wire daisy (*Podolepis jaceoides*), Clover glycine (*Glycine tabacina*) and Small scurf-pea (*Cullen parvum*).

**To get involved with Bushcare at Trees For Life, call 8406 0500 or visit [www.treesforlife.org.au](http://www.treesforlife.org.au). To join the Carrick Hill group, contact Stuart Gonda on 0428 931 716.**

*Volunteers Paul Brewster and Carol Delve with Trees For Life Regional Coordinator Tamara Horsnell at Blackwood Hill Reserve.*

## Buy one, get one free spring offer

Jeffries are providing City of Mitcham residents a 'Buy one, get one free' offer for Jeffries compost, soil and mulch supplies during September.

Using your green bin means composters can transform green organics into products that put carbon back into local soils.

To redeem the offer, simply visit Hollards, 20 Grange Road, Hawthorn, or Hawthorn Sand, Metal and Landscape Supplies, 96 Belair Road, Hawthorn, purchase Jeffries products and get a second bag for free.

The second bag must be of equal or lesser value and cannot be used with any other offer. The offer is valid from 1 to 30 September 2023.

Happy gardening!

### THANKS FOR USING YOUR GREEN BIN!

Have a bag on Jeffries this spring and see what your green organics become.

buy one bag, get one **FREE**

jeffries soil for generations

Scan for details



## Thermal cameras now available at our libraries

Discover ways to save energy at home using thermal cameras now available for hire from the Mitcham Library Service.

These devices improve home sustainability by helping you identify energy leaks and hidden heat patterns.

By pinpointing areas of heat loss, you can make informed decisions about insulation, sealing and energy consumption.

**To borrow a thermal camera, visit the Mitcham Memorial Library or Blackwood Library, or put one on hold via [www.onecard.network/client/en\\_AU/mitcham](http://www.onecard.network/client/en_AU/mitcham)**





## Enter our tree giveaway!

City of Mitcham residents are invited to apply for a free tree as part of our 2023 Arbor Day celebrations.

Residents who enter the competition will go in the draw to win a voucher for a young tree or trees valued at up to \$50 to be redeemed at State Flora Nursery, Belair, or Adelaide Advanced Trees, Cherry Gardens.

Schools within City of Mitcham will also be invited to participate in the tree voucher scheme, with schools able to request two vouchers per school.

City of Mitcham Mayor Dr Heather Holmes-Ross said City of Mitcham has retained its Tree City of the World certification by the Arbor Day Foundation this year, reflecting a commitment to managing and protecting a healthy urban forest.

"Trees cool and shade our homes and buildings, reducing electricity bills and increasing property values," she said.

"Planting a tree on your property is an excellent way you can help us adapt to the impacts of climate change."

Trees purchased must be a long-lived species (at least 25 years) and able to grow to at least four metres' height at maturity and provide shade when the sun is at its highest point.

Applications are due by 25 August. City of Mitcham is set to celebrate Arbor Day on 1 September with a tree planting day at Balham Avenue Reserve, Kingswood.

**To enter and read the terms and conditions, visit [www.mitchamcouncil.sa.gov.au/arbor-day](http://www.mitchamcouncil.sa.gov.au/arbor-day)**

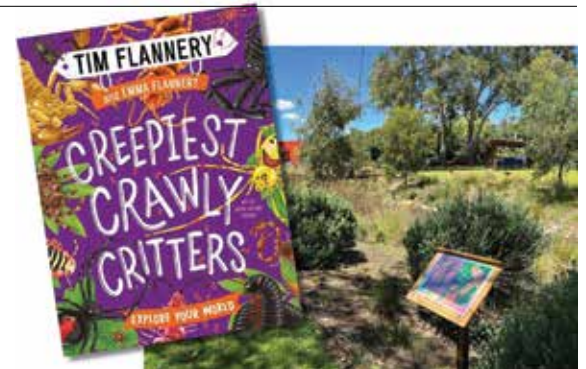
*Mayor Dr Heather Holmes-Ross at State Flora Nursery, one of two participating nurseries in City of Mitcham's Arbor Day tree giveaway.*

## National Science Week at the libraries

Mitcham Memorial Library and Blackwood Library are set to host a series of free events during National Science Week this month.

From a clay parasite workshop, test tube flower holder craft activity, talks, performance and gallery display, there will be plenty of activities on offer. During August, head to the Story Board Walk at the Soldiers Memorial Gardens to enjoy 'Creepiest Crawly Critters' by Tim Flannery and Emma Flannery.

**To find out more and book, visit [www.mitchamcouncil.sa.gov.au/national-science-week](http://www.mitchamcouncil.sa.gov.au/national-science-week)**



## Pasadena Biodiversity Corridor wins Parks and Open Space award

The Pasadena Biodiversity Corridor has been awarded the 2023 AILA SA Australian Institute of Landscape Architects Landscape Architecture Award for Parks and Open Space.

The project was also awarded a Special Mention in the Healthy Parks Healthy People category.

Judges said the project was "delivered on a grand scale and a tight budget" and was an "excellent example of climate-responsive design".

Co-funded by the State and Federal governments, the project has transformed two formerly dry reserves into green, biodiverse spaces, thanks to innovative

engineering that diverts stormwater to the surface.

Native vegetation is now thriving along 300 metres of reinstated creek line, improving the biodiversity and amenity of Grant Jacobs and Sierra Nevada Reserves.

Launched in October last year, the Corridor features a new playground and nature play elements that encourage the community to interact with nature.

**Read more: [www.mitchamcouncil.sa.gov.au/pasadena-biodiversity-corridor](http://www.mitchamcouncil.sa.gov.au/pasadena-biodiversity-corridor)**

## Join a free recycling forum

City of Mitcham residents are invited to a free community forum, organised by Blackwood Action Group, to find out more about recycling.

The forum will cover what can and cannot be recycled, why recycling rules are different for different council areas, how you can maximise your recycling, who is involved in recycling materials and what happens to contents of your green bin.

City of Mitcham's Waste Management Officer and a KESAB Environmental Services Officer will provide information and answer questions.

The forum will be held on Wednesday 23 August at 7.30pm at Blackwood Memorial

Hall, Coromandel Parade, Blackwood and will include the Blackwood Action Group AGM, followed by coffee and supper.

**To find out more, contact Bernie Morgan on 0447 212 278.**





Helen Neale, Jill Willis and the Friends of Price Memorial Dog Park at Price Memorial Oval, Hawthorn.

## 'Dog Friends' group grows

A group of dog walkers who formed a Facebook group in the wake of COVID-19 continues to expand at Price Memorial Oval, Hawthorn.

The Friends of Price Memorial Dog Park formed close relationships during 'lockdowns' when they were still able to walk dogs at the oval.

Jill Willis set up a Facebook page to make communication easier and the page is still well used today.

"We use it to offer to walk someone's dog if they are sick, or to let people know if the Oval is closed," she says.

The group also organises regular get-togethers including a 'Christmas in July' dinner at Clarence Gardens Bowling Club last month.

Helen Neale secured a City of Mitcham Quick Response Grant to host a 'Dog Friends Morning Tea' in April.

About 70 people attended to enjoy a coffee and dog treats for the four-legged friends, both sourced from local suppliers.

"It's been really great to welcome new people and it's nice to see how the dogs have their own 'besties' too," Helen says. "You have a common interest, and that brings you together, and because we are locals, we see each other at other places too."

The Price Memorial Oval is open to dogs off-leash before 11am and after 4pm each day.

**To apply for a Quick Response Grant, visit [www.mitchamcouncil.sa.gov.au/grants](http://www.mitchamcouncil.sa.gov.au/grants)**

## Dog and cat registrations now due

All dog, cat and breeder registrations expire on 30 June and must be renewed by 31 August.

Dogs and Cats Online manages registrations and sends renewal notices in July. Fines and fees may apply for animals that are unregistered or registered late.

If you haven't received your renewal notice, please log on to your DACO account to make the payment, or call Council on 8372 8888 for assistance. Discounts are available for desexed and microchipped dogs and concession holders.

Dogs and Cats Online is a one-stop online service for all annual registration payments as well as dog and cat microchipping, desexing and breeder details.

**To register your dog and cat visit [www.dogsandcatsonline.com.au](http://www.dogsandcatsonline.com.au)**



## Tiny house bound for NSW

An off-grid 'tiny house' made from recycled materials is on its way to its new location in southern NSW thanks to the work of the St Marys Project Centre.

The house was built by Centre Coordinator and former builder John McLean for his nephew and took 12 months to plan and construct.

John enlisted the help of regulars and volunteers at the Project Centre, which includes a wood and metal workshop, teaching them new skills along the way.

Named 'Platypus Cottage', the house has been built using a range of recycled materials including refrigeration panels in the ceiling, a second-hand oven and kitchen basin and a bed frame repurposed to create an upstairs railing.

"I had a lot of help from friends and people I know, helping to find what we needed for this project," John said. "Someone made a

stained-glass window for me, and another friend made the 'Platypus Cottage' sign."

The house is completely self-contained with a compostable toilet and is powered by gas and solar panels.

John and his team clad the house in galvanised iron to create the look of an old shack.

Part proceeds of the house sale will go to St Mary's Anglican Church at St Marys.

The Project Centre is part of St Mary's Anglican Church, established through the Picket Fence Community Centre in 2004.

Volunteers and visitors to the Centre are welcome. The Centre at 1167 South Road, St Marys, and is open on Monday, Thursday and Friday from 9am to 3pm.

**To find out more, call 8276 2693 or visit [www.anglicanparishofstmarys.com.au](http://www.anglicanparishofstmarys.com.au)**