

# 2025 KERBSIDE COLLECTION CALENDAR

## THE GREEN ORGANICS BIN

Never put green organics in plastic bags.



Fruit & vegetables



Bread, pasta & rice



Cooked food



Meat, seafood & bones



Lawn clippings



Leaves, twigs & prunings



Paper towels & tissues



Compostable takeaway packaging



Items labelled compostable AS4736 or AS5810



**NO** plastic bags or wrapping



**NO** polystyrene foam



**NO** plastic packaged food



**NO** clothing, footwear or textiles



**NO** plastic pots or containers

## THE YELLOW RECYCLING BIN

Items go in empty, rinsed, dry and loose (not in bags).



Paper & cardboard



Hard plastic containers



Hard plastic bottles



Juice & milk cartons



Tins & cans



Glass bottles & jars



Empty aerosols



Clean aluminium



**NO** clothing, footwear or textiles



**NO** soft plastic bags or wrapping



**NO** light globes



**NO** broken crockery or glassware



**NO** polystyrene foam



**NO** food or liquids

## THE BLUE LANDFILL BIN

Not all waste can be placed in the blue bin. Please check.



Soft plastics



Polystyrene foam



Clothing, footwear & textiles



Disposable nappies & sanitary items



Broken crockery & glassware



Kitty litter crystals



Ropes & hoses

## NEVER IN ANY BIN

Search 'hazardous waste' at [eastwaste.com.au](http://eastwaste.com.au)



**NO** batteries



**NO** electronic waste



**NO** tyres



**NO** liquid paint



**NO** building materials, dirt or rocks



**NO** coolant or motor oil



**NO** chemicals or poisons

## COLLECT FOOD SCRAPS EASILY USING YOUR KITCHEN CADDY



Line the caddy with bags labelled Certified Compostable AS 4736 and/or AS 5810.



You can also line your kitchen caddy with newspaper.



After 2-3 days, or when the caddy is full, place collected foodscraps in your green organics bin.

## TIPS

- A tight-fitting lid on your green organics bin helps keep flies and pests away.
- Place lawn clippings, leaves or shredded paper on food scraps to reduce odours.
- Freeze scraps like seafood and meat until collection day.



## MISSED BINS, REPAIRS & BIN ENQUIRIES

Call East Waste 8347 5111 or visit [eastwaste.com.au](http://eastwaste.com.au)

## HARD WASTE COLLECTION

Book one free 'at call' collection per financial year at [eastwaste.com.au](http://eastwaste.com.au)

## BATTERIES & E-WASTE

Do not place batteries or e-waste in any household bins due to fire risks. Find drop-off locations by searching 'batteries' or 'e-waste' at [mitchamcouncil.sa.gov.au](http://mitchamcouncil.sa.gov.au)

## HAZARDOUS WASTE

Hazardous waste must not be placed in any household bin. For further info search 'hazardous waste' at [mitchamcouncil.sa.gov.au](http://mitchamcouncil.sa.gov.au)

**DON'T KNOW WHICH BIN?**  
HEAD TO THE WHICH BIN WEBSITE



## ADDITIONAL BINS

Additional waste, recycling or green organics bins are available subject to approval and an annual service fee. Call East Waste 834 75111 or go to [eastwaste.com.au](http://eastwaste.com.au)

# 2025 COLLECTION CALENDAR

## JANUARY

M	T	W	T	F	S	S
			1	2	3	4
6	7	8	9	10	11	12
13	14	15	16	17	18	19
20	21	22	23	24	25	26
27	28	29	30	31		

## FEBRUARY

M	T	W	T	F	S	S
					1	2
3	4	5	6	7	8	9
10	11	12	13	14	15	16
17	18	19	20	21	22	23
24	25	26	27	28		

## MARCH

M	T	W	T	F	S	S
					1	2
3	4	5	6	7	8	9
10	11	12	13	14	15	16
17	18	19	20	21	22	23
24	25	26	27	28	29	30
31						

## APRIL

M	T	W	T	F	S	S
		1	2	3	4	5
6	7	8	9	10	11	12
13	14	15	16	17	18	19
20	21	22	23	24	25	26
27	28	29	30			

## MAY

M	T	W	T	F	S	S
			1	2	3	4
5	6	7	8	9	10	11
12	13	14	15	16	17	18
19	20	21	22	23	24	25
26	27	28	29	30	31	

## JUNE

M	T	W	T	F	S	S
						1
2	3	4	5	6	7	8
9	10	11	12	13	14	15
16	17	18	19	20	21	22
23	24	25	26	27	28	29
30						

## JULY

M	T	W	T	F	S	S
	1	2	3	4	5	6
7	8	9	10	11	12	13
14	15	16	17	18	19	20
21	22	23	24	25	26	27
28	29	30	31			

## AUGUST

M	T	W	T	F	S	S
				1	2	3
4	5	6	7	8	9	10
11	12	13	14	15	16	17
18	19	20	21	22	23	24
25	26	27	28	29	30	31

## SEPTEMBER

M	T	W	T	F	S	S
1	2	3	4	5	6	7
8	9	10	11	12	13	14
15	16	17	18	19	20	21
22	23	24	25	26	27	28
29	30					

## OCTOBER

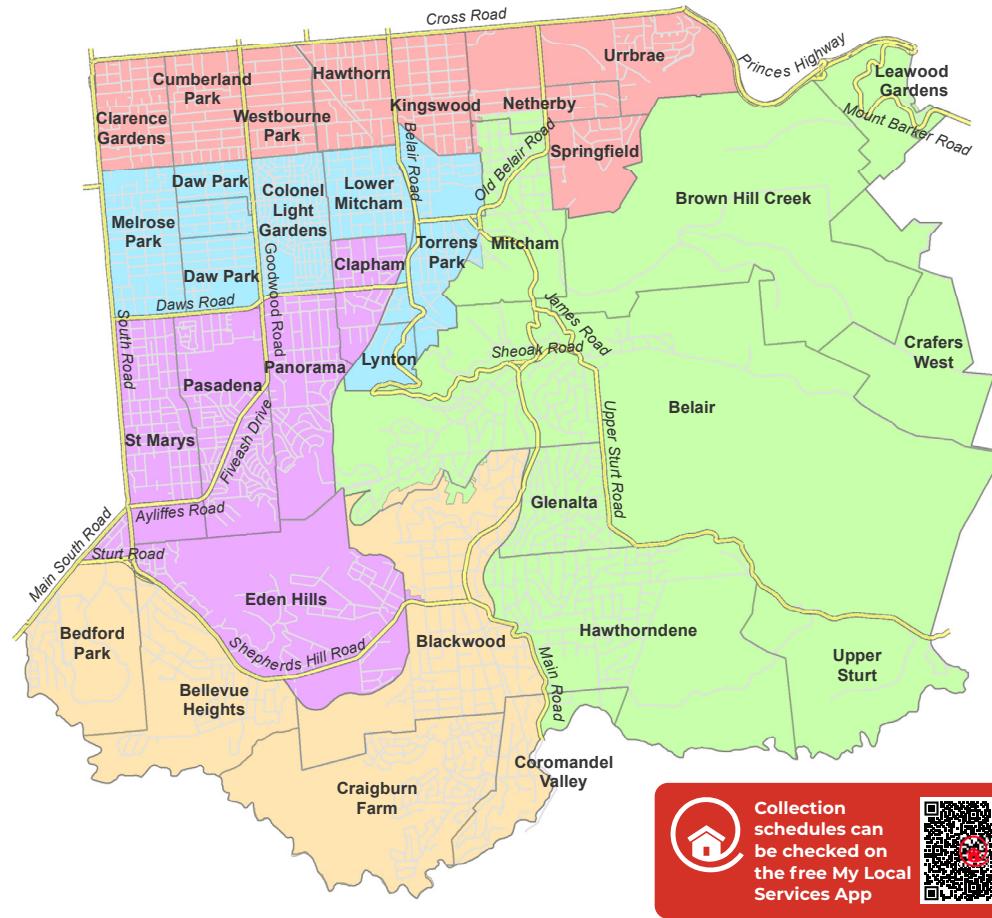
M	T	W	T	F	S	S
			1	2	3	4
5	6	7	8	9	10	11
12	13	14	15	16	17	18
19	20	21	22	23	24	25
26	27	28	29	30	31	

## NOVEMBER

M	T	W	T	F	S	S
					1	2
3	4	5	6	7	8	9
10	11	12	13	14	15	16
17	18	19	20	21	22	23
24	25	26	27	28	29	30

## DECEMBER

M	T	W	T	F	S	S
					1	2
3	4	5	6	7	8	9
10	11	12	13	14	15	16
17	18	19	20	21	22	23
24	25	26	27	28	29	30
31						



## COLLECTION DAY MAP

Use this map to determine your collection day.

- MONDAY
- TUESDAY
- WEDNESDAY
- THURSDAY
- FRIDAY

## LYNTON GREEN ORGANICS DROP-OFF FACILITY

Residents can take excess organic material to:

### Lynton Green Organics Drop-off Facility

Beagle Terrace, Lynton  
Open Mar to Sep 9am - 3pm  
Oct to Feb 8am - 2pm

1st, 3rd and 5th Saturday of each month excluding public holidays.  
Fees apply. Identification required.

## GREEN ORGANICS DROP-OFF FIRE DANGER SEASON

Council has free green organics drop-off days at the Lynton Facility to assist residents prepare their property for the fire danger season. The free days are determined prior to the Fire Danger Season and are advertised on Council's website and social media pages.

Please note the opening hours of the Lynton Facility may be affected by extreme fire danger rated days and extreme weather events.

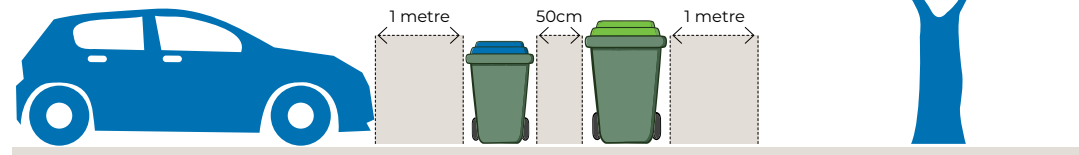
The Lynton Facility will be closed on catastrophic fire danger rated days. Please visit [mitchamcouncil.sa.gov.au](http://mitchamcouncil.sa.gov.au) or check out our Facebook and Twitter pages [@CityofMitcham](https://www.facebook.com/CityofMitcham) to confirm if the facility is open before you visit.

## COLLECTION CALENDAR KEY

- Green organics bin (fortnightly)
- Yellow recycling bin (fortnightly)
- Blue waste to landfill bin (weekly)
- Public holiday collection as usual
- No collections on New Year's Day, Good Friday or Christmas Day. All collections will move to the next day for the remaining week.

## KERBSIDE BIN PLACEMENT

Where practical, keep a minimum distance of 50cm between bins, and 1 metre between bins and parked cars, street trees, stobie poles and letterboxes. Please remove bins after they have been emptied on the day of collection.



Collection schedules can be checked on the free My Local Services App