

# No to Forestville Hockey Club in Kingswood-Netherby

A bad idea here...

1. Negative environmental impacts
2. Non-genuine consultation and the wrong location
3. Increased risks and poor outcomes for our community

Mitcham Council,  
(18 July 2023)

**Kingswood & Netherby Residents  
NO to Forestville Hockey Club at Unley High  
School**



# 2030 MITCHAM

WE ARE A WELCOMING AND INCLUSIVE COMMUNITY THAT VALUES ITS HERITAGE AND NATURAL ENVIRONMENT.

## GOAL 1

### ACCESSIBLE, HEALTHY & CONNECTED COMMUNITY

We connect our community with each other and with their place and empower them to live healthy lives.

#### THEME 1. 1 TRANSPORT NETWORK

We are a City that is connected to places through an integrated, efficient and people friendly transport network for motorists, cyclists and pedestrians.



#### THEME 1. 2 HEALTH & WELLBEING



We build capacity for people to be active, healthy and connected, and provide inclusive and safe environments for all.

#### THEME 1. 3 SERVICES & FACILITIES

We provide convenient access to a diverse range of information, services, activities and facilities for our community.



## GOAL 2

### SUSTAINABLE CITY

We sustain and improve our natural and built environments for today's and future generations.

#### THEME 2. 1 CLIMATE CHANGE MITIGATION & RESILIENCE

We limit our impact on the climate, and are prepared and adaptable to the impacts of climate change.



#### THEME 2. 2 SUSTAINABLE RESOURCES



We conserve resources through efficient practices, investment in technology, waste avoidance, and a commitment to reuse, recycle and repurpose.

#### THEME 2. 3 NATURAL ENVIRONMENT

We protect and enhance the environment and its biodiversity across natural landscapes, waterways, open spaces and across our suburbs.



## GOAL 3

### DYNAMIC & PROSPEROUS PLACES

We have a strong and competitive economy that supports our unique and vibrant places and culture.

#### THEME 3. 1 PLACEMAKING

We have a spatial vision that guides the development of integrated, active and vibrant precincts that support diverse land uses and housing choice.



#### THEME 3. 2 CITY VIBRANCY



We are a City well recognised for our social and cultural diversity, creativity, arts, events, heritage, natural environment, educational and medical facilities.

#### THEME 3. 3 PARTNERSHIPS

We partner with neighbouring Councils, Government, universities, the private sector, not-for-profit organisations and community groups to maximise community and economic outcomes.



## GOAL 4

### EXCELLENCE IN LEADERSHIP

We are a professional and innovative Council with responsible leadership that is valued by its people, community and partners.

#### THEME 4. 1 GOOD GOVERNANCE

We are transparent and accountable, make informed decisions, demonstrate integrity and empower our community to have a voice and participate in a meaningful way.



#### THEME 4. 2 ORGANISATIONAL IMPROVEMENT



We are efficient and effective with a culture of positive change and innovation to deliver sustainable outcomes and value-for-money services that meet community needs.

#### THEME 4. 3 COMMUNITY EXPERIENCE

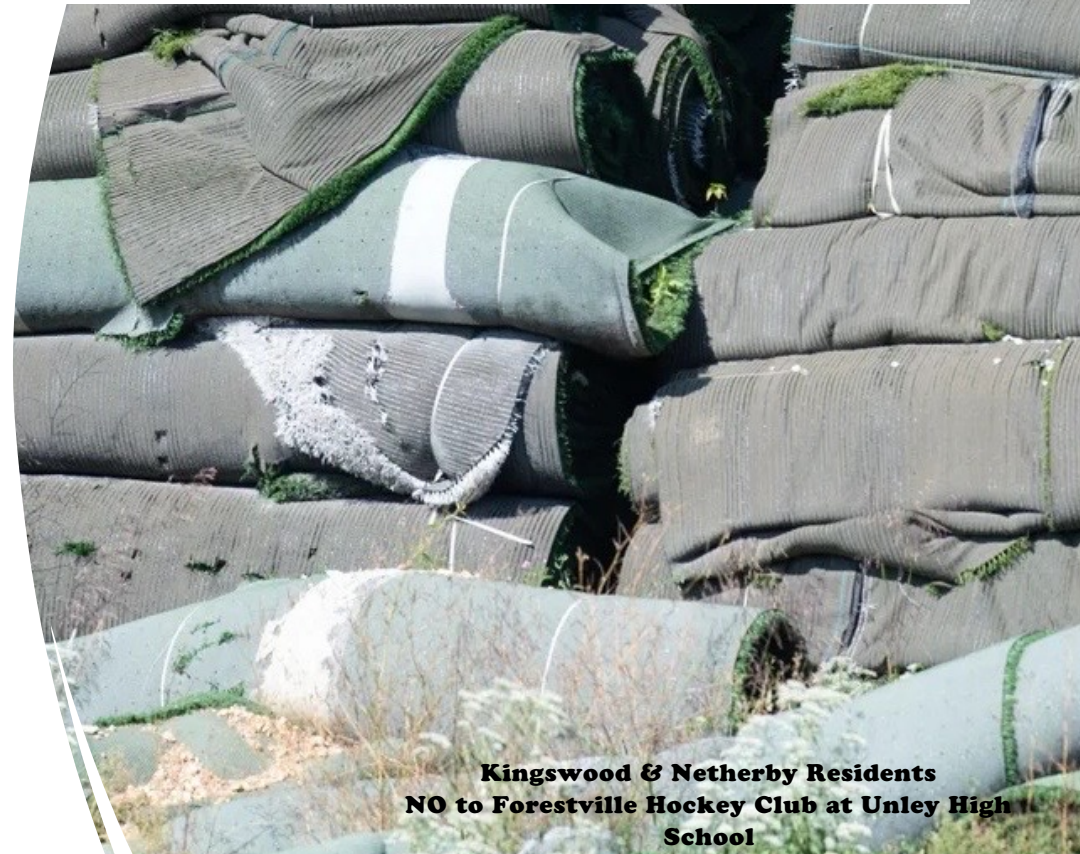
We are easy to do business with and commit to a customer-centric approach that delivers positive experiences and builds trust.



# Plastic Turf Risks

- ... rubber infill and turf fibre blades from synthetic turf fields are found in waterways in NSW. Expert advice to the Review estimated that a synthetic turf field without structures to reduce infill loss will wash tens to hundreds of kilograms of infill per year into stormwater systems or waterways<sup>1</sup>.
- We know that ~500kg/yr of micro-plastics will be released into stormwater<sup>2</sup> from 6,000m<sup>2</sup> pit. Pollution of Urrbrae Wetlands then Brownhill Creek, Patawalonga and Gulf St Vincent is inevitable.
- Banned by many local governments in Australia (& elsewhere); also EU moratorium<sup>3</sup>.

*Attitudes to synthetic turf are changing rapidly... driven by new research*



**Kingswood & Netherby Residents  
NO to Forestville Hockey Club at Unley High School**



Private & Confidential – 18 July 23

# Plastic Turf Risks

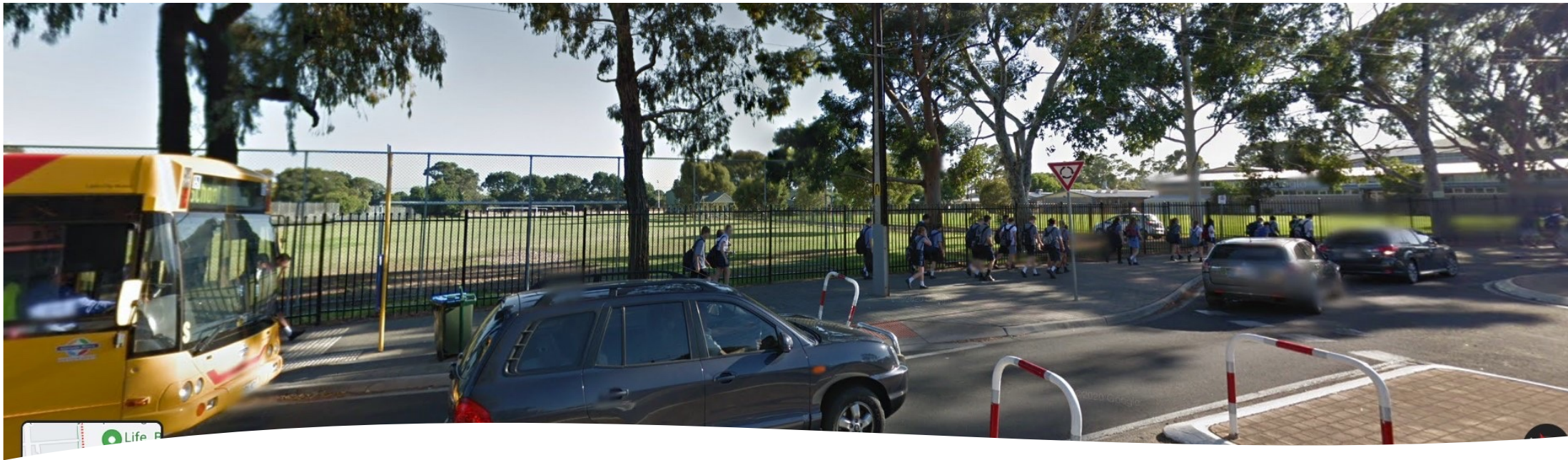
- Pollution risk from herbicide, fungicides (plastic turf needs weed control too)
- Urban heat island effect is created
- There is no environmentally friendly synthetic surface. Bamboo/sugar cane feedstock is 'green-washing'
- Currently no recycling options for plastic turf<sup>4</sup>.
- Playing noise disrupts peaceful enjoyment in homes along western boundary (yelling, whistles, calls etc..) less than 20m from edge of homes & back yards!
- Heavy day-night use leads to relentless light pollution from night competition grade games, carnivals, interstate fixtures, etc ..

**Kingswood & Netherby Residents  
NO to Forestville Hockey Club at Unley High  
School**



Private & Confidential – 18 July 23

**Kingswood & Netherby Residents  
NO to Forestville Hockey Club at Unley High  
School**



## Traffic and Parking

- Road trauma in and around schools is a major concern – ***this idea makes it worse***
- Marryatville High - a life-changing road trauma 22 Mar 2023 — One student fighting for their life, and another is seriously injured after they were hit while crossing at pedestrian lights.
- Unley High **grew 37%** in 2 years - 1260 students in 2021 to 1731 in 2023 (adding YEAR 7)
- Unley 'Sport for All' – 3 courts with containing 66 people is 132 (peak) into 111 car parking spaces – doesn't work well now

***secondary narrow roads can't cope with the volume***

- Visitor parking tight on school grounds – people walking ~360m to the car (versus <100m to the street!)

# Council \$140,000

Conditions have not been met...

- a) Appropriate engagement with the local school community and local residents;
  - Web-based consultation biased and inappropriate.
- b) Selecting an environmentally friendly artificial pitch
  - Environmental credentials are an oxymoron. It is not possible. There is no environmentally friendly artificial pitch yet.
- c) FHC being granted access to UHS's onsite car parking
  - This condition is may have been met in theory but does not provide a solution. In practical terms it will not solve the problem...  
...and leaves the Council with a major issue.

**Kingswood & Netherby Residents  
NO to Forestville Hockey Club at Unley High  
School**



Private & Confidential – 18 July 23

## Future issues to consider

1. Parking and traffic
2. Stormwater
3. Funding of replacement pitch
4. Community relationships
5. Council costs in managing issues

**Kingswood & Netherby Residents  
NO to Forestville Hockey Club at Unley High  
School**



# Under what circumstances will Residents approve FHC moving to Unley High School?

1. Retain natural grass.
2. Keep open community access to the green space.
3. No ongoing liquor licence for the stadium on school grounds.
4. Move stadium entry point access to be off Cross Road and/or Fullarton Road – i.e. away from residential streets to minimise people-vehicle interaction in the Kingswood-Netherby area.
5. Create enough in-school parking so it's more convenient than nearby street parking.
6. Ensure responsible fiscal control measures to avoid liability in the event of financial bailout (i.e. by State Government).
7. Implement environmental measures (noise + light) to ensure all existing residential properties are no worse off.

## THEME 2. 1 CLIMATE CHANGE MITIGATION & RESILIENCE

We limit our impact on the climate, and are prepared and adaptable to the impacts of climate change.



## THEME 4. 1 GOOD GOVERNANCE

We are transparent and accountable, make informed decisions, demonstrate integrity and empower our community to have a voice and participate in a meaningful way.



## THEME 2. 2 SUSTAINABLE RESOURCES



We conserve resources through efficient practices, investment in technology, waste avoidance, and a commitment to reuse, recycle and repurpose.

## THEME 2. 3 NATURAL ENVIRONMENT

We protect and enhance the environment and its biodiversity across natural landscapes, waterways, open spaces and across our suburbs.



## THEME 3. 3 PARTNERSHIPS

We partner with neighbouring Councils, Government, universities, the private sector, not-for-profit organisations and community groups to maximise community and economic outcomes.



## THEME 1. 2 HEALTH & WELLBEING

We build capacity for people to be active, healthy and connected, and provide inclusive and safe environments for all.



## THEME 4. 3 COMMUNITY EXPERIENCE

We are easy to do business with and commit to a customer-centric approach that delivers positive experiences and builds trust.



**Kingswood & Netherby Residents  
NO to Forestville Hockey Club at Unley High  
School**



Thank you for hearing our concerns and  
considering the long-term implications of this proposal

Private & Confidential – 18 July 23

**Kingswood & Netherby Residents  
NO to Forestville Hockey Club at Unley High  
School**