

# T2D - Catalyst for Change

Place Shaping /  
Shaped by Place

18/07/2023

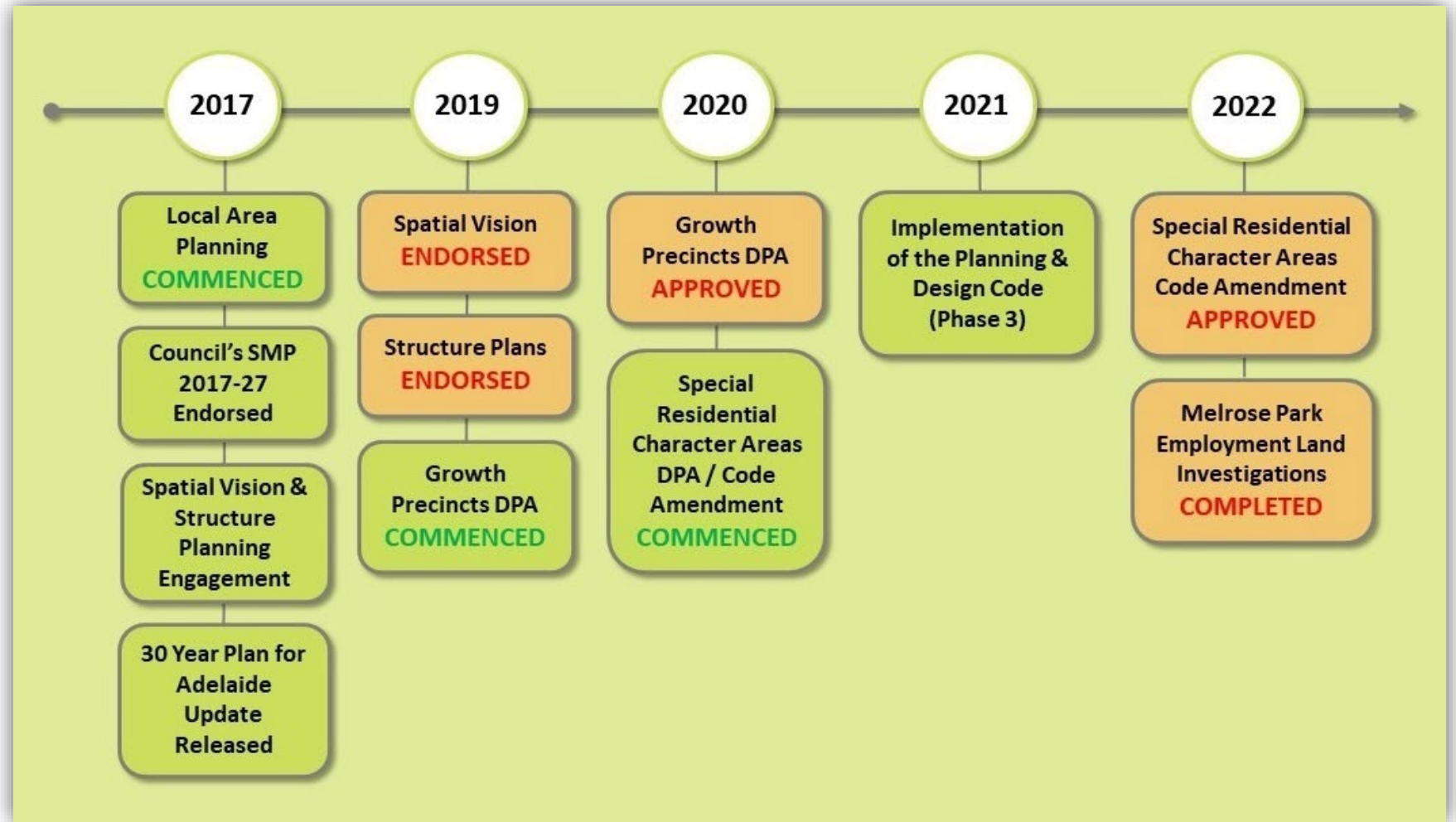


# Context

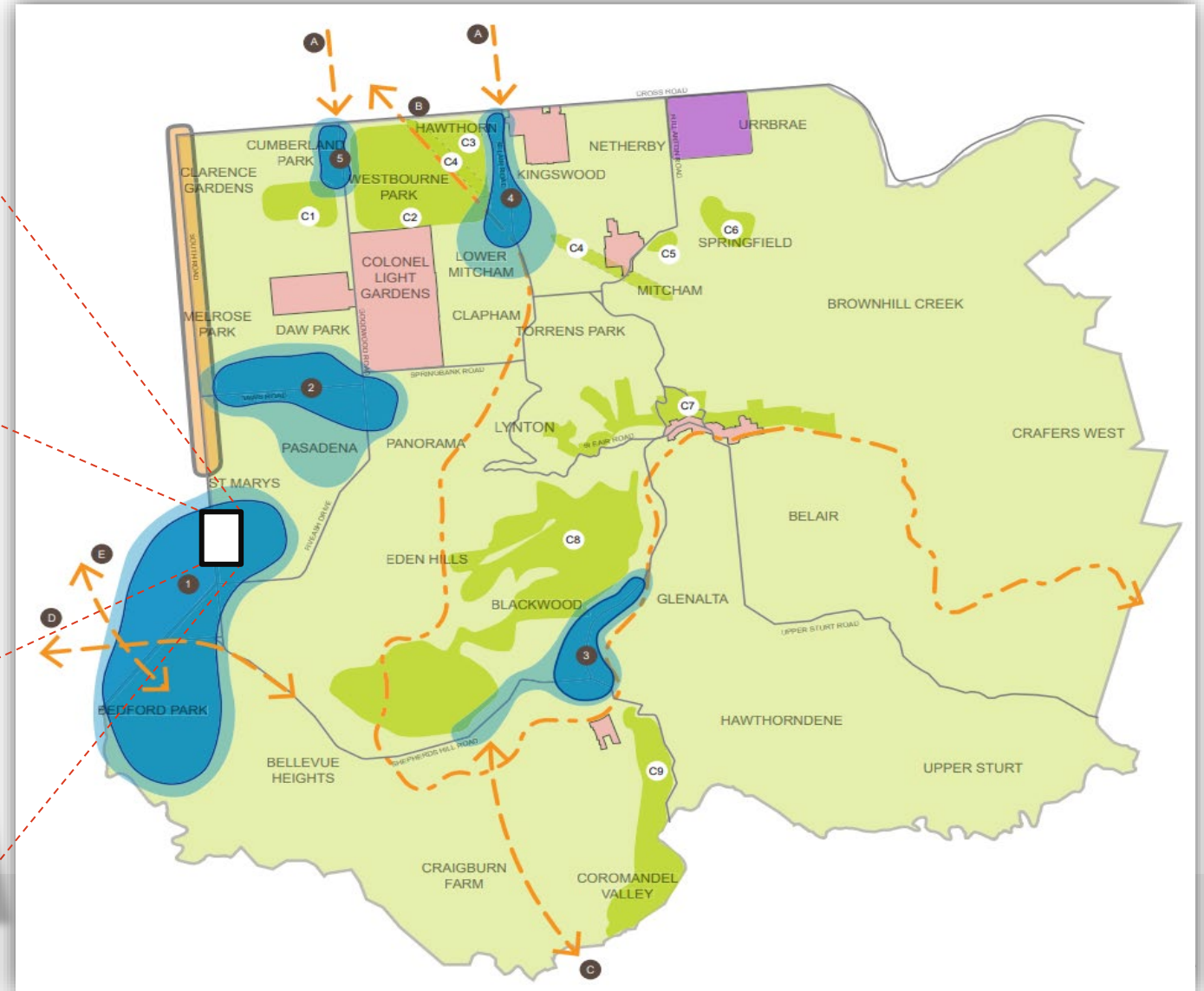
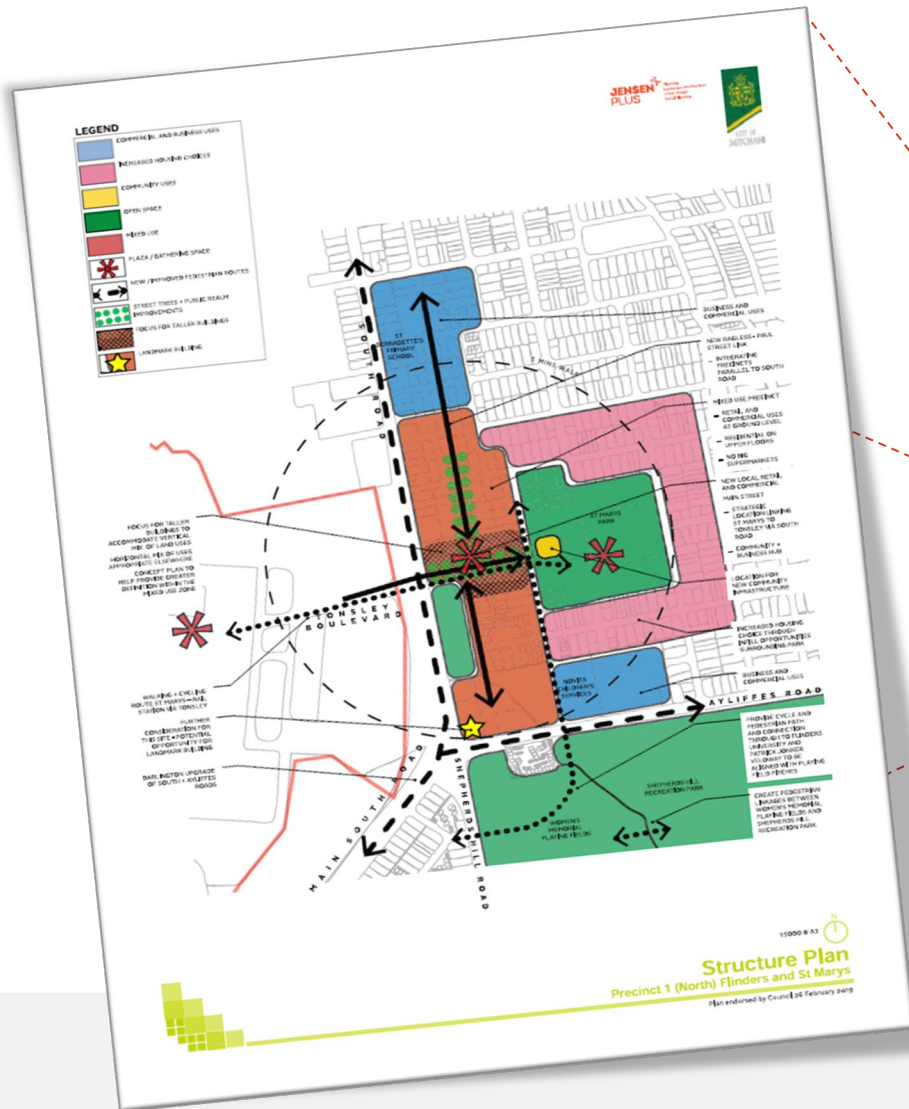
---

- Three projects (pre-works / motorway / surface road)
- Tonight's focus is the surface road
- Longest timeline of the three & ongoing
- Prepare for future funding opportunities (2024-25 onwards)
- Six 'strategic focus areas' identified. One is now underway
- Not seeking to prioritise at this time
- Do you agree? Have we missed any show-stoppers?

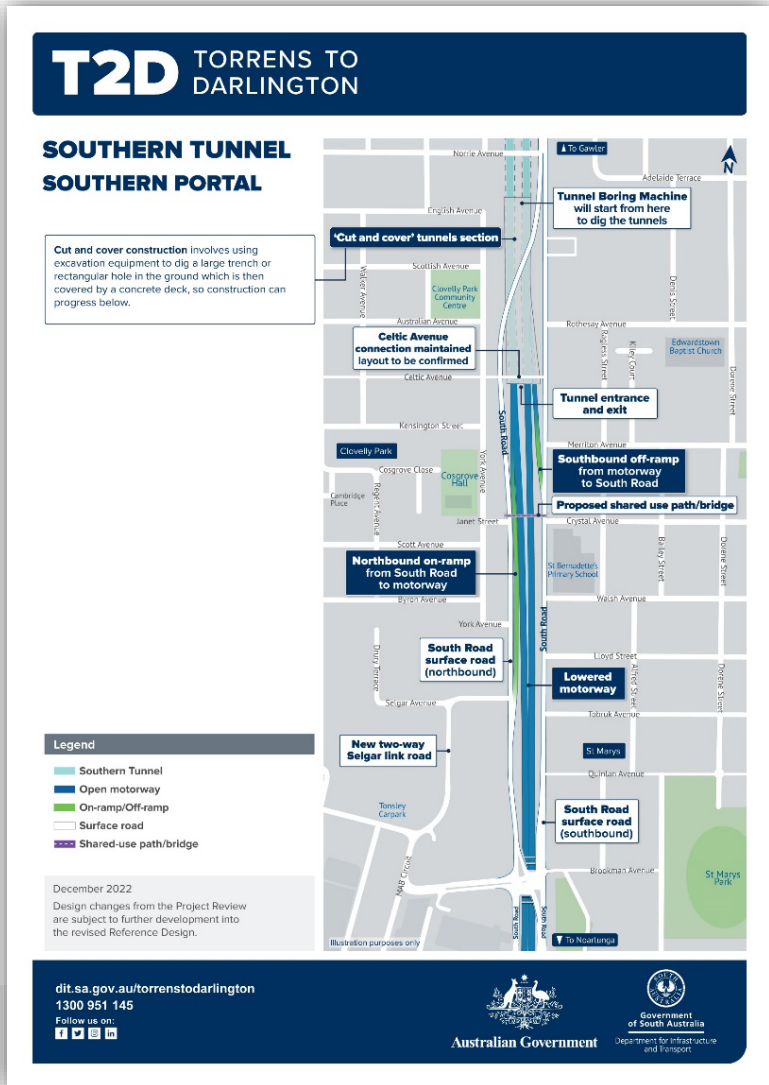
# Local Area Planning



# Spatial Vision & Structure Planning



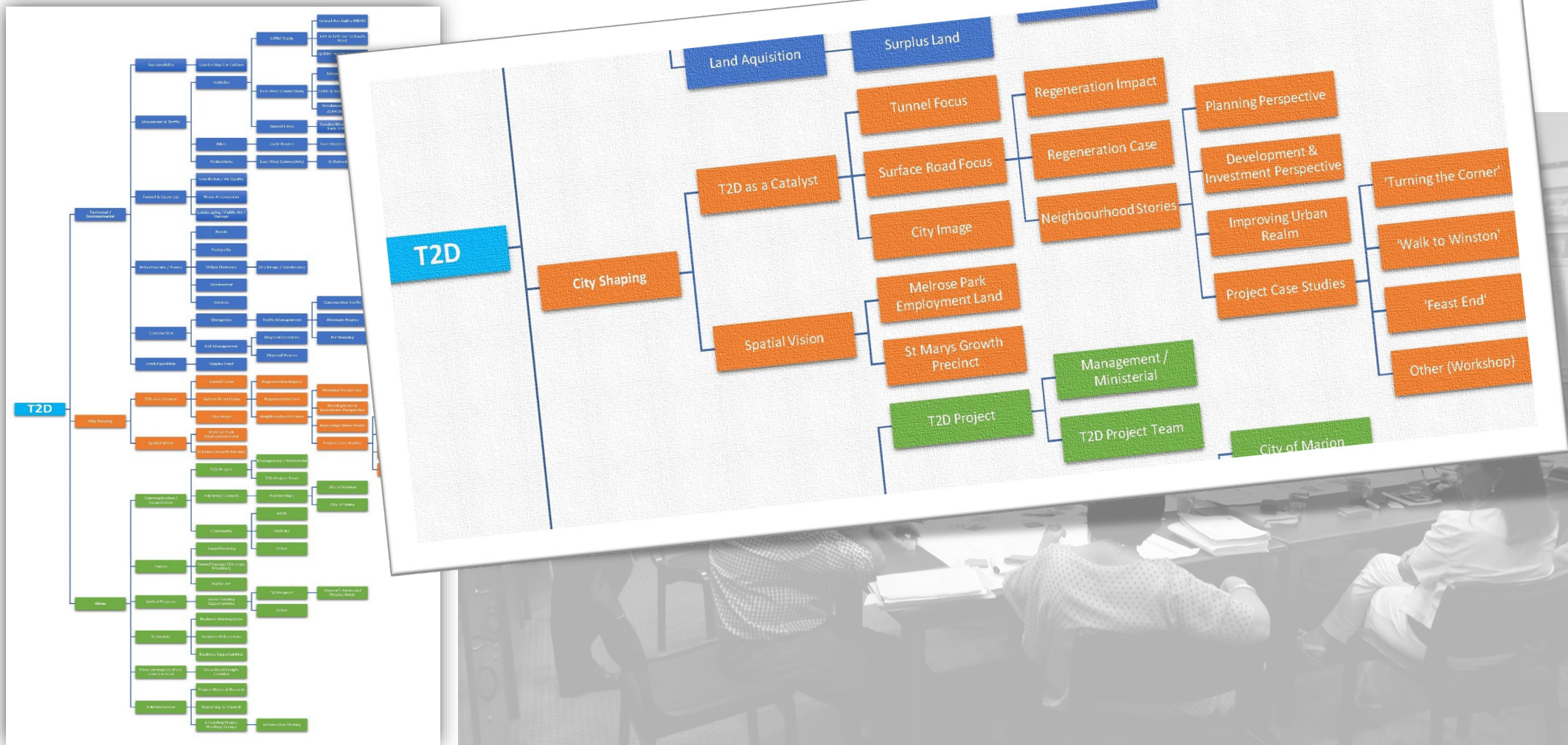
# T2D Concept Design – Dec. 2022



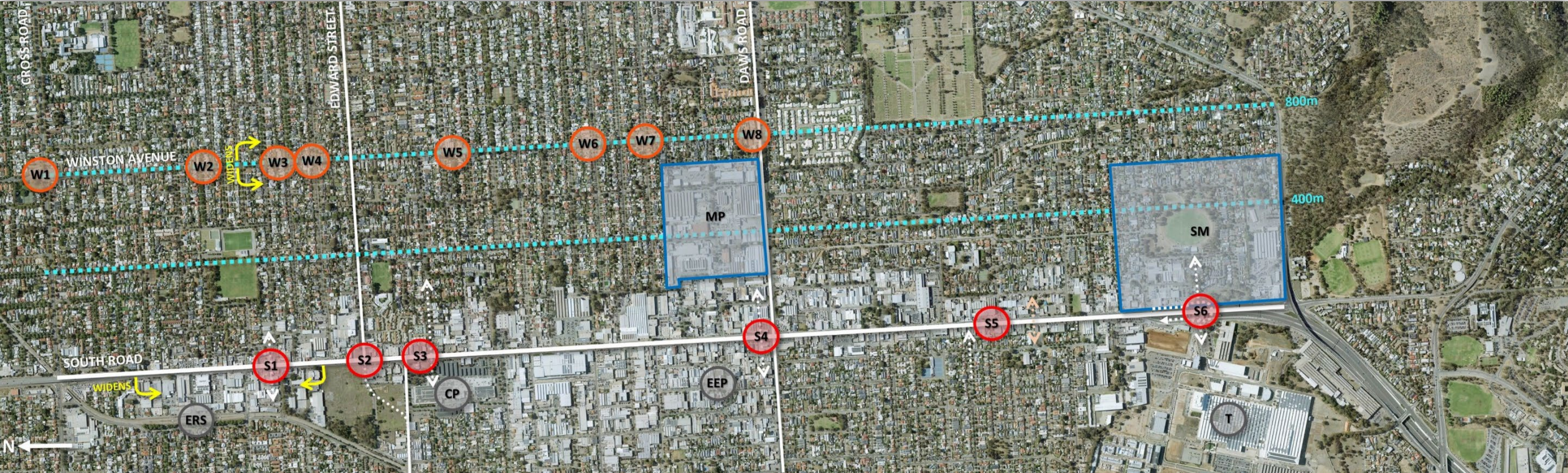
- **Tunnel Portal moved approximately 300m further north**
- More distance and time to change lanes
- Shared use bridge adjacent to Crystal Avenue
- Retain Celtic Avenue signalised intersection



# T2D Project Analysis



# T2D Urban Context Analysis



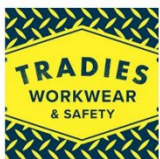
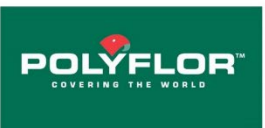
S1

# Urban Village

Edwardstown (North) & Clarence Gardens



EDWARDSTOWN





S1

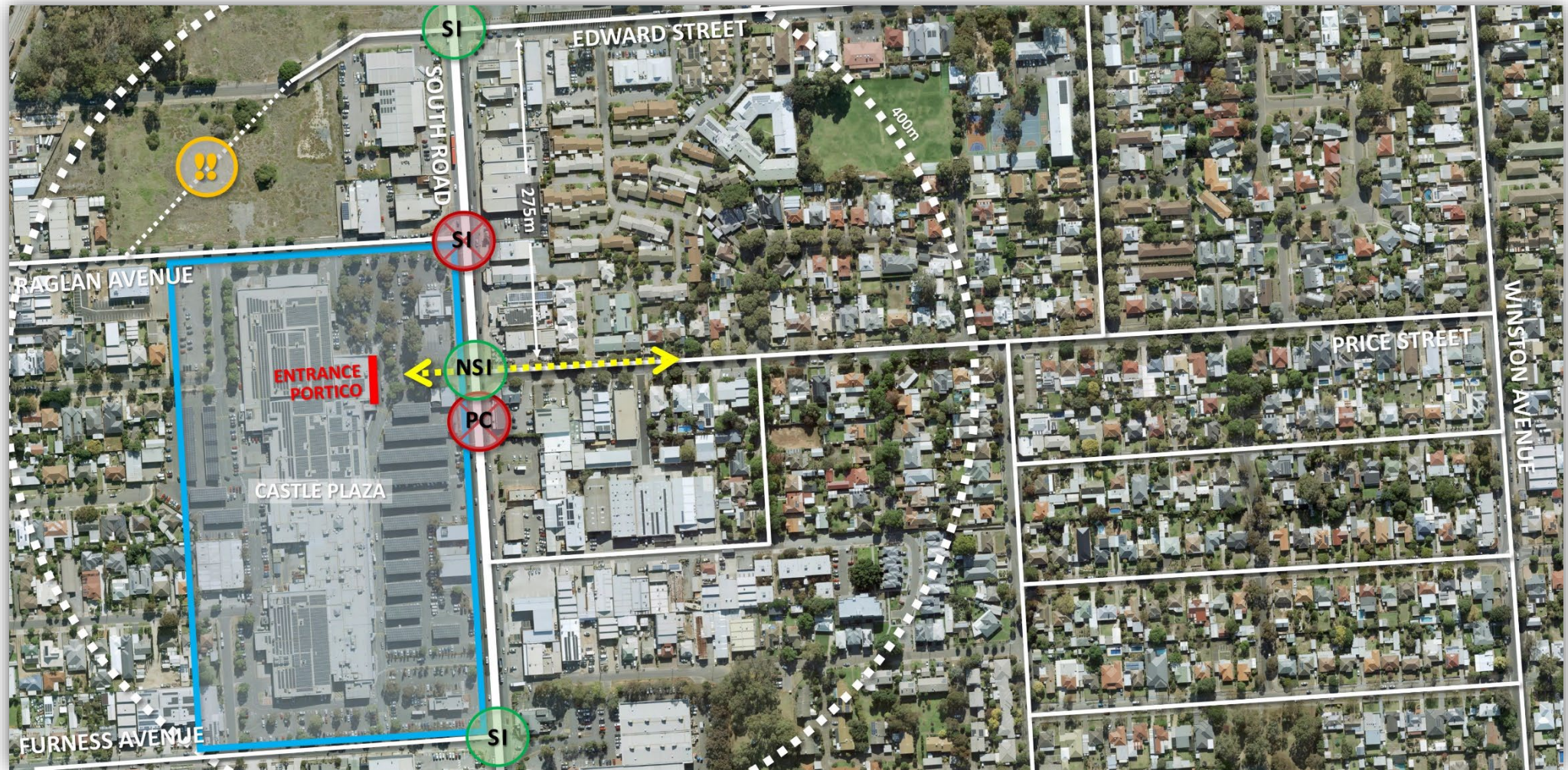
# Urban Village

Edwardstown (North) & Clarence Gardens



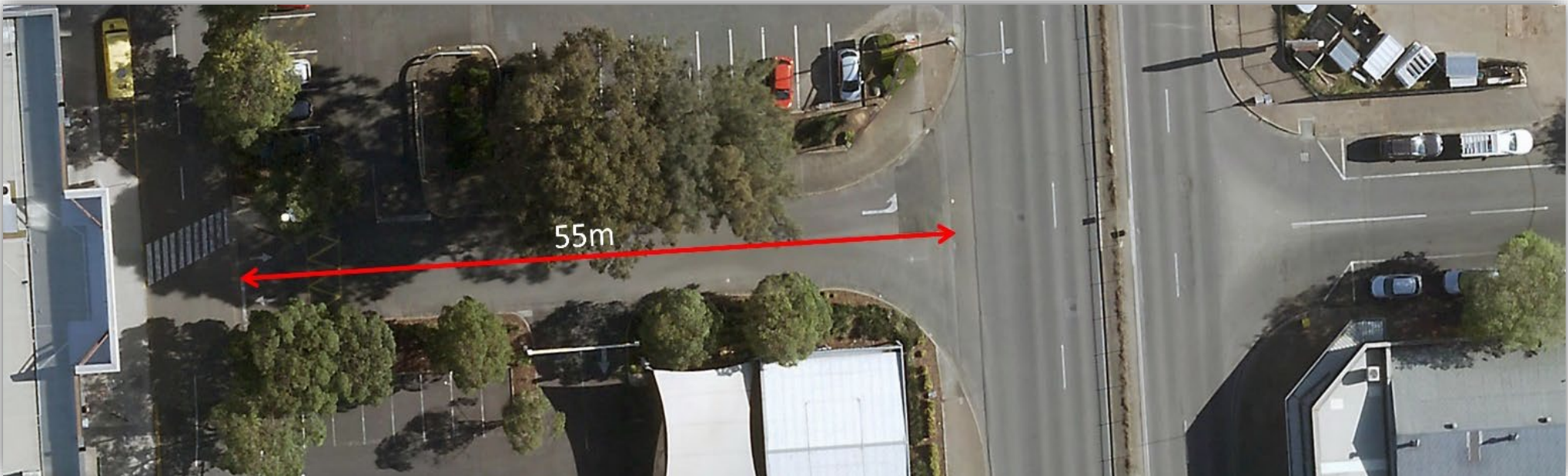
# Improving Connections

Edward Street to Raglan Avenue & Price Street to Castle Plaza



# Improving Connections

Price Street to Castle Plaza



# Strategic Employment Land

Melrose Park and Edwardstown



## Edwardstown

we're making it!

**City of Marion**

Revitalisation of the Edwardstown Employment Precinct - Project

**Edwardstown**

**Project Background**

The Edwardstown Employment Precinct is the economic engine room of the City of Marion economy. It is home to over 4,500 jobs, over 1,800 businesses and provides \$100 million for economy.

**Project Objectives:**

- Enhance vibrancy and livability of the area for local people
- Facilitate local commercial activity and business development
- Reinvigorate the profile of the City as a business and motor destination
- Improve visual and aesthetic appeal of the local environment
- Present increasing employment opportunities for all local residents
- Provide environmental responsibility through low carbon buildings and sustainable business practices
- Provide environmental and social benefits through encouraging local jobs for local people and reusing precinct on transport infrastructure
- Generate financial benefit and return to the City by community projects and enhancement of services
- Support economic recovery
- Improve access to complementary goods and services

The 2001-2020 20-year urban plan set commenced in July 2021.

**Highlights include:**

- Growth of Edwardstown Part One to about 17% has been completed
- Established the business recovery strategy steering committee
- Business auditing and rebuying program delivered
- First local market of businesses to redevelop through to provide energy efficiency
- Economic Activation Plan
- Tenancy and Employment Value Proposition and Capacity mapping
- Creating the Edwardstown Brand
- Stimulating businesses to services in the area
- Growth of Edwardstown Part Two to about 10% has been completed
- Stable jobs of 10,000

For more information please visit the website about the project James Gordon-Davies@kateva.com

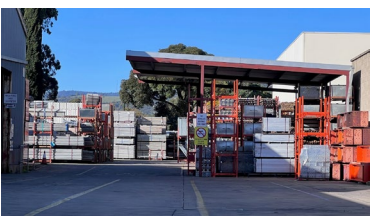
Frank of Edwardstown    Restore Business Premises  
Doing Business in Edwardstown



Melrose Park Employment Land Study

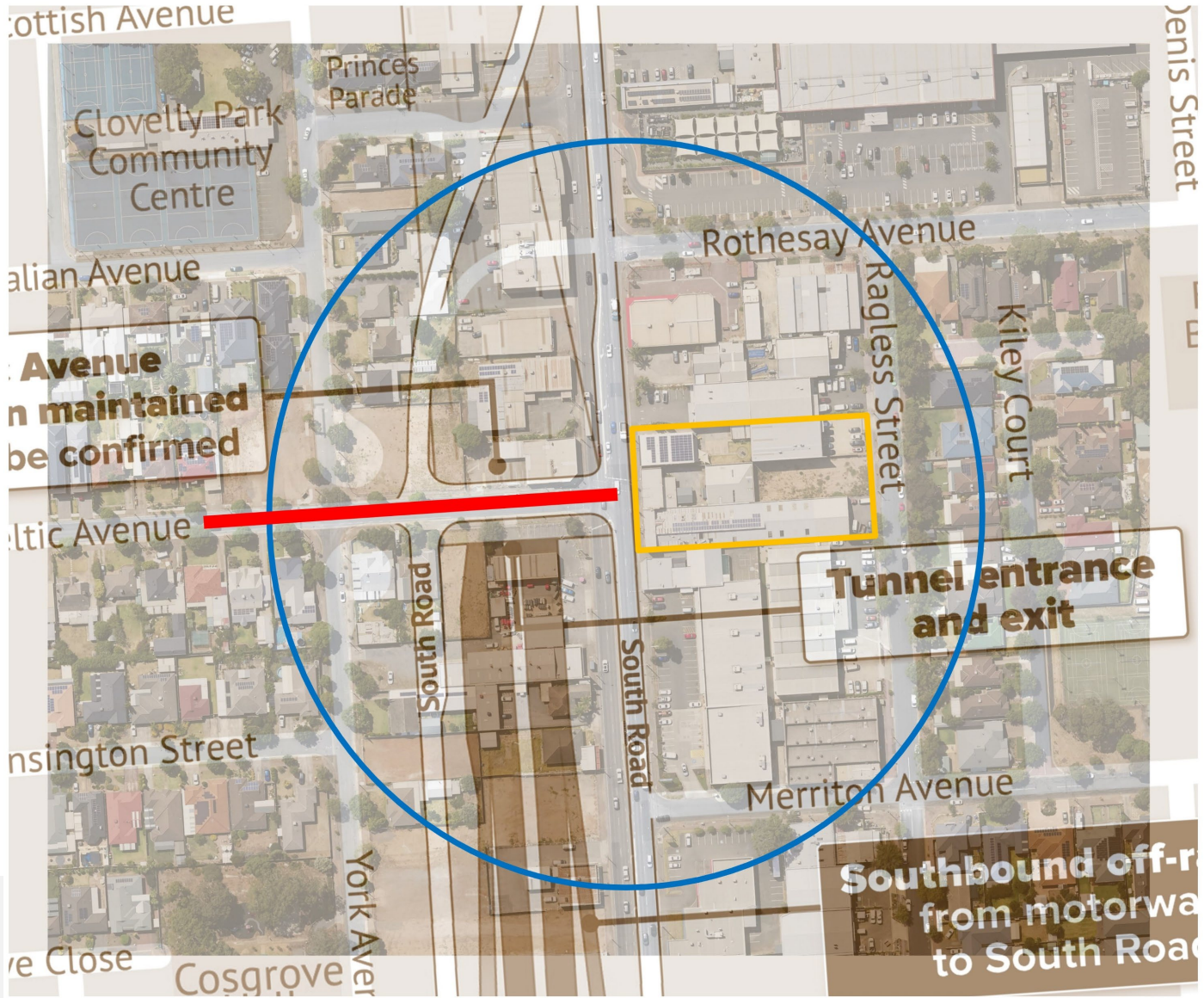
City of Mitcham  
10 | 09 | 2021

SGS & Planning



# Improving Connections

St Marys to Clovelly Park



# Growth Area - St Marys

Central Spine – Brookman Avenue (opposite Tonsley Boulevard)



# Growth Area - St Marys

Central Spine – Brookman Avenue (opposite Tonsley Boulevard)



FLINDERS MEDICAL CENTRE

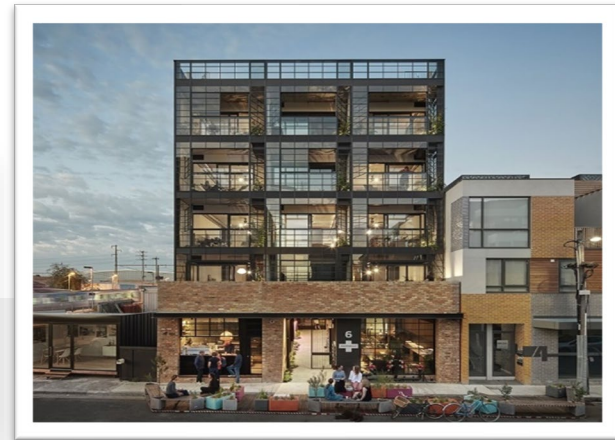
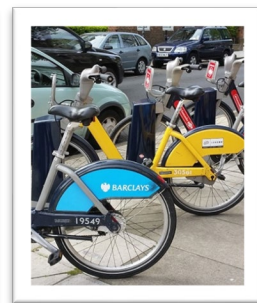
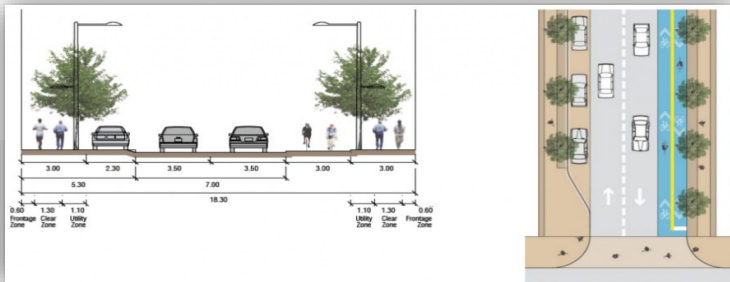
Repat Health Precinct



Tonsley Village.

PASADENA SHOPPING

T2D TORRENS TO DARLINGTON



Government of South Australia  
Department for Child Protection



# Winston Avenue

Streetscape & Activation







# Winston Avenue

Streetscape & Activation

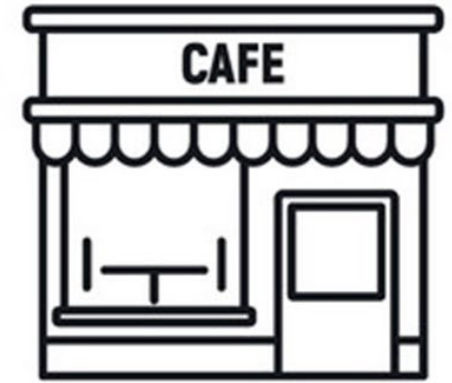




# Winston Avenue

Streetscape & Activation (Public Realm & Branding Opportunities)

\*photos courtesy of Jensen PLUS



## Walk to Winston

# Final Thoughts

- Step-change for communities and businesses
- Opportunity to help our most vulnerable
- Connections, accessibility and partnerships
- Short, medium and long term goals
- Extent of Council's role yet to be determined

# Key Takeaways

---

- Early stages 4+ year horizon
- Edwards and Raglan east/west connection will proceed
- St Mary's growth precinct back on agenda
- S3 to S5 - Priority to be determined by Council
- Funding opportunities
  - \$120M City Shaping funding (understand a 50/50 contribution split)
  - Places for People Grants (Open Space Fund)
  - Some uncertainty about funding availability, how it is to be apportioned and for what.....
- Potential need for council funding for concept development
- Tripartite with DIT and City of Marion
- Cant leave Winston Avenue out of the conversation
- Next Steps – Council Report



**CITY OF MITCHAM**