

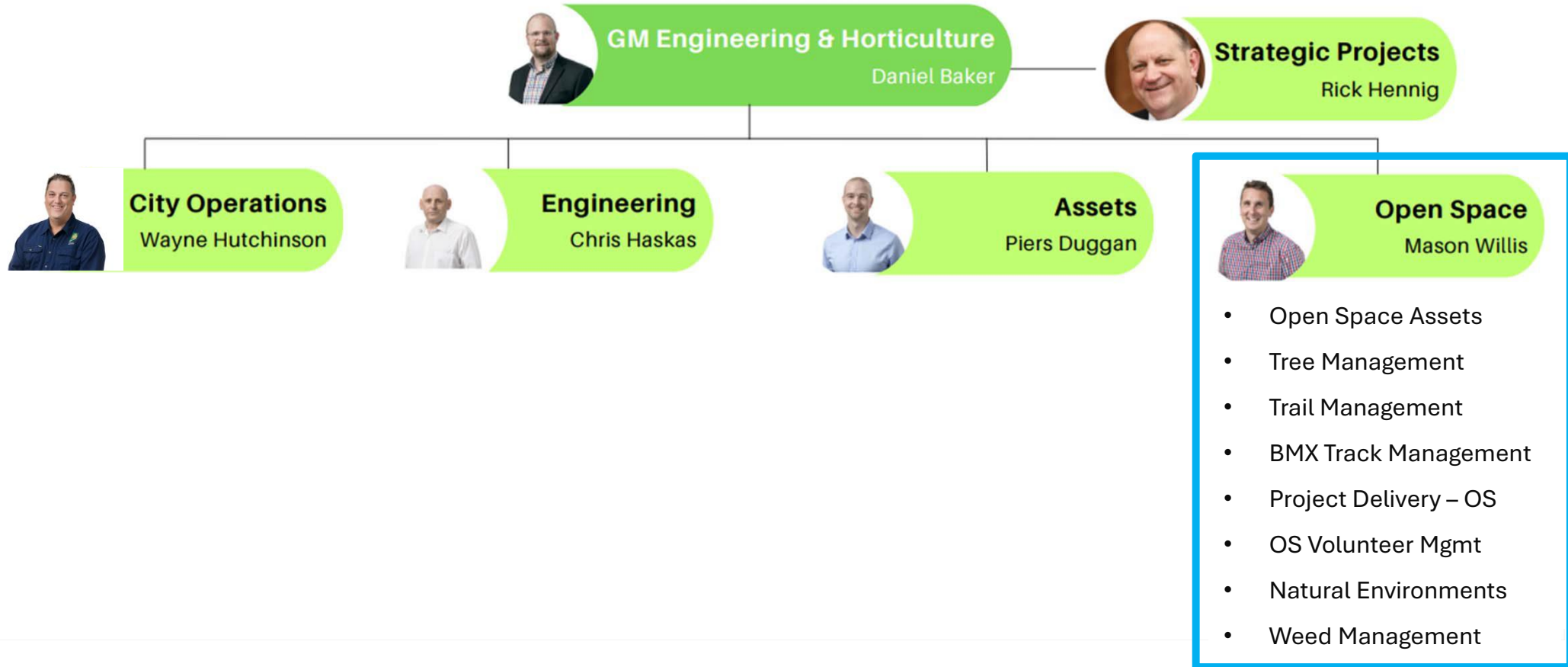
# Open Space Team

**Mason Willis** – Manager Open Space

3 October 2023

# Engineering & Horticulture

## ENGINEERING & HORTICULTURE



Susan –  
Coordinator Open Space  
Volunteers



Jacob –  
Natural Resources  
Officer



Tim – Open Space  
Asset Officer

Simone Harvey -  
Project Manager  
Open Space



Justin -  
Trails Officer



David – Horticultural  
Officer



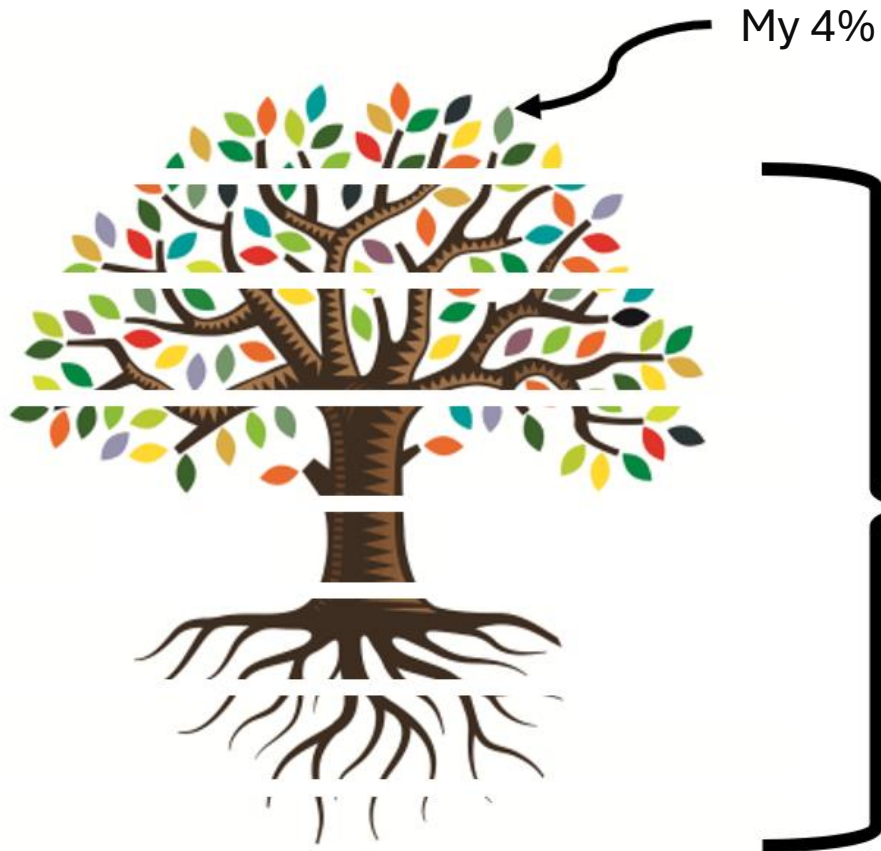
New Open Space  
Volunteer Coordinator



Mason – Manager  
Open Space

Chris – Senior Arborist





My 4%

75 years  
experience at City  
of Mitcham!

OPEX:  
\$2.6m  
CAPEX:  
\$3m

8.2 FTE

# Our Open Spaces

## RESERVES & OVALS



**945**  
HECTARES OF OPEN  
SPACE

**84**  
DEVELOPED PARKS &  
RESERVES

**12**  
SPORTING OVALS

**5**  
NATIONAL PARKS

**1,800**  
TREES PLANTED  
ANNUALLY

**55,000+**  
STREET TREES

**75,000+**  
TREES IN TOTAL



**\$36million**

TOTAL OPEN SPACE  
ASSET VALUE

# Open Space Asset Management and Delivery

## 65 asset types



17  
BBQ



153  
PICNIC  
SETTINGS



45  
SHELTERS



4  
FITNESS  
STATIONS



63  
PLAYGROUNDS



1  
DOG PARK



29  
COURTS



14  
COURTS

# Trail Management



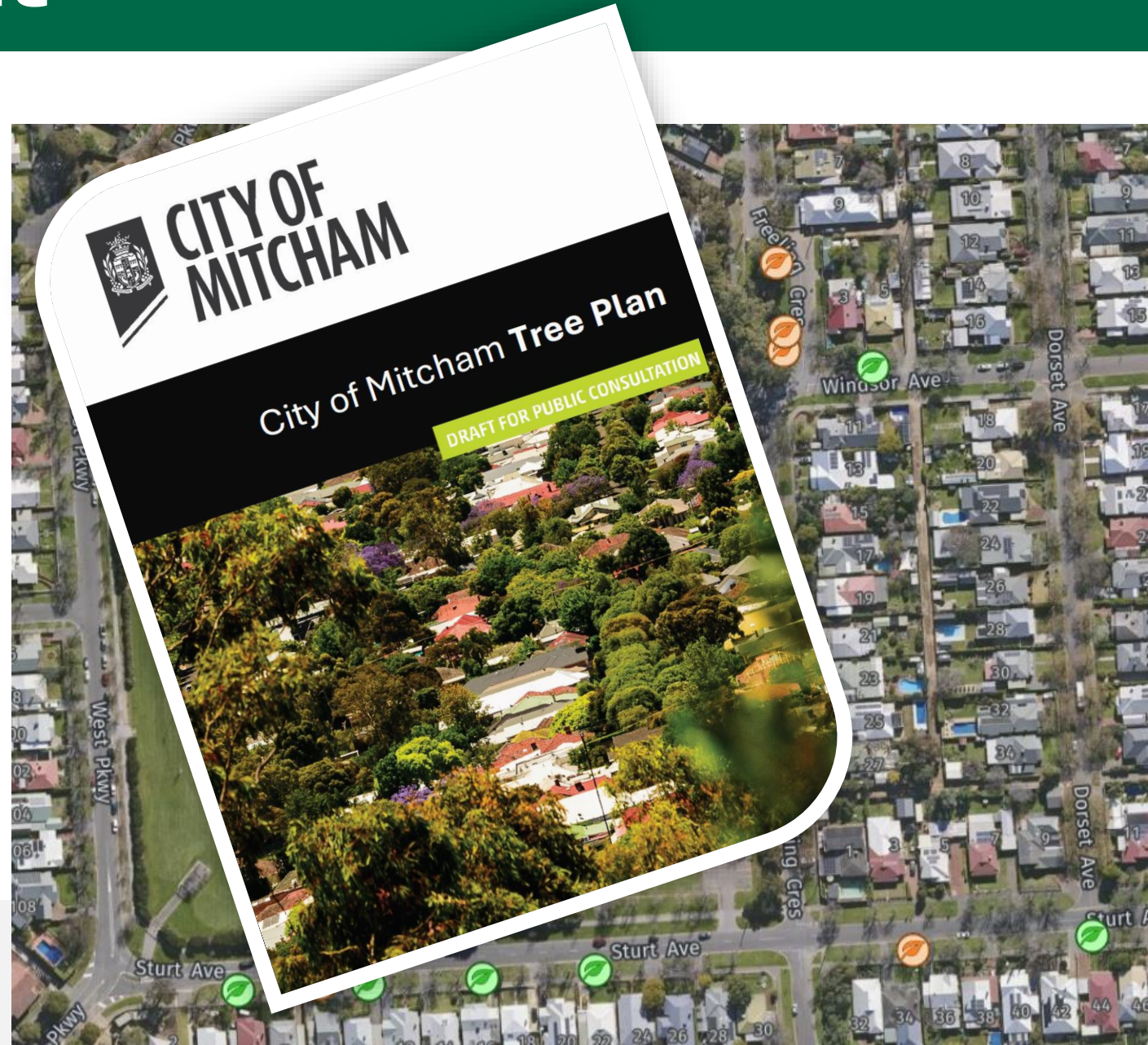
# Tree Management



- Tree risk Management
- Auditing
- Council Tree Reports



- Tree Planting program
- Tree Plan
- Tree establishment





# Open Space Volunteer Management



- Over 100 volunteers
- Bush for Life and TFL
- Community Groups



City of Mitcham

15 Sep · 🌐

Where are your favourite hidden places in Mitcham? One not-so-secret gem is Gamble Cottage, a historic home and garden at Blackwood maintained b... See more



# Natural



**2022/23:**

- **184** hectares control
- **18** hectares creation



# Recent Highlights



# Current Focus

Election and

- CC Hood
- Revitali
- Rozell

- Tree P
- Tree A
- Native
- OS AME

1 | Draft Masterplan Report

## Draft Masterplan: Stage 1 Works

- 1 Improved & widened main entry
- 2 New entry planting
- 3 Existing bitumen loop path retained with new linemarking / distance markers
- 4 New central tree avenues (deciduous shade trees) with permeable paving & lighting. Opportunity to explore locating path between existing trees, subject to further design investigations.
- 5 Central pavilion with picnic tables, BBQ's & garden beds
- 6 New nature playground (Stage 1)
- 7 Potential future playground expansion
- 8 Junior pump track / small wheel bike loop
- 9 New small dog park.
- 10 Existing big dog park resurfaced with mulch / sand / small synthetic turf mounds / agility equipment / permeable loop path
- 11 Open lawn / kick about area with small scale soccer and football goals, new terrace seating (potential for 'pop up' movie screen for community events)
- 12 Family picnic area & new shade trees
- 13 New native understorey planting (possible future volunteering site)
- 14 Existing raingarden revegetated (possible future volunteering site)
- 15 Native biodiversity bush garden with informal paths (possible future volunteering site)
- 16 Creek remediation - weeds removed & revegetated
- 17 Informal path
- 18 Viewing deck & terraced gabion walls
- 19 Stepping stone crossings & natureplay nodes
- 20 Upgraded boardwalk crossing
- 21 Dry creek to connect creek, northern portion of reserve, dog park & playspace (possible future volunteering site)
- 22 New picnic tables
- 23 New bench seating
- 24 Primary vehicle / service access path
- 25 Secondary vehicle / service access path
- 26 Half court basketball and bouldering blocks integrated into existing fitness area
- 27 New raingarden to improve stormwater management (possible future volunteering site)
- 28 Potential future opportunity: terraced steps to provide link to new bridge and park
- 29 Potential future opportunity: new bridge to cross over the creek
- 30 Potential future opportunity: fitness equipment relocated next to existing playground with new shade trees

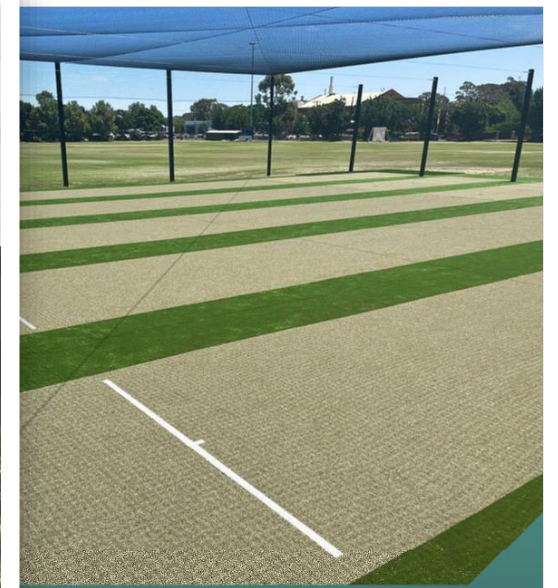
### LEGEND

Existing trees	Avenue trees (deciduous)
Understorey planting	Proposed shelter
Existing shelter	Unit paving (permeable)
Existing loop path	Irrigated lawn
Major sealed path	Sensory / bush garden
Internal unsealed path	Entry planting
Proposed trees	Pinechip softfall
	Proposed Stage 1 Works

0m 10m 30m 50m



by JF  
2212  
Mast  
26.0  
Draft



Supported by



**GRASSROOTS  
CRICKET  
FUND**

**ALIAN CRICKET  
STRUCTURE FUND**  
Guidelines

# Key Future Priorities

- Renewal program
- Tree Planting and Management
- Tree Policy
- Volunteer coordination



