

ENVIRONMENTAL SERVICES AND COMMUNITY SAFETY

Presentation 15 June 2021

Presented by the City of Mitcham



CITY OF
MITCHAM

Environmental Services and Community Safety

Areas of Responsibility:

- Community Safety – Bushfire Fire Protection Management, Dog and Cat Management, Parking Control and Local Nuisance and Litter Control and By-Law Compliance.
- Environmental Health Services – Immunisation Services, Food Safety, Environmental Health Control, Vertebrae Pest Control
- Officers can be authorised in up to 20 pieces of Legislation
- Eyes & Ears of Council
- FTE
 - Community Safety – 9.6 (including administration staff)
 - Environmental Health – 5.5



Environmental Services and Community Safety

Community Safety – Outline of Functions

What is Community Safety?

- *Maximising voluntary compliance through a higher level of education and awareness as well as enforcement.*
- *Our aim is to make our open space and public areas safer for our residents and visitors through patrols and a visible profile in the community.*

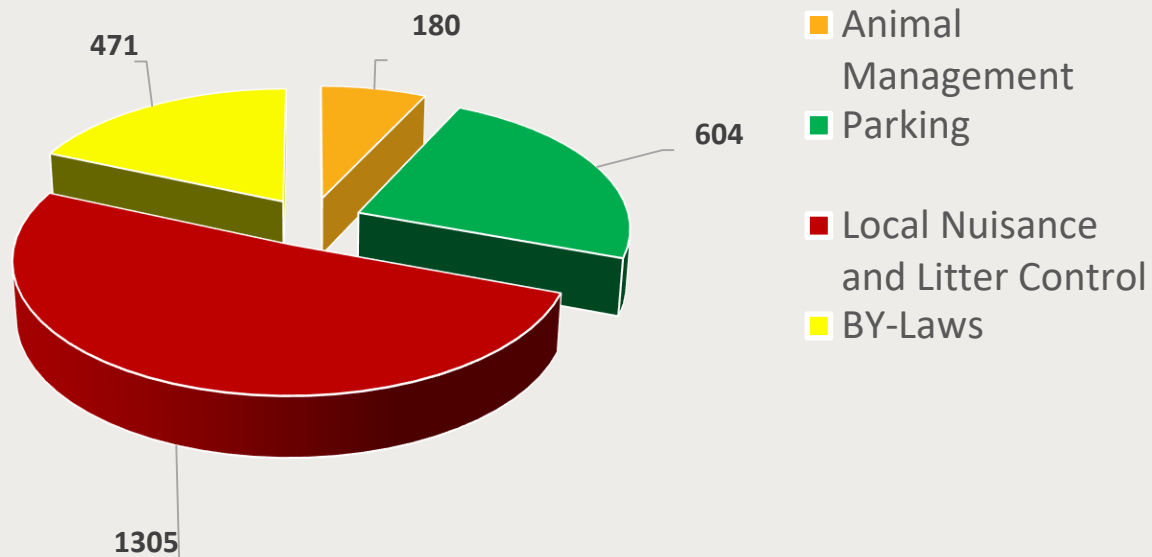


CITY OF
MITCHAM

Environmental Services and Community Safety

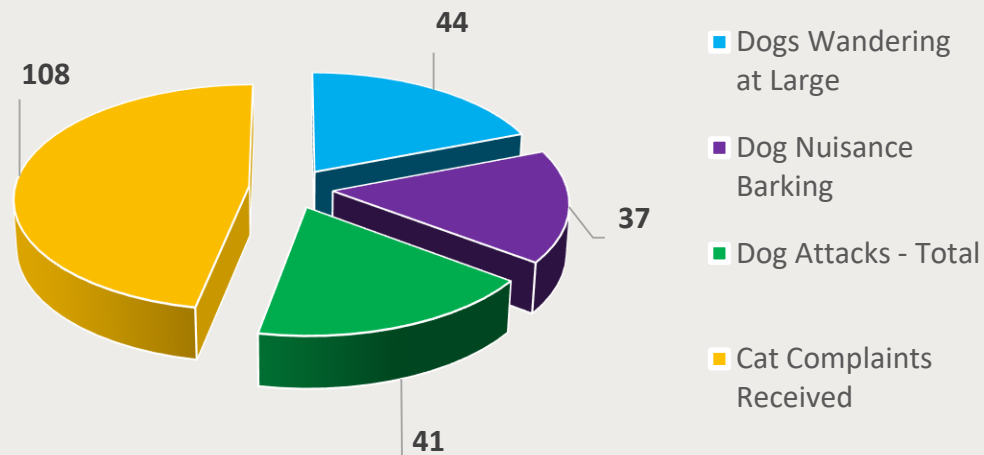
Community Safety – Where is our Time Spent

Customer Requests by Type



Environmental Services and Community Safety

Community Safety – Animal Management

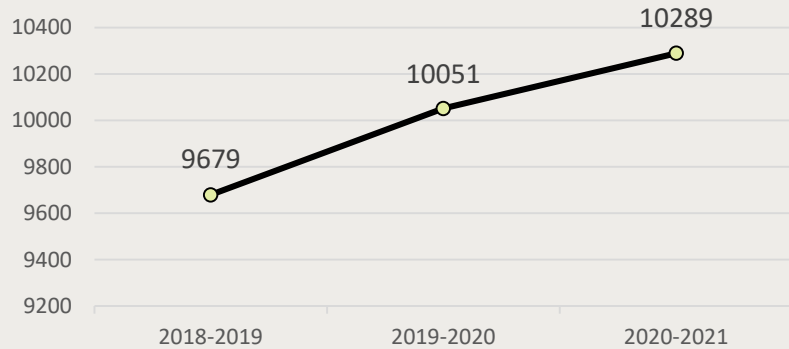


Environmental Services and Community Safety

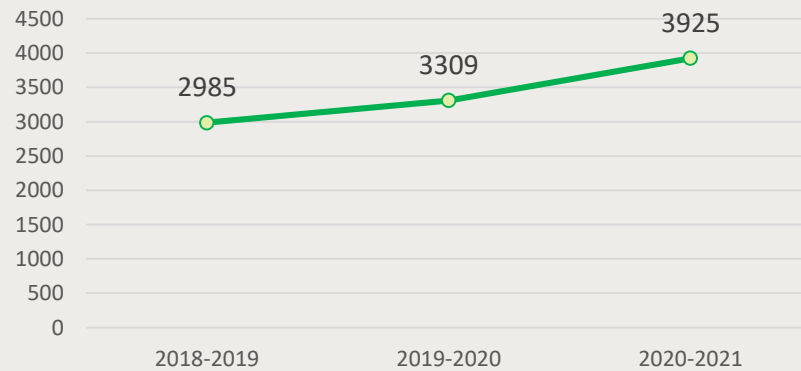
Community Safety – Animal Management

- Dog & Cat Registration Door Knock Program

Dogs



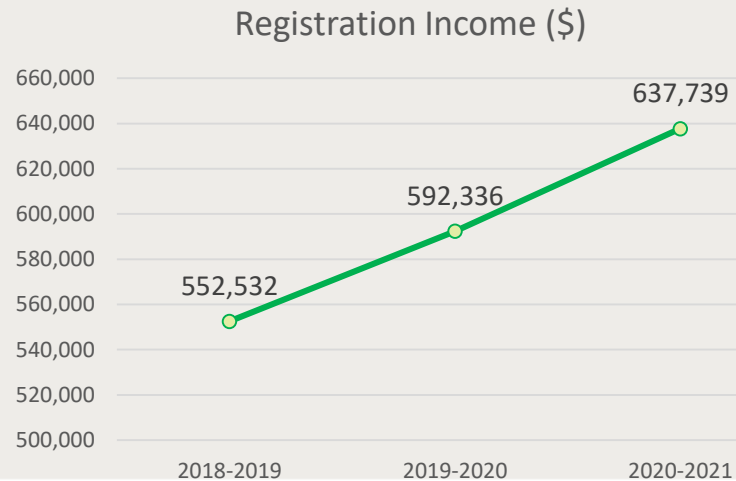
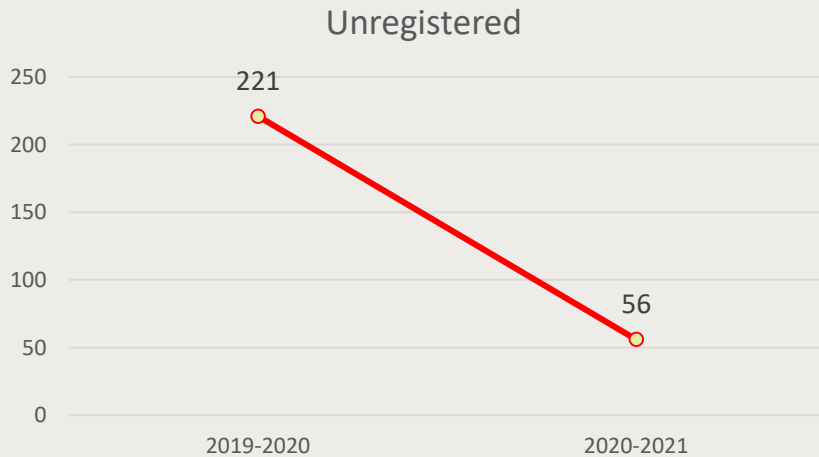
Cats



Environmental Services and Community Safety

Community Safety – Animal Management

- Dog & Cat Registration



Environmental Services and Community Safety

Community Safety – Animal Management

- Hannaford Reserve

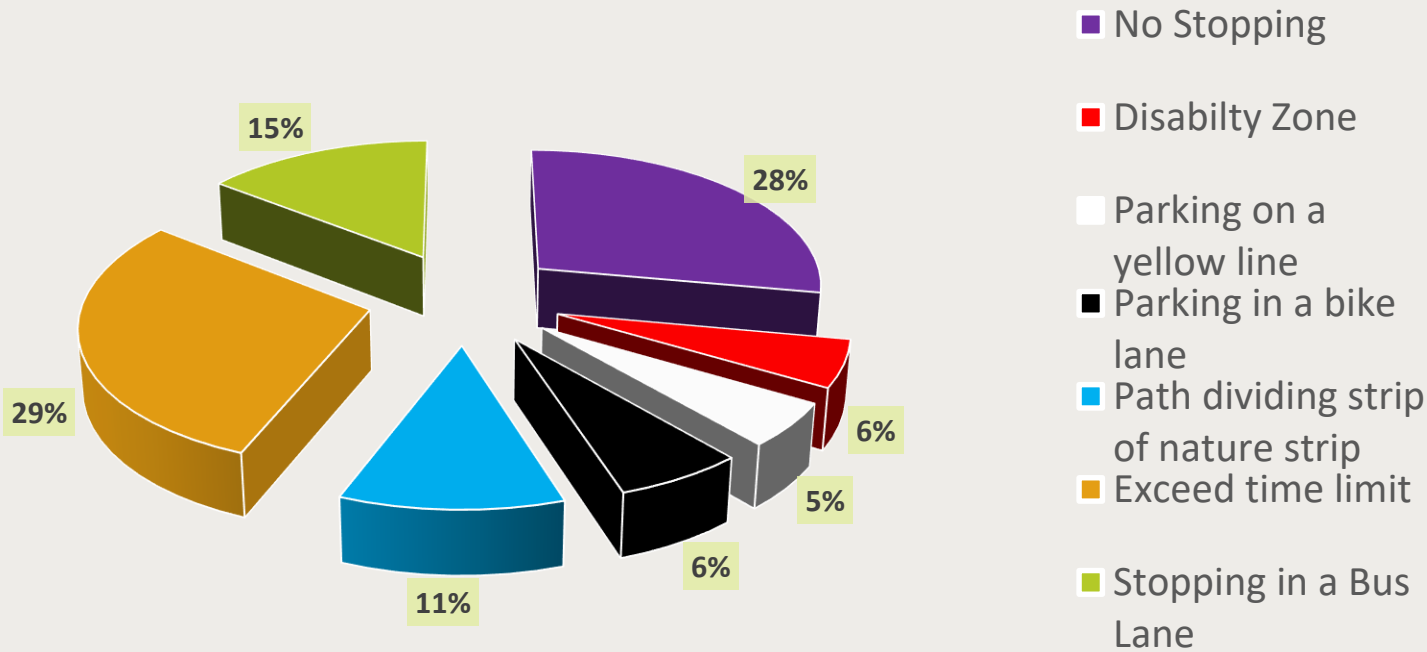


CITY OF
MITCHAM



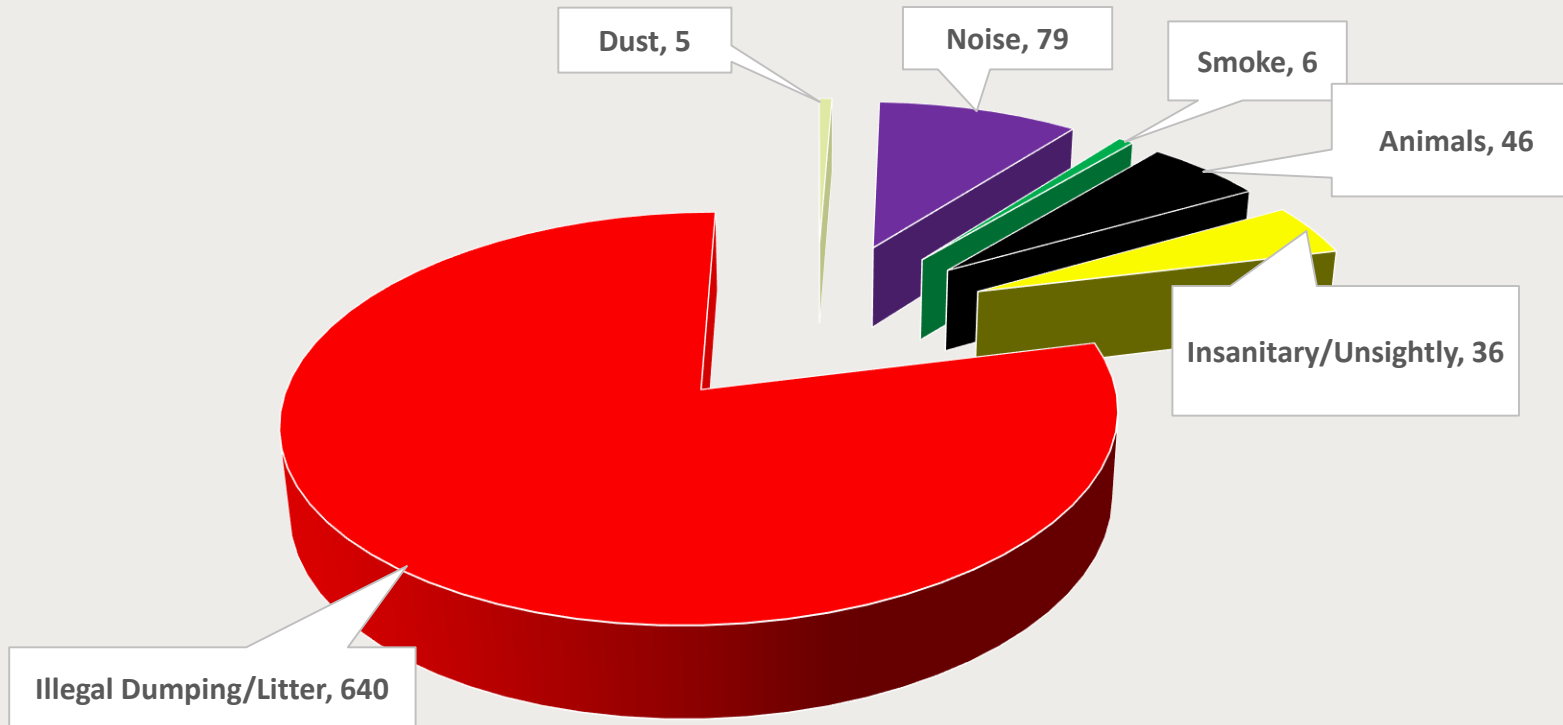
Environmental Services and Community Safety

Expiaiton Notices Issued by Offence - Parking



Environmental Services and Community Safety

Local Nuisance and Litter Complaints



Environmental Services and Community Safety



CITY OF
MITCHAM

Environmental Services and Community Safety



CITY OF
MITCHAM

Environmental Services and Community Safety



CITY OF
MITCHAM

Environmental Services and Community Safety

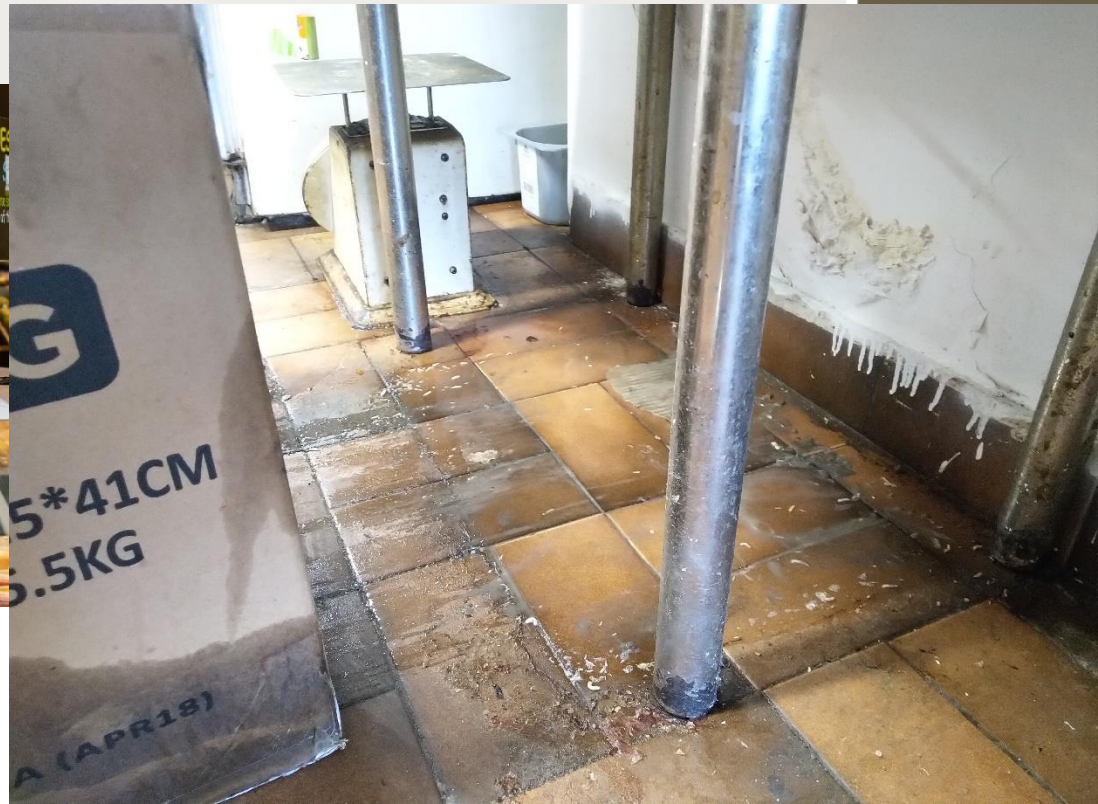


CITY OF
MITCHAM

Environmental Services and Community Safety

Environmental Health Services

- 214 Routine Food Inspections this year
 - Backlog Cleared
 - Follow up inspections for non-compliance



Environmental Services and Community Safety

Environmental Health Services

- Food Safety Audits
 - Private hospitals, aged care facilities and child care centres
 - 3-7 hours to complete
 - 5 qualified auditors – 14 sites audited
- 22 Public Swimming Pools and Spas (water quality)
- 24 Cooling Towers (legionella control)
- 3 Tattoo Premises (infection control)
- Auditing of Supported Residential Facilities
- Living Well Public Health and Wellbeing Plan

Environmental Services and Community Safety

Environmental Health Services

- Forefront of Public Health response to COVID-19
 - Outbreak planning
 - Assist SA Health and SAPOL



Environmental Services and Community Safety

Environmental Health Services

- Wastewater Management in un-sewered areas
- Domestic Squalor/Insanitary Conditions



Environmental Services and Community Safety



Environmental Services and Community Safety

Immunisation

- Community and School Vaccine Programs
- 4024 vaccines administered to 2119 people
- 617 flu vaccinations



Summary of 2020/2021 FPO Statistics

- Information Letters Sent – 1400
- Properties Inspected – 2297
- Complaints – Private Land – 246
- Complaints – Council Land – 17
- Complaints – State Gov. Land - 12
- 105F Notices Issued - 218
- Expiations for Non Compliance - 20
- Properties Cleared by Council Contractor – 14



Environmental Services and Community Safety

Trends

- Higher Number of S105F Notices Issued compared to previous year – 11 more
- Higher Level of Compliance
 - 44% less Expiations issued for Non-Compliance
 - 50% less call for contractors to clean up on-complying properties
- Less Complaints of Council and Crown Land
 - More Strategic Works being undertaken on Public Land

Environmental Services and Community Safety

Bushfire Management



BUSHFIRE PREPAREDNESS

Before



After



CITY OF
MITCHAM

Environmental Services and Community Safety

Bushfire Management – Strategy

- Member of CFS Region One BMC
- 3 Year Bushfire Management Strategic Operational Plan, reviewed annually
- Partnerships with CFS Community Engagement Department
- Working with CFS – Learnings and Outcomes from:
 - Independent Review of SA 2019/2020 Bushfire Season
 - Royal Commission into National Natural Disaster Arrangements



Environmental Services and Community Safety

Challenges/Opportunities Going Forward

- COVID-19 Compliance Monitoring
- Local Nuisance & Litter Control – Demand
- Increase in SACAT Appeals
- More People wanting to Elect to be Prosecuted
- Community's Demand
- Community's Preparedness and Engagement toward Bushfire Management



Environmental Services and Community Safety

Environment and Sustainability

Green Adelaide

ADELAIDE NATIONAL PARK CITY

[Let's make Adelaide a National Park City - YouTube](#)



CITY OF
MITCHAM

Environmental Services and Community Safety

Comments or Questions?



CITY OF
MITCHAM